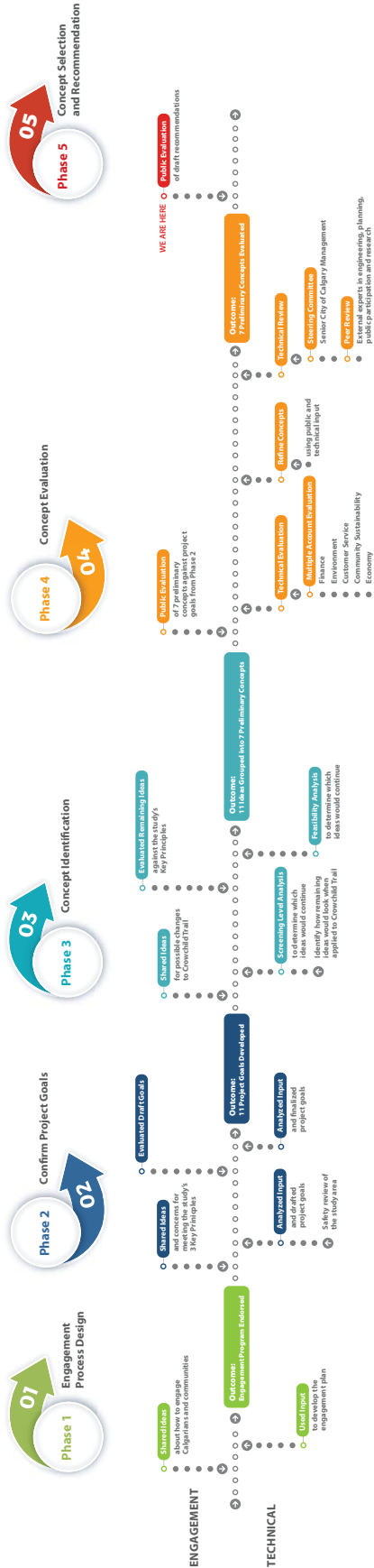
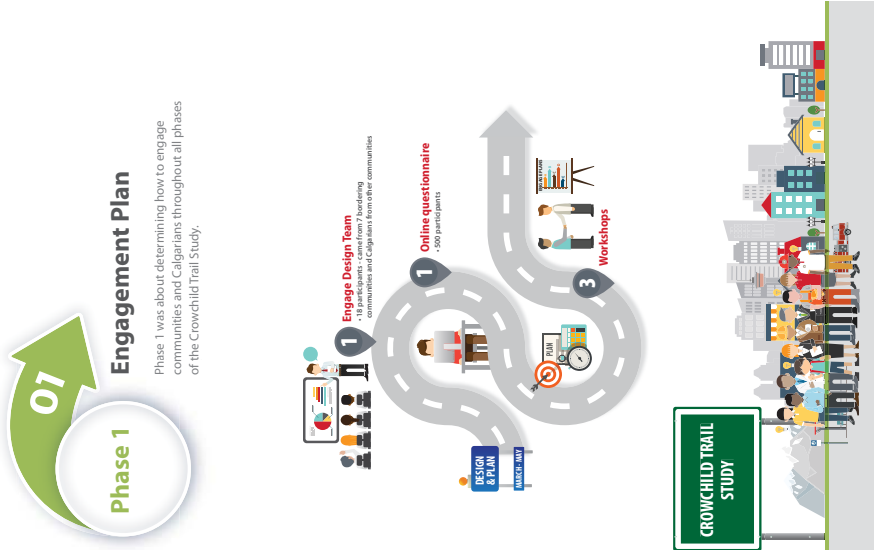




Concept Selection Process



PHASE 1 - Engagement Process



Crowchild Trail Study - Six-Phase Study Process Summary

We asked:

How do we have the most effective conversation possible about the Crowchild Trail Study?

What we heard:

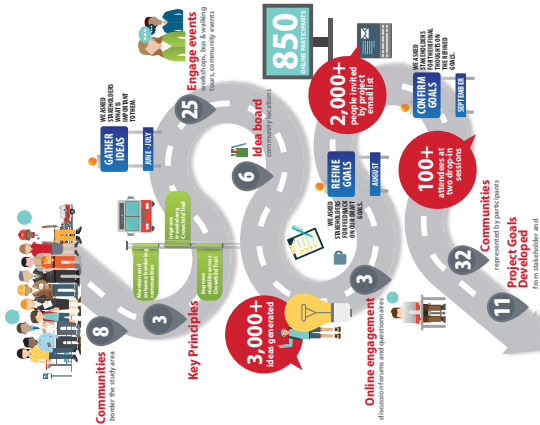
Engagement Tool	Response	Stakeholders told us they would like:
Online - provide comments	High	More information about the project
Online - interactive discussion	Medium-High	More information about the project
In-person session - with an agenda (e.g. workshop)	Medium	More information about the project
In-person session - drop-in	Medium-Low	More information about the project
Drop-in session - at a non-city event or festival	Low	More information about the project
Site walks or visits	Low	More information about the project
Other (please specify)	Low	More information about the project

Outcomes:

The Engagement Design Team developed the following 10 Guiding Principles to govern how engagement will be done on the Crowchild Trail Study:

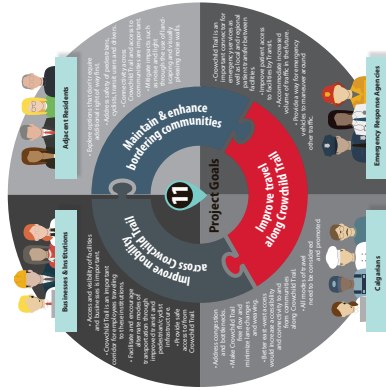
- Provide multiple entry points into the conversation
 - Engage at the focus of engagement based on the needs of the project
 - Be successful / flexible
 - Use the appropriate tools at appropriate times
 - Demonstrate transparency
 - Be responsive to stakeholders
 - Build trust and show accountability
 - Use plain language
 - Instill learning into the process
 - Follow an open, well-defined process
- The Engagement Plan includes:**
- Open house/drop-in sessions
 - Workshops
 - Pop-up events in the community
 - Walking tours
 - Bus tour
 - Online input tools
 - Door knockers
 - Community idea boards

PHASE 2 - Confirm Project Goals



We asked:
Participants to share their ideas to develop goals for the study

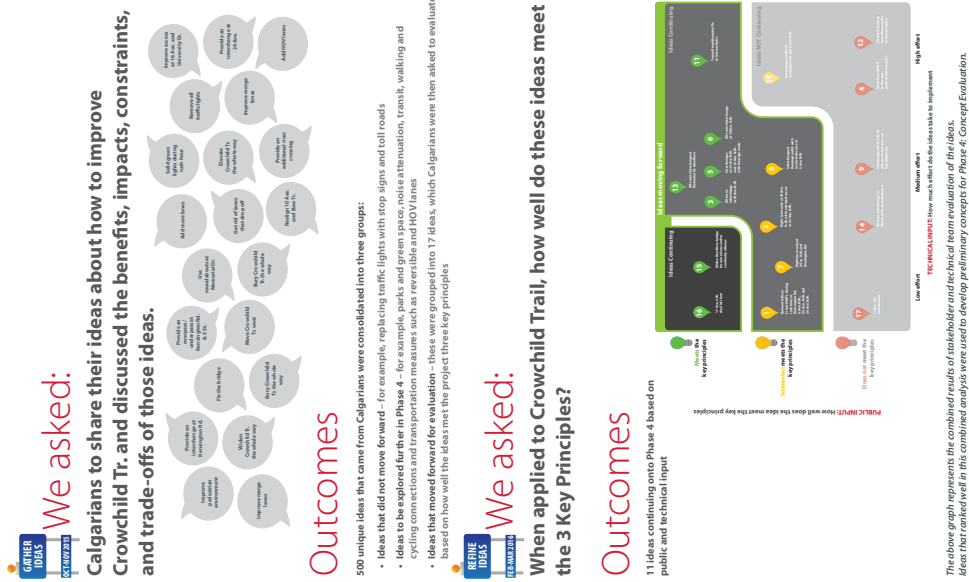
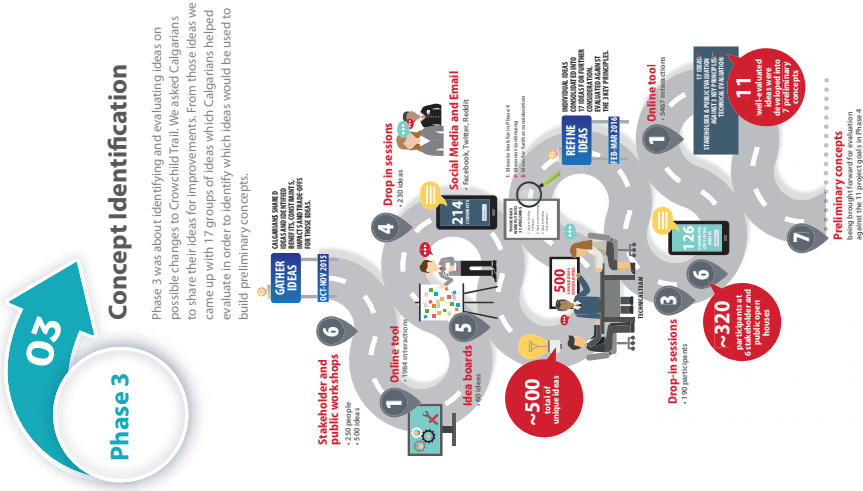
What we heard:



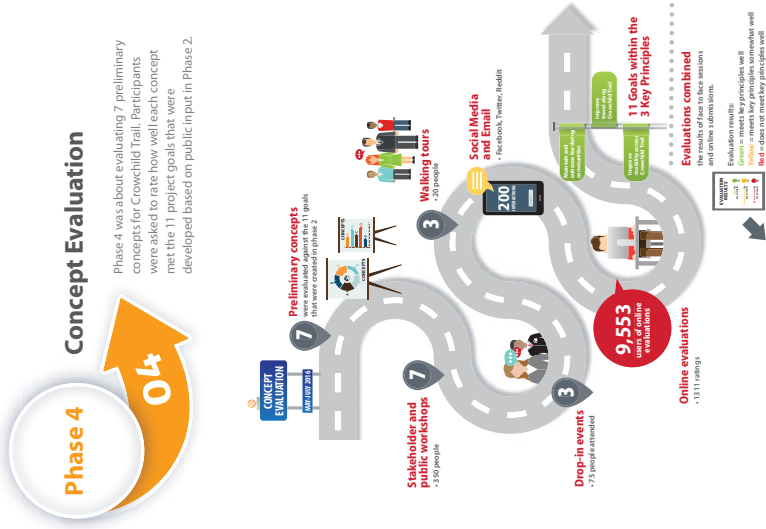
Outcomes:

- 11 Project Goals Developed**
- Key Principle #1: Maintain and Enhance Bordering Communities**
 - Prioritize concepts that fit within existing city-owned lands over concepts that require rezoning private property.
 - Address congestion and bottlenecks that affect traffic patterns and safety in bordering communities.
 - Recommend concrete and visually-pleasing ways to reduce traffic noise along Crowchild Trail.
 - Improve access to transit services and pathways along the Crowchild Trail corridor.
 - Key Principle #2: Improve Travel Along the Corridor**
 - Provide continuous pedestrian and cycling routes nearby, but not on, Crowchild Trail to connect major destinations along the corridor.
 - Address congestion and bottlenecks that affect frequency bus service along Crowchild Trail.
 - Enhance the Crowchild Trail corridor to better fulfill its role as a primary route for delivery of goods and services, and for connecting to major destinations.
 - Provide for more continuous traffic flow, and Crowchild Trail that addresses bottlenecks and traffic weaving.
 - Key Principle #3: Improve Mobility Across the Corridor**
 - Enhance the safety and accessibility of transit stops throughout the Crowchild Trail corridor.
 - Enhance pedestrian and cycling access across the corridor, both in the number and quality of crossings.
 - Ensure alternate access is provided for bordering communities and businesses if access to Crowchild Trail is removed or changed.

PHASE 3 - Concept Identification

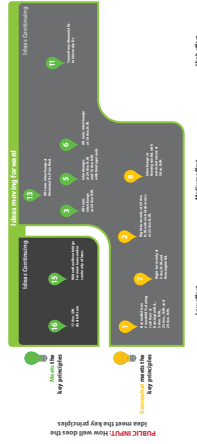


PHASE 4 - Concept Evaluation



We asked:
 Calgarians to help us evaluate the 7 preliminary concepts against the project goals

11 ideas continuing from Phase 3 were grouped into 7 preliminary concepts



	1. Kensington Interchange	2. Central Tunnel	3. Bow River Crossing	4. North Section Optimization	5. 16 Ave. & 24 Ave. Interchanges	6. 17 Ave. Optimization	7. Rebuild Crowchild Trail Bridges
CENTRAL SECTION	10	10	10	10	10	10	10
BOW RIVER BRIDGE SECTION	10	10	10	10	10	10	10
NORTH SECTION	10	10	10	10	10	10	10
SOUTH SECTION	10	10	10	10	10	10	10

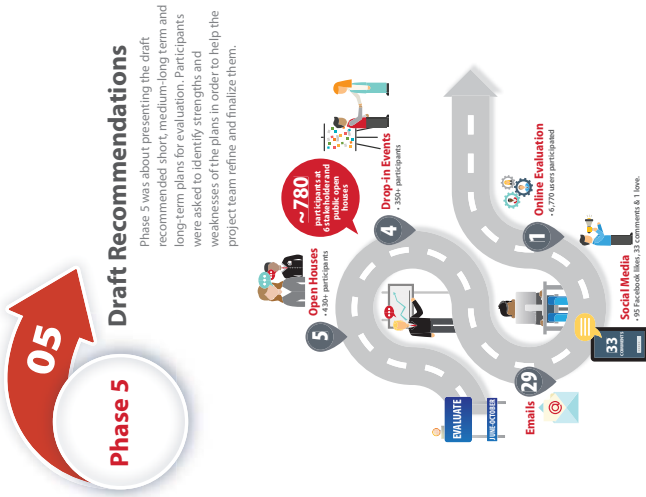
What we heard:
 7 preliminary concepts evaluated

	Key Principle 1	Key Principle 2	Key Principle 3
Preliminary concepts			
1. Kensington Interchange	Green	Yellow	Red
2. Central Tunnel	Green	Green	Green
3. Bow River Crossing	Green	Green	Green
4. North Section Optimization	Green	Green	Green
5. 16 Ave. & 24 Ave. Interchanges	Green	Green	Green
6. 17 Ave. Optimization	Green	Green	Green
7. Rebuild Crowchild Trail Bridges	Green	Green	Green

Legend:
 Green: meets Key Principle well
 Yellow: somewhat meets Key Principle
 Red: does not meet Key Principle

Outcome
 Based on the public evaluation of the 7 preliminary concepts above, and further technical review, draft recommendations were developed.

PHASE 5 - Concept Selection



We asked:
We asked the public to review the draft recommendations and identify the strengths and weaknesses in order to help us refine and improve them.

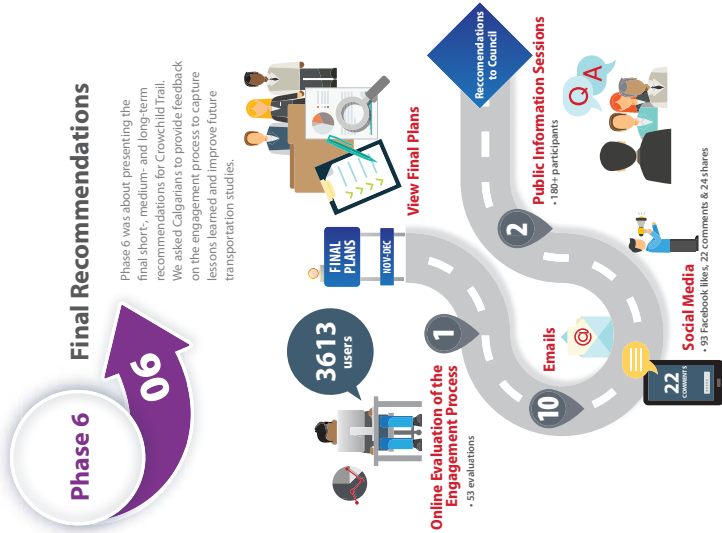
What we heard:

Common responses regarding strengths of the recommendations	Common responses regarding weaknesses of the recommendations
Balanced plan that meets all three key principles	Need faster implementation
Park enhancements will be good	No need for two pedestrian bridges in the south section / the pathway connection to the Richmond Rd. off-leash park is unnecessary
Right hand east to University Dr. will improve traffic flow	No eastbound flow Trail to southbound Crowchild Trail access
Addition of new bike path and pedestrian connections throughout the corridor	Limited Transit access near 17 Ave.
Improved connectivity and safety for crossings at 5 Avenue NW.	Short term plan does not improve pedestrian/cyclist connections or address the lights going northbound
Short-term plan will fix the 10 Ave. S.W. ramp provide for additional lanes and reduce weaving	Unclear about the ability of traffic circles to manage traffic flow and lack of knowledge about how to use them
Removal of traffic lights will improve traffic flow	More noise attenuation needed in the south section
Lowering Crowchild Trail will reduce noise impacts in the Central section	Concerns about safety of underpasses for people who walk and bike

Outcomes:
Well balanced plans that meet the 3 Key Principles and 11 goals of the study.
How the plan was refined:

Walking & Cycling	Green Spaces
Added connections to north/south pathway system from Toronto Cres. and 13 Ave. N.W.	Added additional green buffer space at University Dr. on the east side of Crowchild Tr.
Changed crossing of Memorial Dr. to a combination of overpass/underpasses to address concerns about underpasses at this location	Provided additional green buffer space on east side of Crowchild Tr. near 13 Ave. N.W.
Added enhanced overpass at Sonoma Ave. for a better pedestrian experience	Noise
Moved the location of the pedestrian overpass south of 17 Ave. S.W. to pass the dog park on the east side of Crowchild Tr.	Extended location of the noise wall on the north side of 5 Ave. N.W. on east side of Crowchild Tr. to provide better protection for houses along 4 Ave. N.W.
Moved the location of the pathway between 14 Ave. S.W. and Bow Tr. to separate it from Spangnapark Park.	Access
Enhanced plans for shared space at 24 St. N.W.	Extended frontage road on east side of Crowchild Tr. at Motel Village to ensure access to all current properties

PHASE 6 - Reporting and Completion

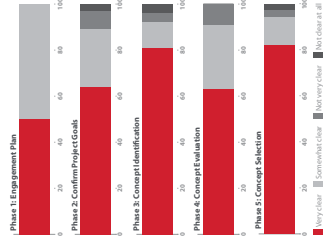


We asked:

We asked Calgarians if it was clear how public input was used to develop the recommended plans. We also asked them to share positive results of the study and/or process, as well as what was not addressed or what did not work well.

What we heard:

The majority of respondents said they could see how public input was used throughout each phase of the study.



What do you think was a positive result of the study and/or process?

Public engagement process - respondents said they can see the effort that was put into the study and that some noted they could see their ideas reflected in the recommendations.

Addressing accessibility, walking and bike concerns with pathway additions and new pedestrian bridges.

Improving traffic flow on Crowchild Tr.

Upgrading the Bow River Bridge in the short term

Property impacts were minimized

What was not addressed well?

Noise protection for communities south of the river

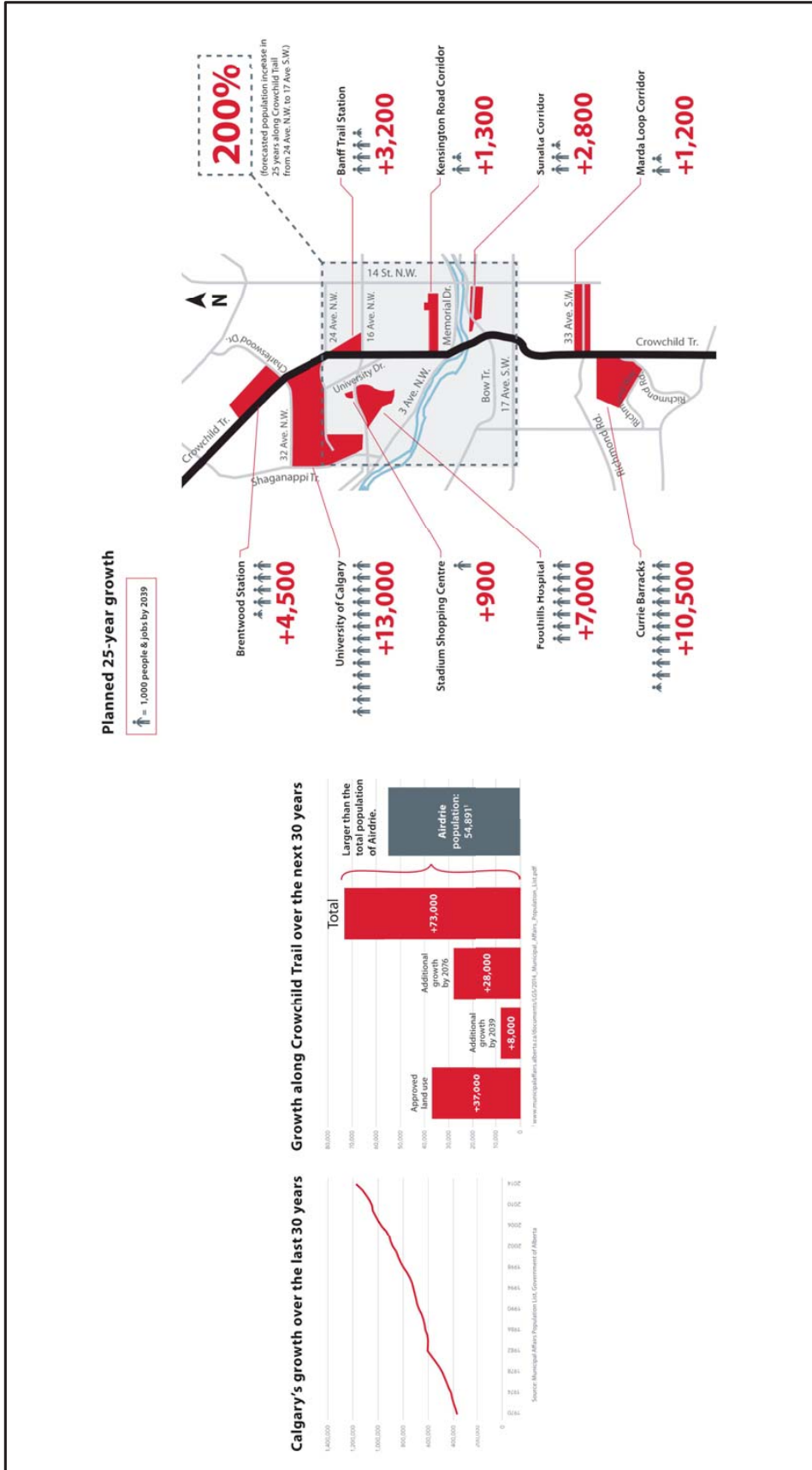
Clarity around next steps and construction timing

Needs to implement changes and upgrades sooner

Outcomes:

Lessons learned from this study will be used to improve future transportation corridor studies.

Crowchild Trail Study - Six-Phase Study Process Summary



CROWCHILD TRAIL STUDY

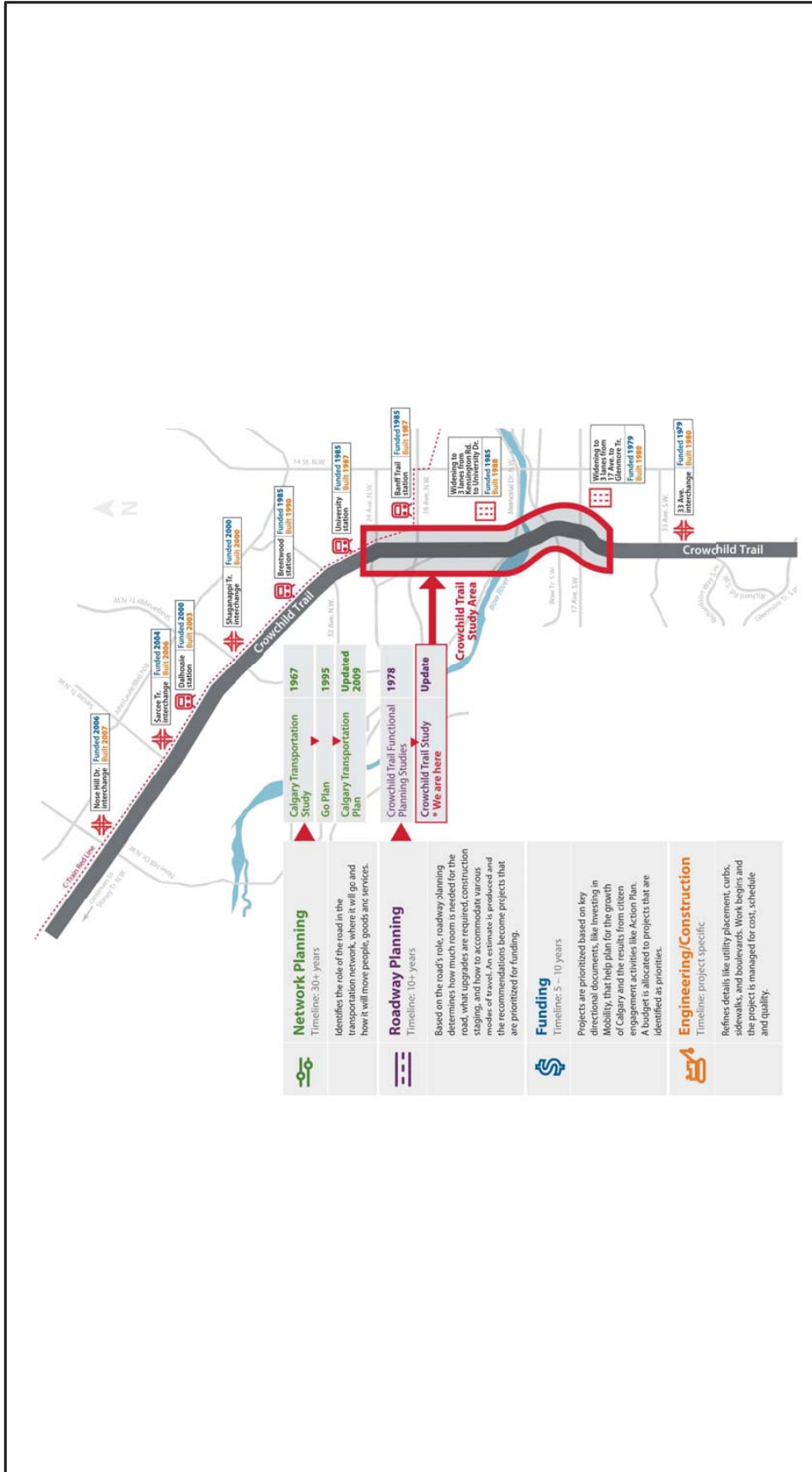
Legend:

PLANNING FOR GROWTH
 EXHIBIT 1.2
 2017/03/01

PRELIMINARY
 FOR DISCUSSION ONLY
 SUBJECT TO DESIGN



Crowchild Trail Study - Six-Phase Study Process Summary



Legend:

CROWCHILD TRAIL STUDY

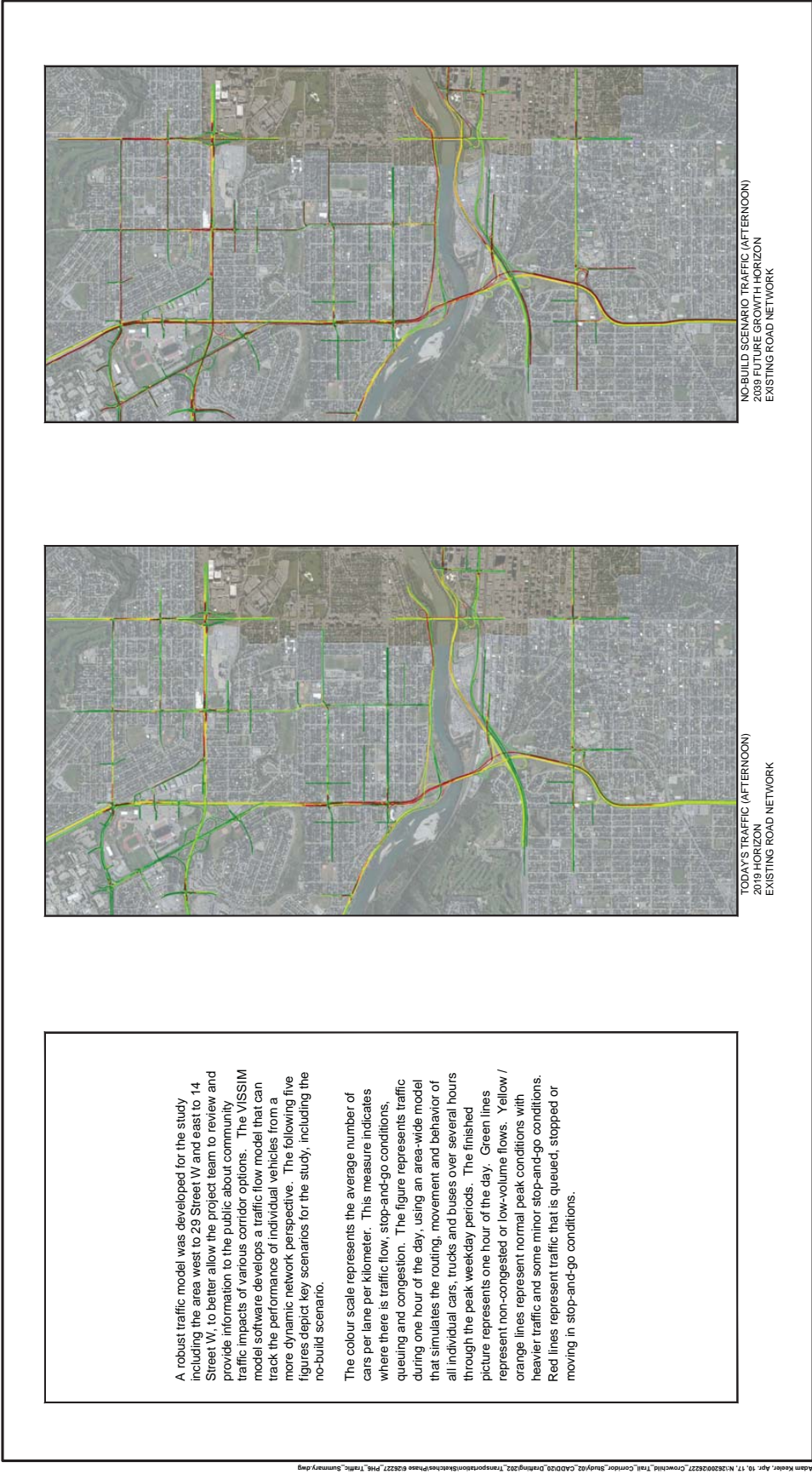


INFRASTRUCTURE PLANNING PROCESS

EXHIBIT 1.3
2017/03/01

PRELIMINARY
FOR DISCUSSION ONLY
SUBJECT TO DESIGN

Crowchild Trail Study - Six-Phase Study Process Summary



CROWCHILD TRAIL STUDY

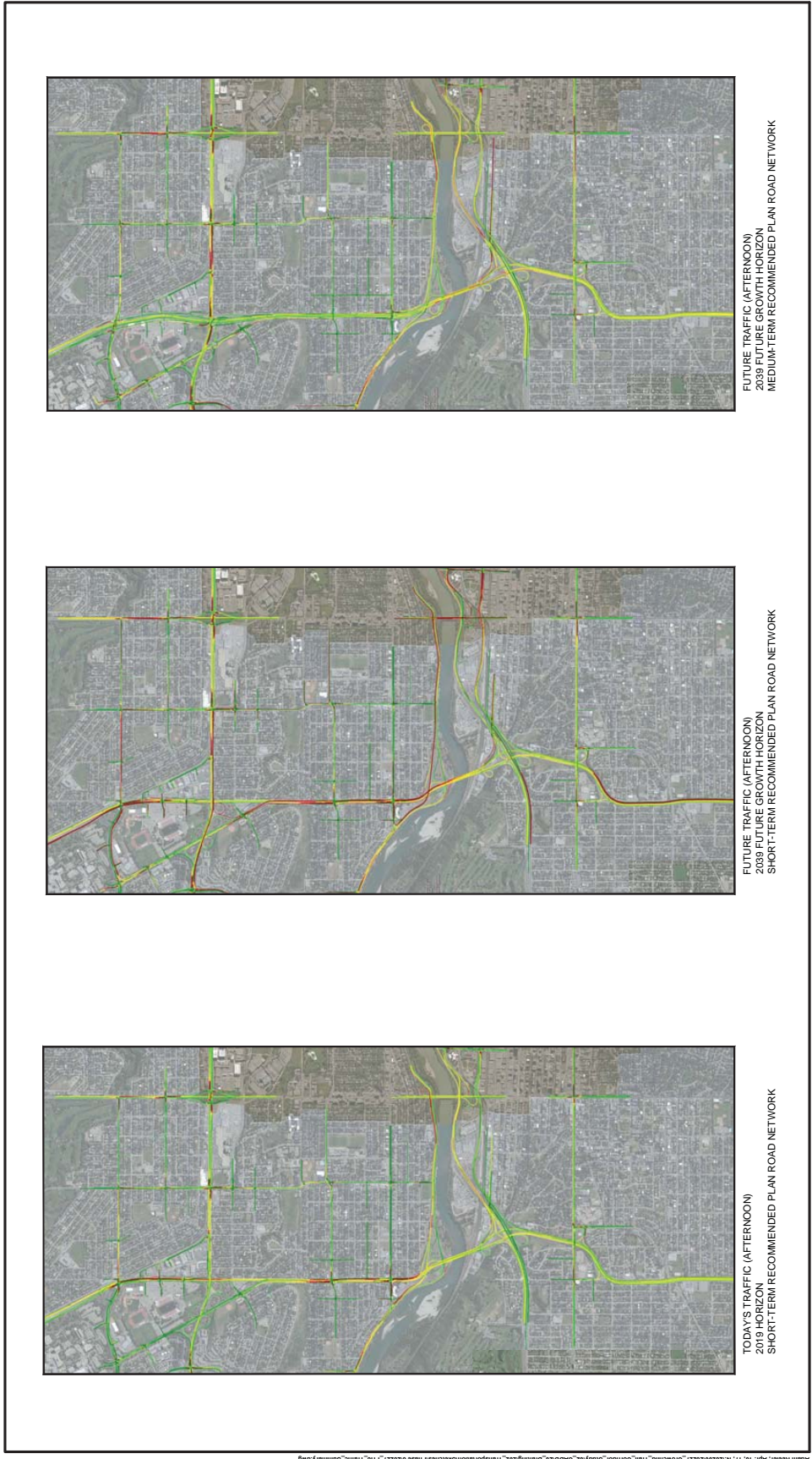
TRAFFIC SUMMARY

EXHIBIT 3.1
2017/03/01

PRELIMINARY
SUBJECT TO REVISION



Crowchild Trail Study - Six-Phase Study Process Summary



CROWCHILD TRAIL STUDY

TRAFFIC SUMMARY

EXHIBIT 3.2
2017/03/01

Legend:

<p>LOS DENSITY RANGE (pc/km/h)</p> <p>A < 7</p> <p>B 7 - 11</p> <p>C > 11 - 16</p> <p>D > 16 - 22</p>	<p>LOS DENSITY RANGE (pc/km/h)</p> <p>E > 22 - 28</p> <p>F > 28 - 35</p>
--	--

PRELIMINARY
 SUBJECT TO REVISION

