

Calgary



CITY OF CALGARY
RECEIVED
IN COUNCIL CHAMBER

JUN 01 2020

ITEM: 7.1 GC 2020-0583
DISTRIBUTION
CITY CLERK'S DEPARTMENT

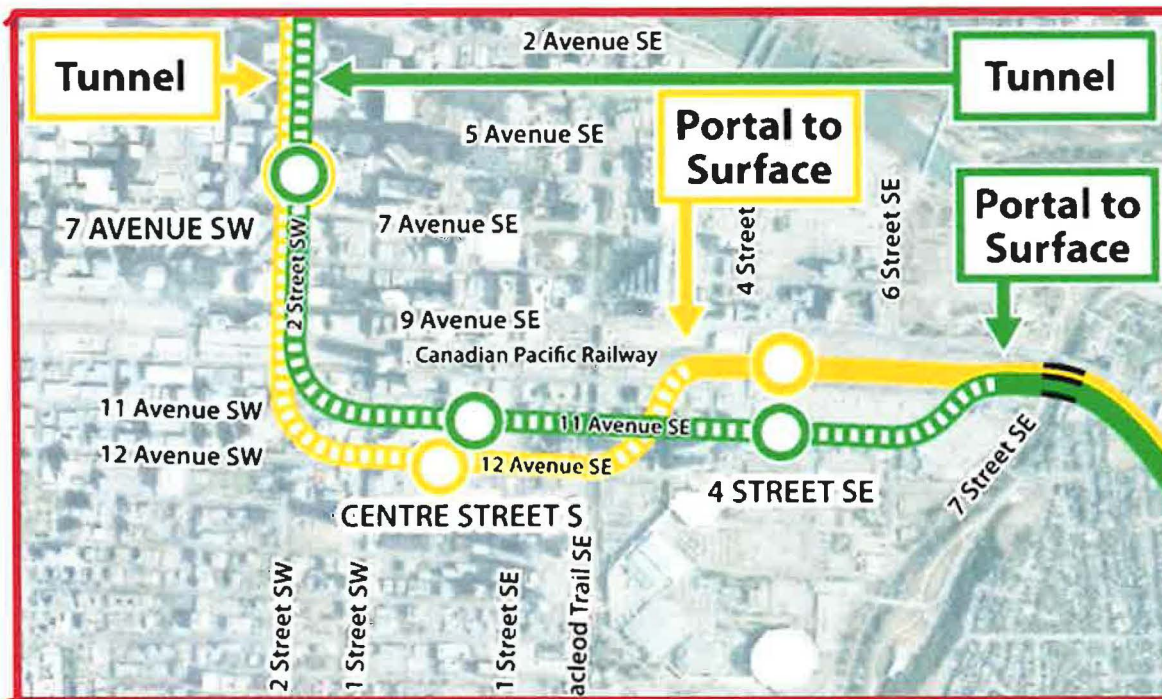
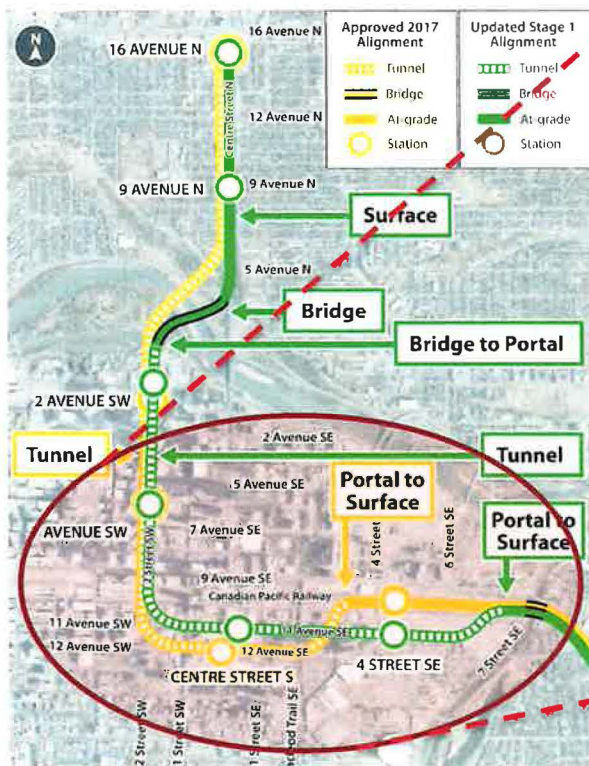
Beltline Alignment Comparison

2020 June 1



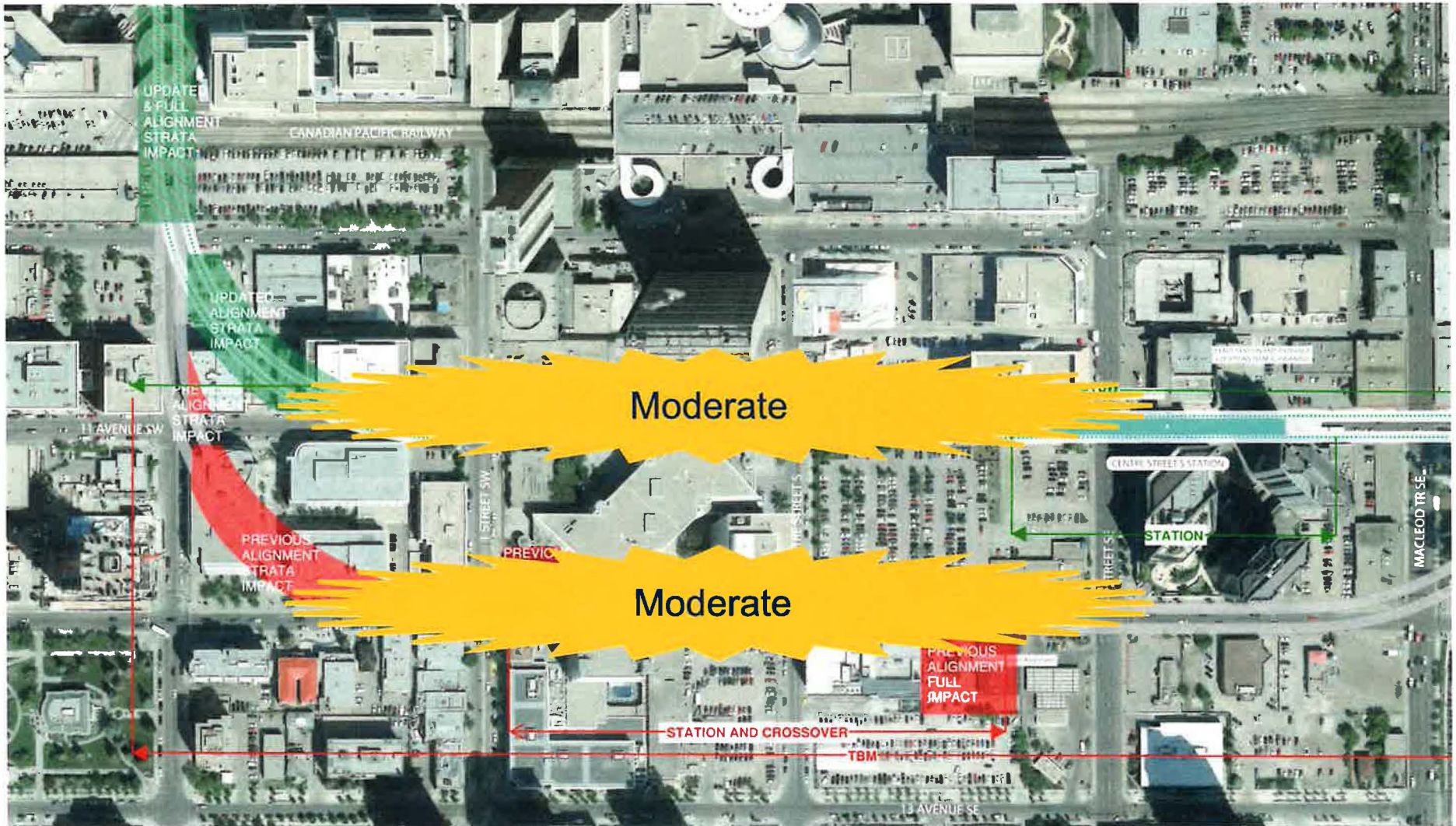
2017 Alignment vs 2020 Alignment

Focus on Beltline



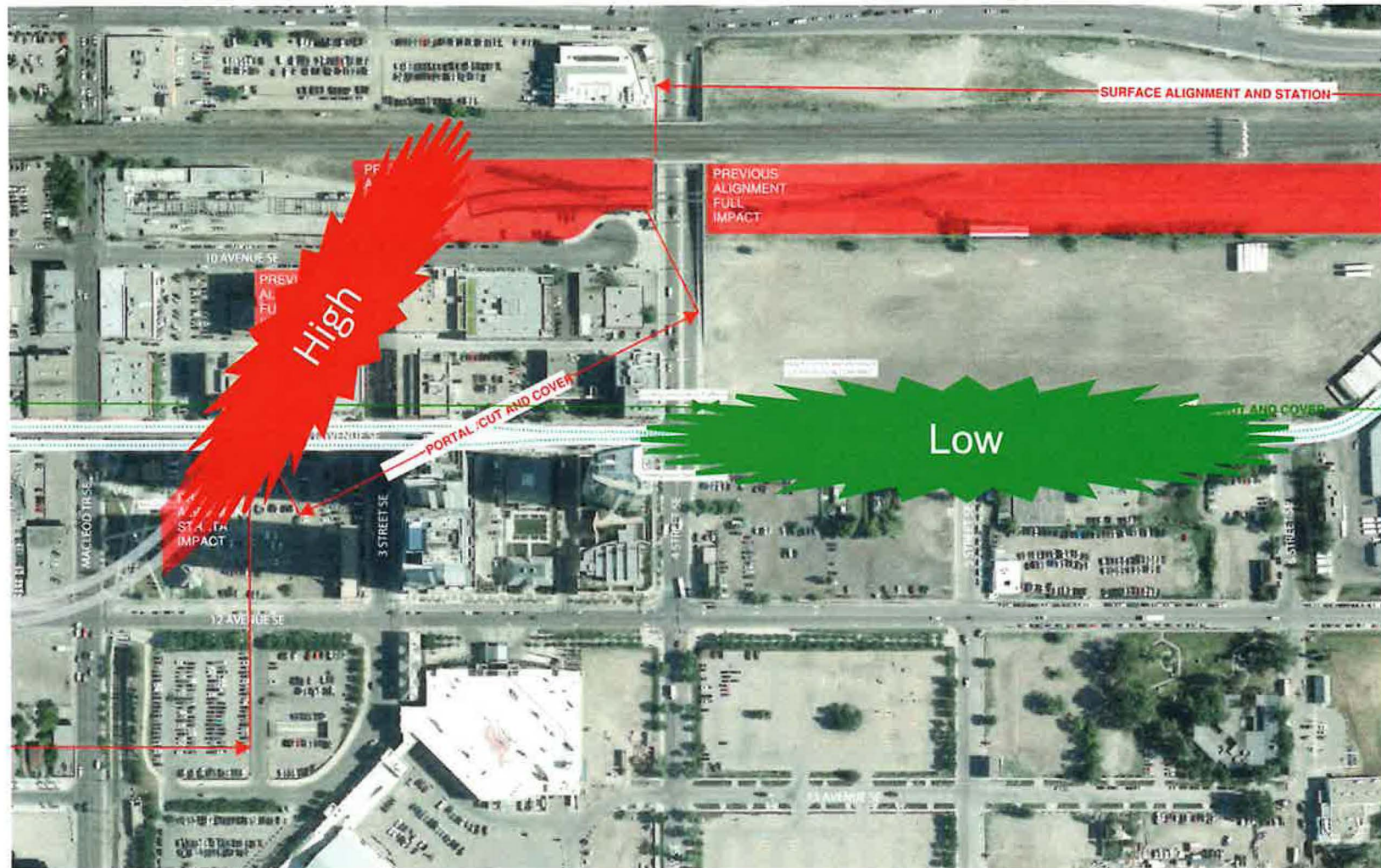


2020 Alignment vs 2017 Alignment Tunneling Risk and Complexity





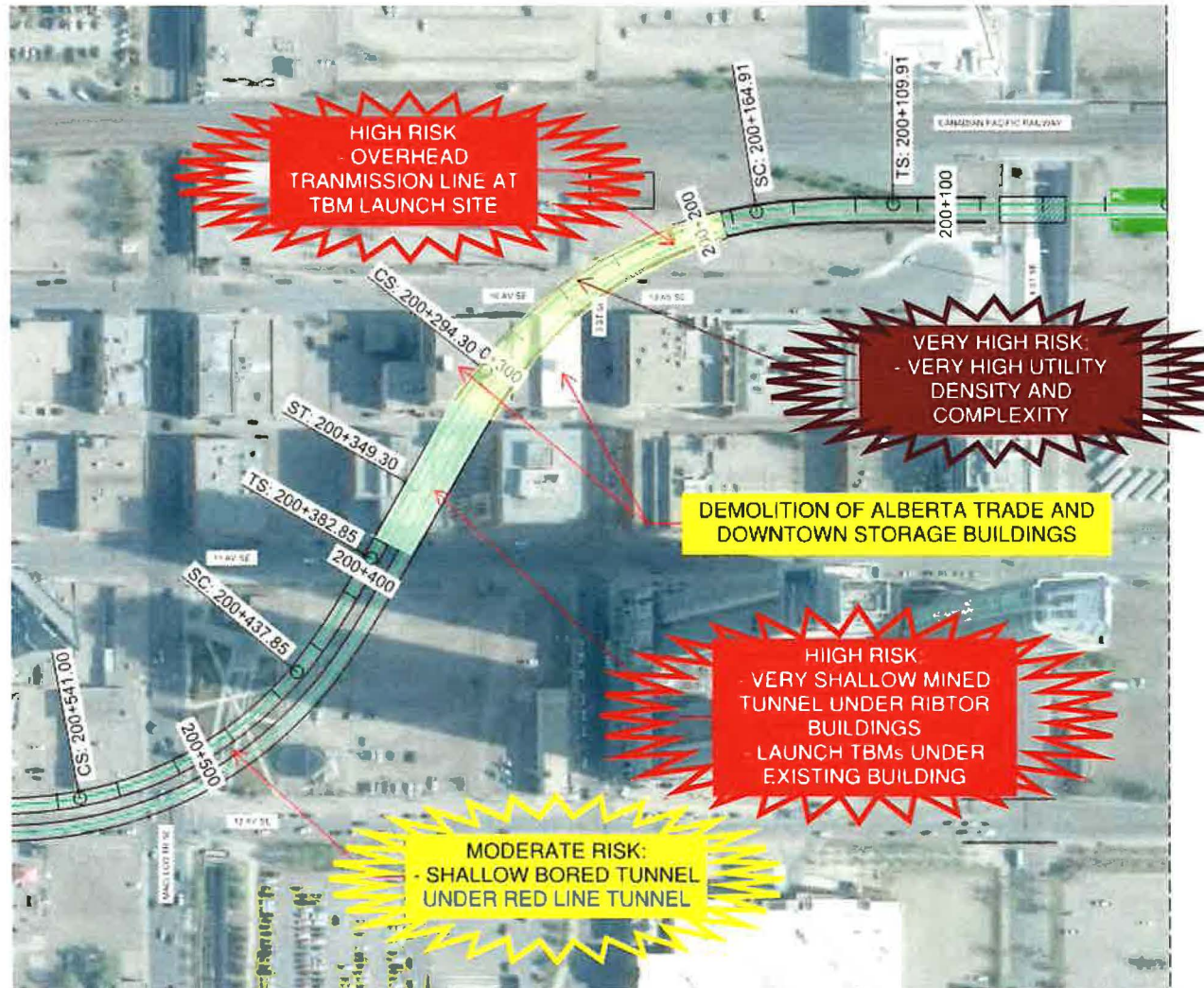
2020 Alignment vs 2017 Alignment Tunneling Risk and Complexity





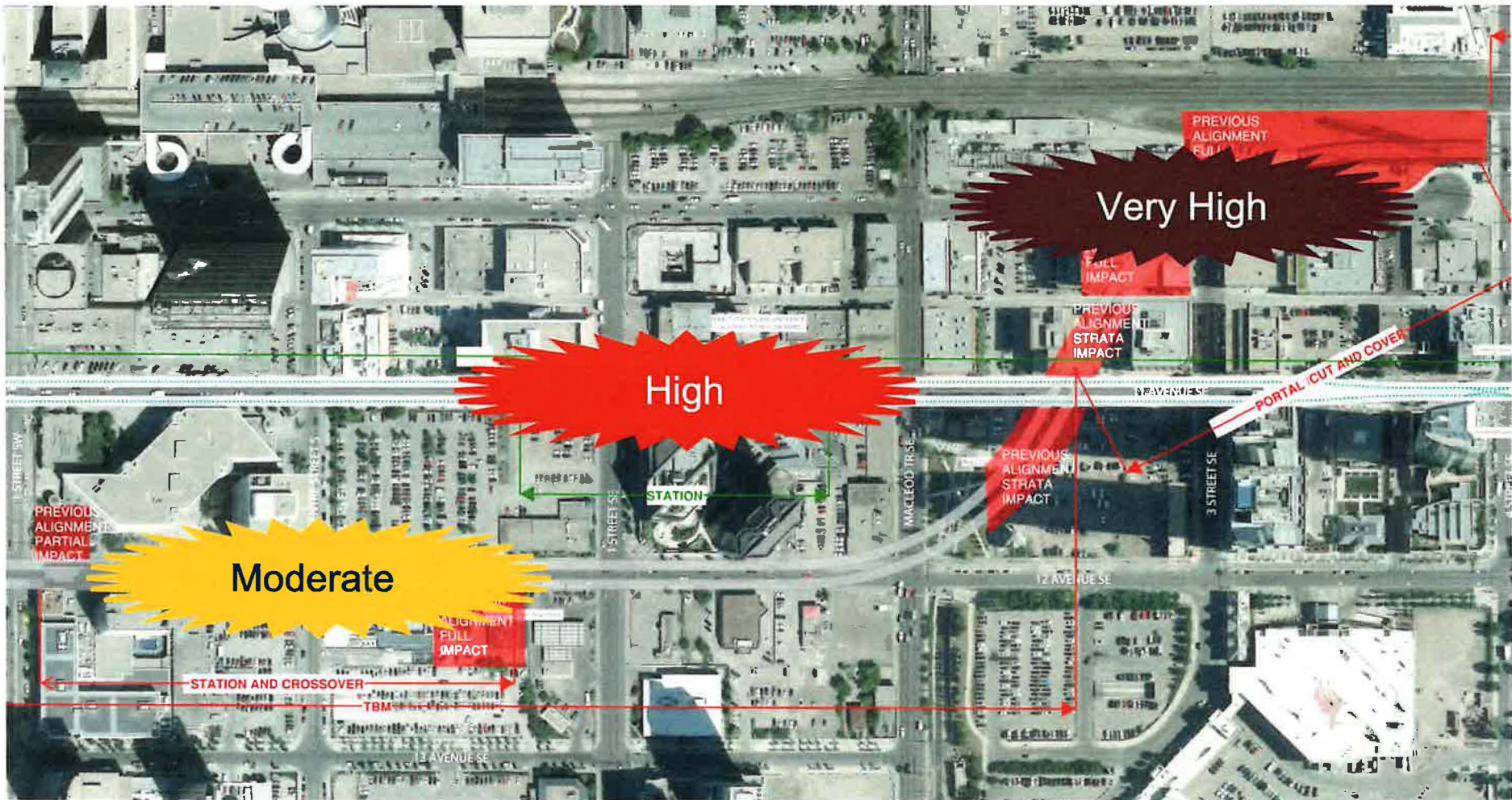
2017 Alignment Constraints

- 2017 alignment included a technically challenging and costly tunneling section between 12 Avenue S and 3 Street SE

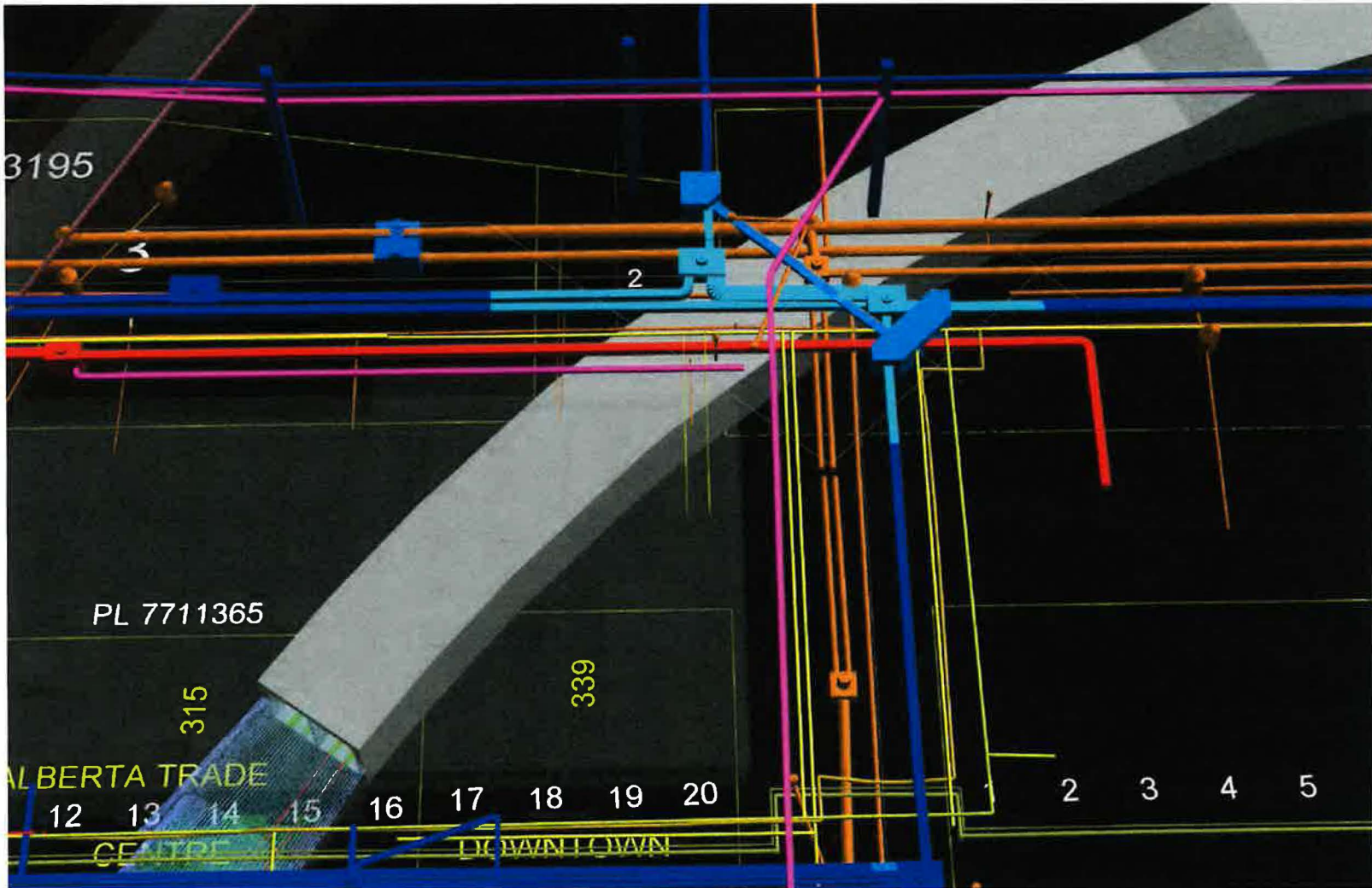




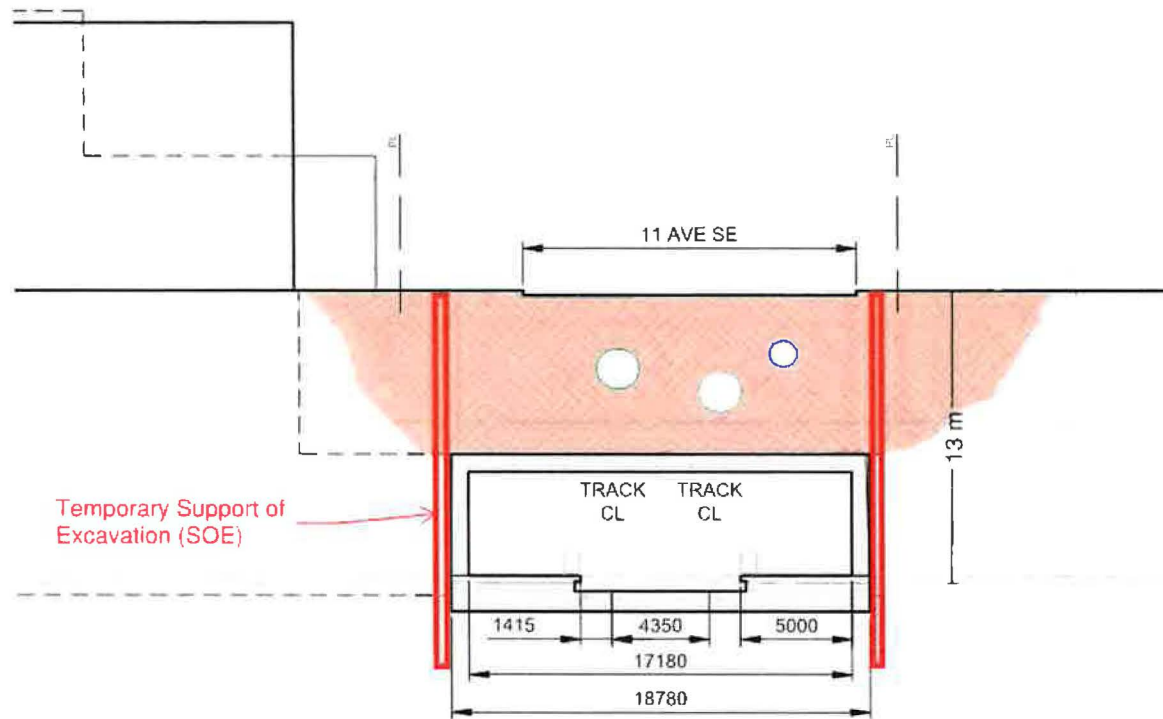
Utility Conflicts Relative Utility Density & Complexity



Utility Conflicts – 2017 Alignment 10 Avenue S – Very Heavy Utility Density



2020 Alignment Section at 4 Street SE Station



4 Street SE Cross Section

Note: Station location and elevation under review



Utility Conflicts – 2020 Alignment 11 Avenue S – Heavy Utility Density



Example of large utilities suspended in excavation



Utility Conflicts – 2020 Alignment 11 Avenue S – Heavy Utility Density



Example of large utilities suspended in excavation



Utility Conflicts – 2020 Alignment 11 Avenue S – Heavy Utility Density



Example of 2600mm diameter live sanitary sewer suspended in excavation