



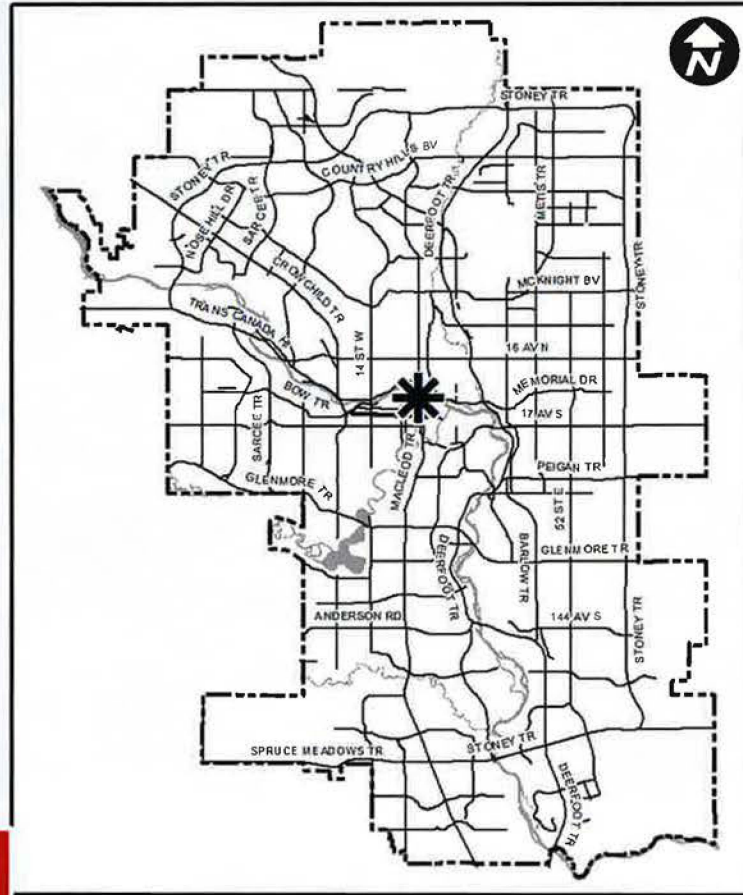
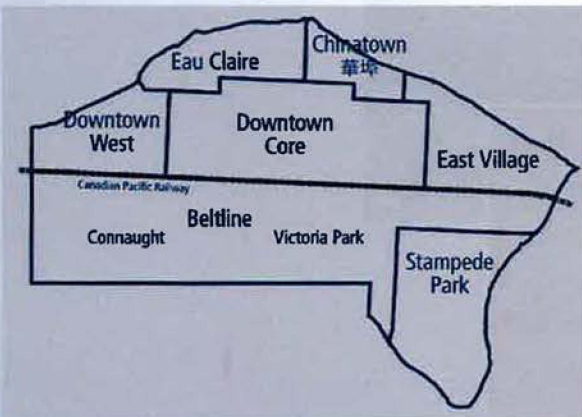
Calgary Planning Commission
Agenda Item: 7.3.1

CITY OF CALGARY
CITY CLERK
IN COUNCIL CHAMBER
JUN 04 2020
ITEM: 7.3.1 CPC2020-0497
Public Distribution
CITY CLERK'S DEPARTMENT

CPC2020-0497
Eau Claire Public Realm
Improvements



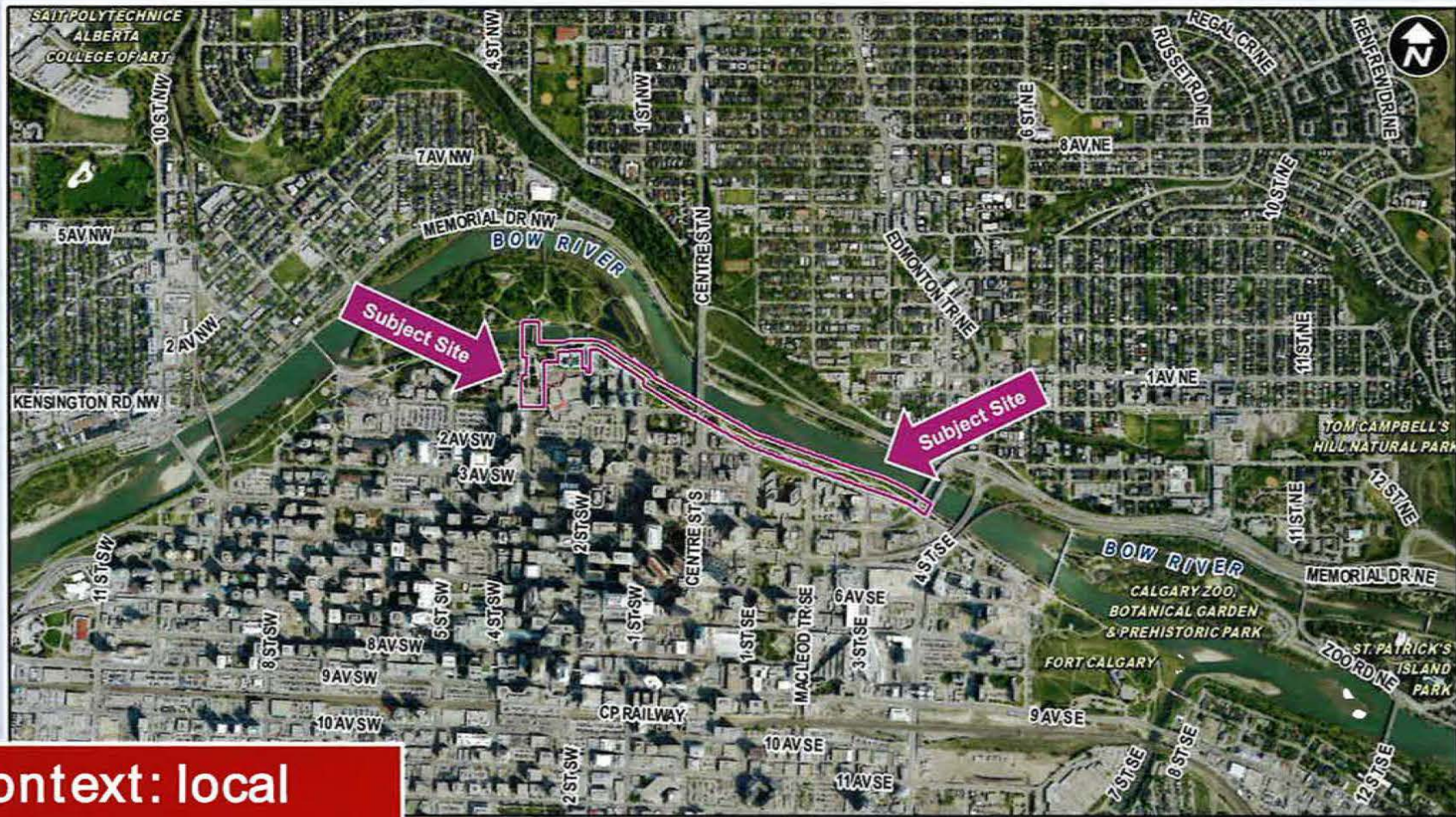
Calgary Planning Commission Agenda Item: 7.3.1



Context: city wide

CLUB TREASURER'S REPORT
 ELIGIBLE

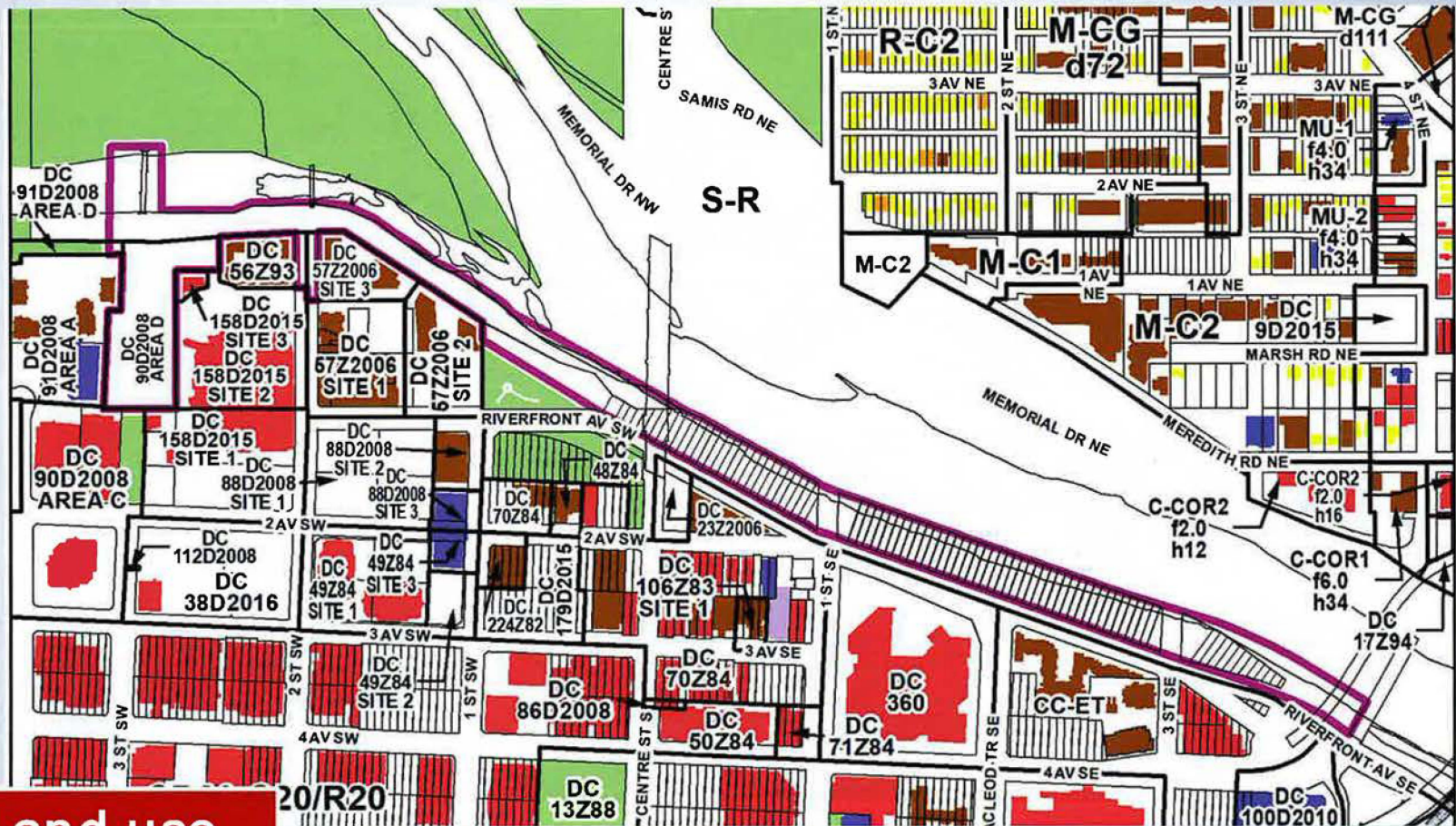
Calgary Planning Commission Agenda Item: 7.3.1



Context: local

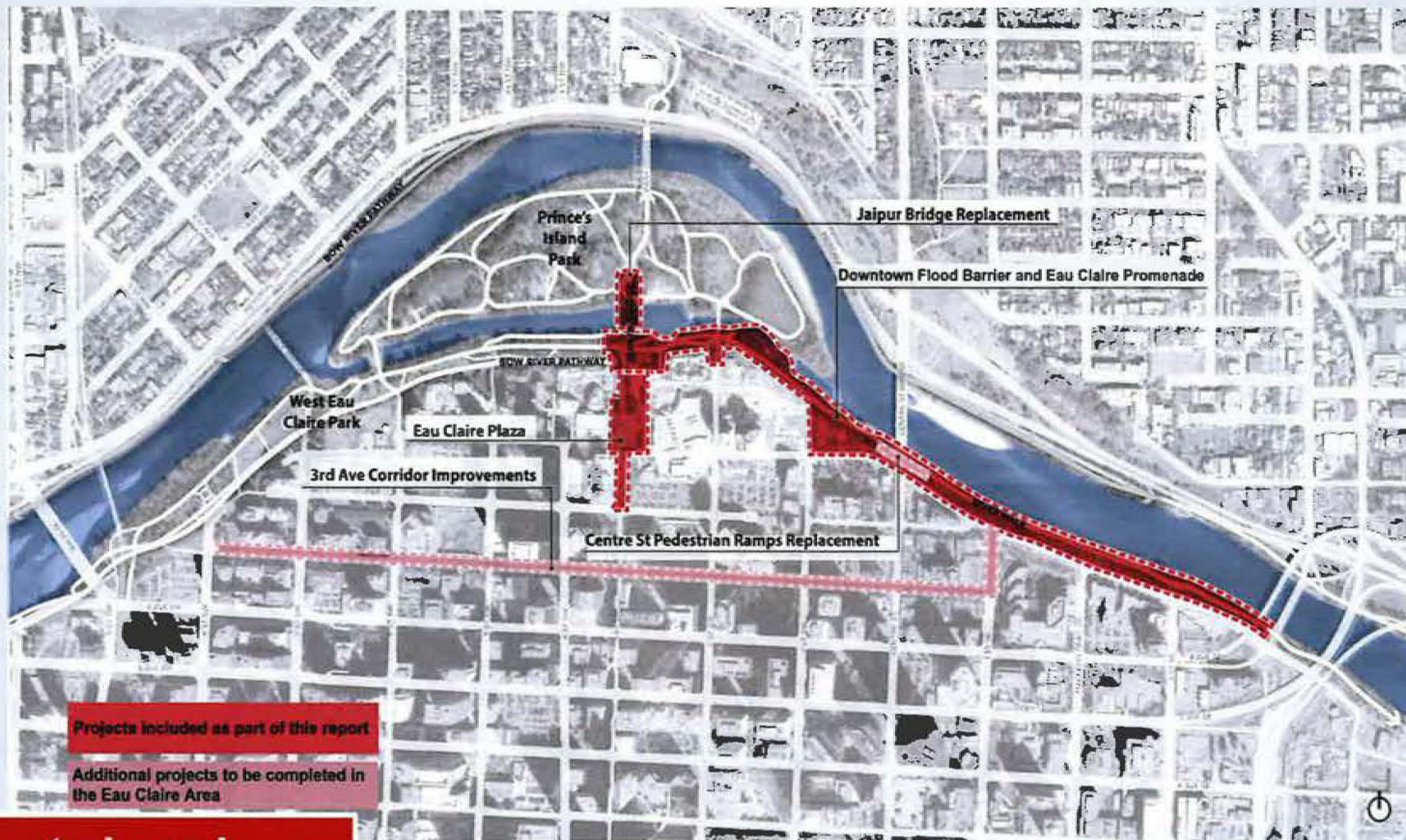
Calgary Planning Commission Agenda Item: 7.3.1

- LEGEND
- Residential Low Density
 - Residential Medium Density
 - Residential High Density
 - Commercial
 - Heavy Industrial
 - Light Industrial
 - Parks and Openspace
 - Public Service
 - Service Station
 - Vacant
 - Transportation, Communication, and Utility
 - Rivers, Lakes
 - Land Use Site Boundary



Context: Land use

Calgary Planning Commission Agenda Item: 7.3.1



Context: local

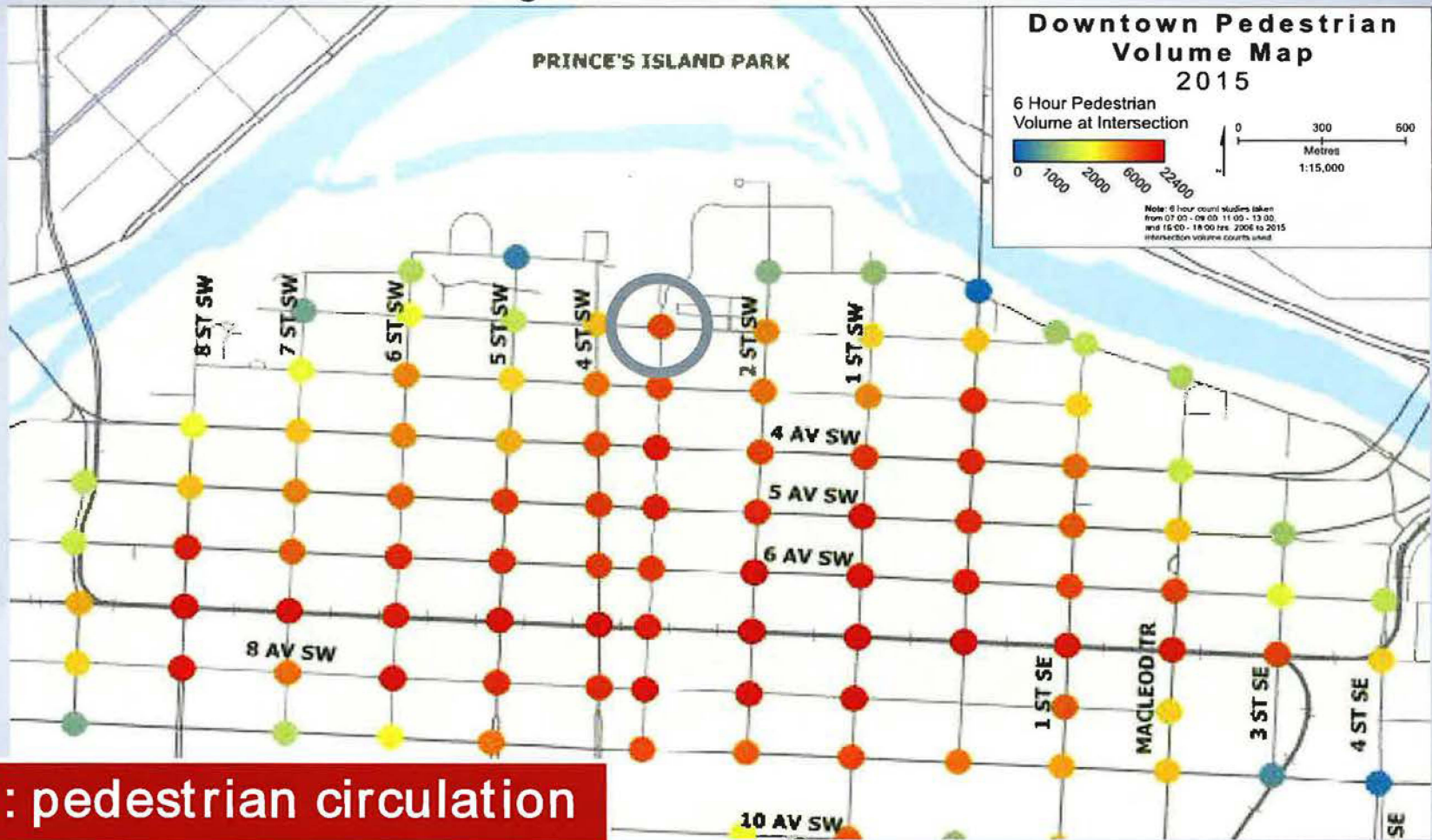
Calgary Planning Commission Agenda Item: 7.3.1

CONTEXT: 1009



Context: circulation cycling

Calgary Planning Commission Agenda Item: 7.3.1



Context: pedestrian circulation

Calgary Planning Commission

Agenda Item: 7.3.1



Image courtesy of <https://www.todocanada.ca/canada-day-in-calgary>

Context: vibrancy

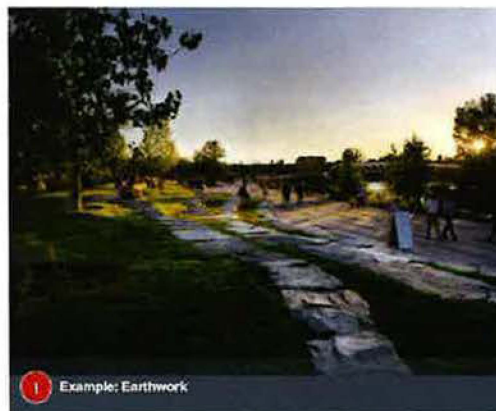
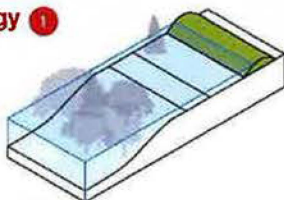
Calgary Planning Commission

Agenda Item: 7.3.1

Flood Mitigation Strategies

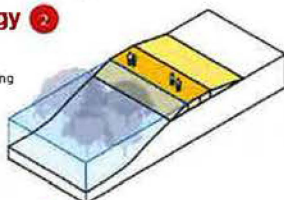
Flood Strategy 1

Earthwork
Permanent on-site infrastructure, utilizing earthwork, berms and reinforced terraces to mitigate flooding events.



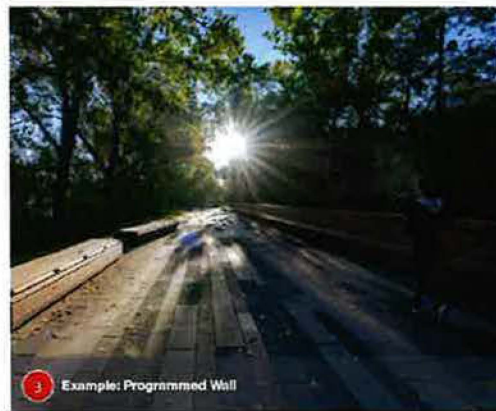
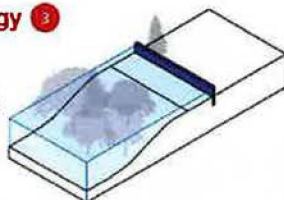
Flood Strategy 2

Raised Promenade
Permanent on-site infrastructure, incorporating an multi-use pathway elevated above flood event levels.



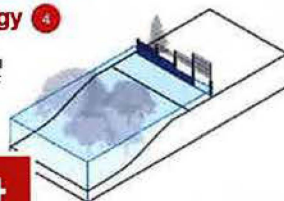
Flood Strategy 3

Programmed Wall
Permanent on-site infrastructure, utilizing a raised wall system that incorporates public realm amenities such as bench seating, wayfinding signage, interpretive elements and art.



Flood Strategy 4

Panel - Post - Panel System
Semi-permanent, minimal on-site infrastructure that will be mobilized only in the event of a flood.



Context: environment

Calgary Planning Commission Agenda Item: 7.3.1

BOW RIVER

ELBOW RIVER

Watershed-scale
Mitigation

New Reservoir

Enhanced Reservoir
Operation

Glenmore Gates

Springbank
Reservoir

Community Flood Barriers

Land-Use Policy

Community
Scale
Mitigation

Downtown Flood Barrier



Sunnyside
Flood Barrier

Bowness Flood
Barrier

Context: resiliency

Calgary Planning Commission
Agenda Item: 7.3.1

11

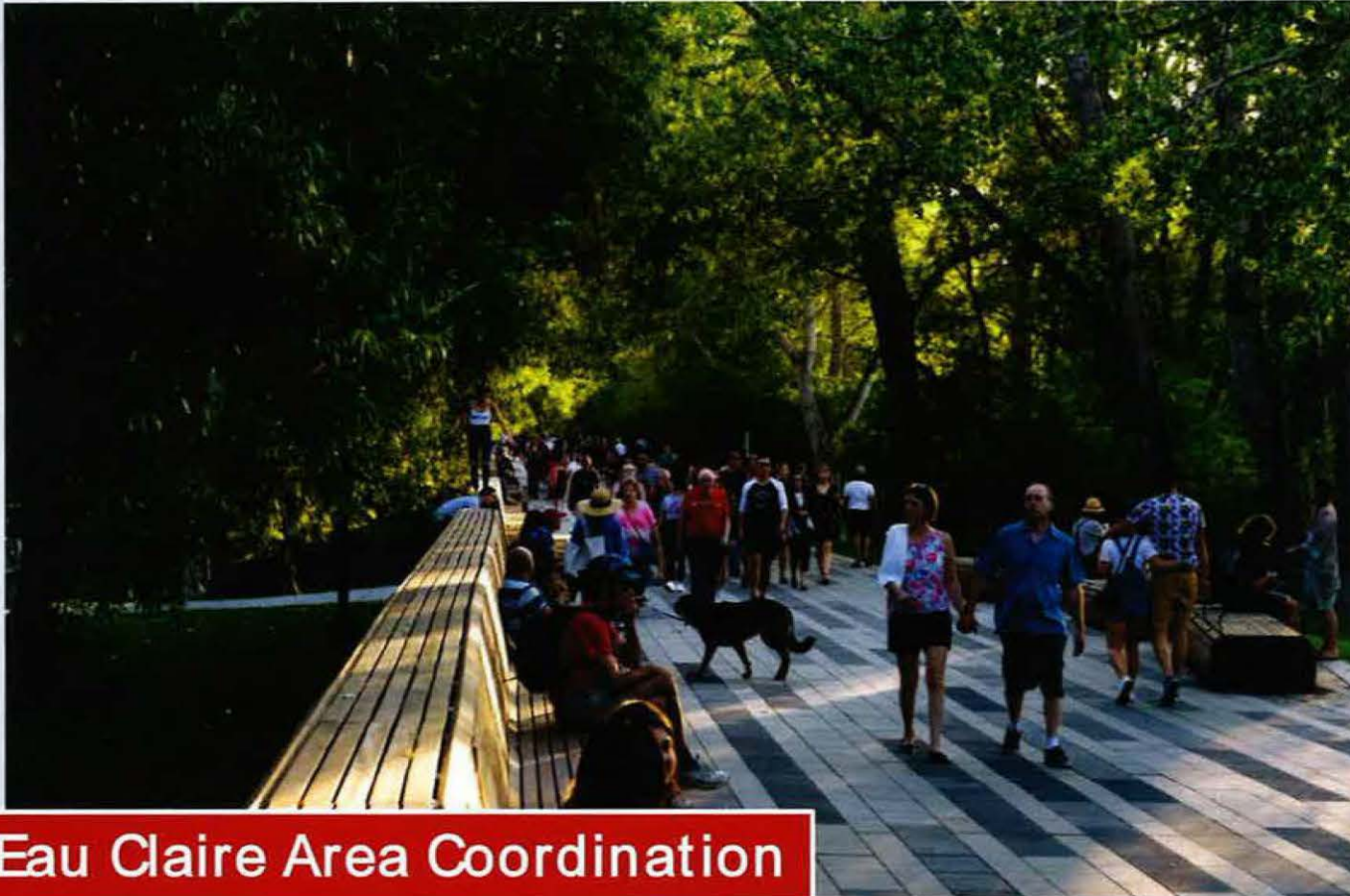


Program: Eau Claire Public Realm Plan

June 3, 2020

CPC2020-0497

Calgary Planning Commission
Agenda Item: 7.3.1



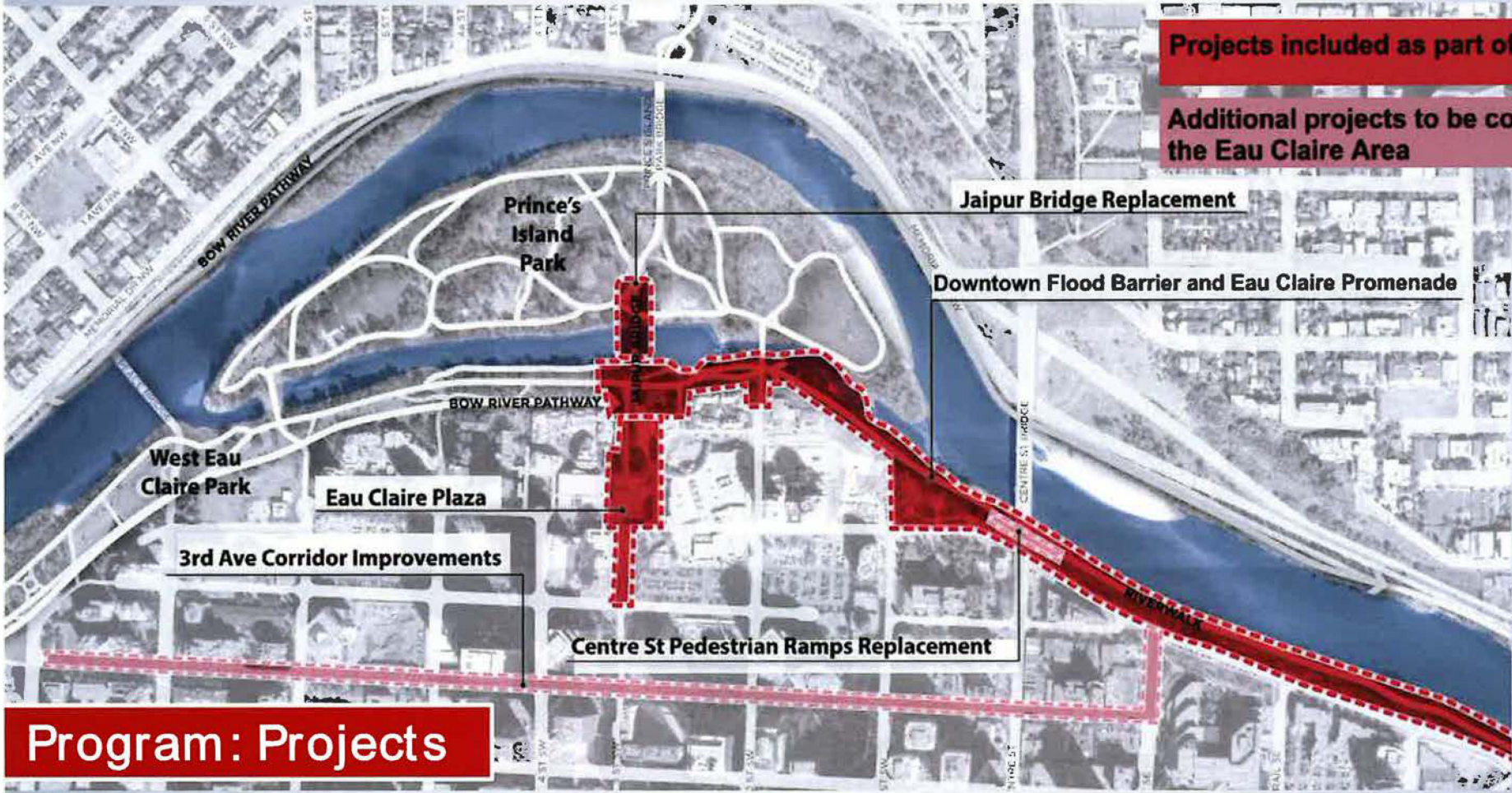
Program: Eau Claire Area Coordination

Calgary Planning Commission Agenda Item: 7.3.1



Program: Eau Claire Area Coordination

Calgary Planning Commission Agenda Item: 7.3.1

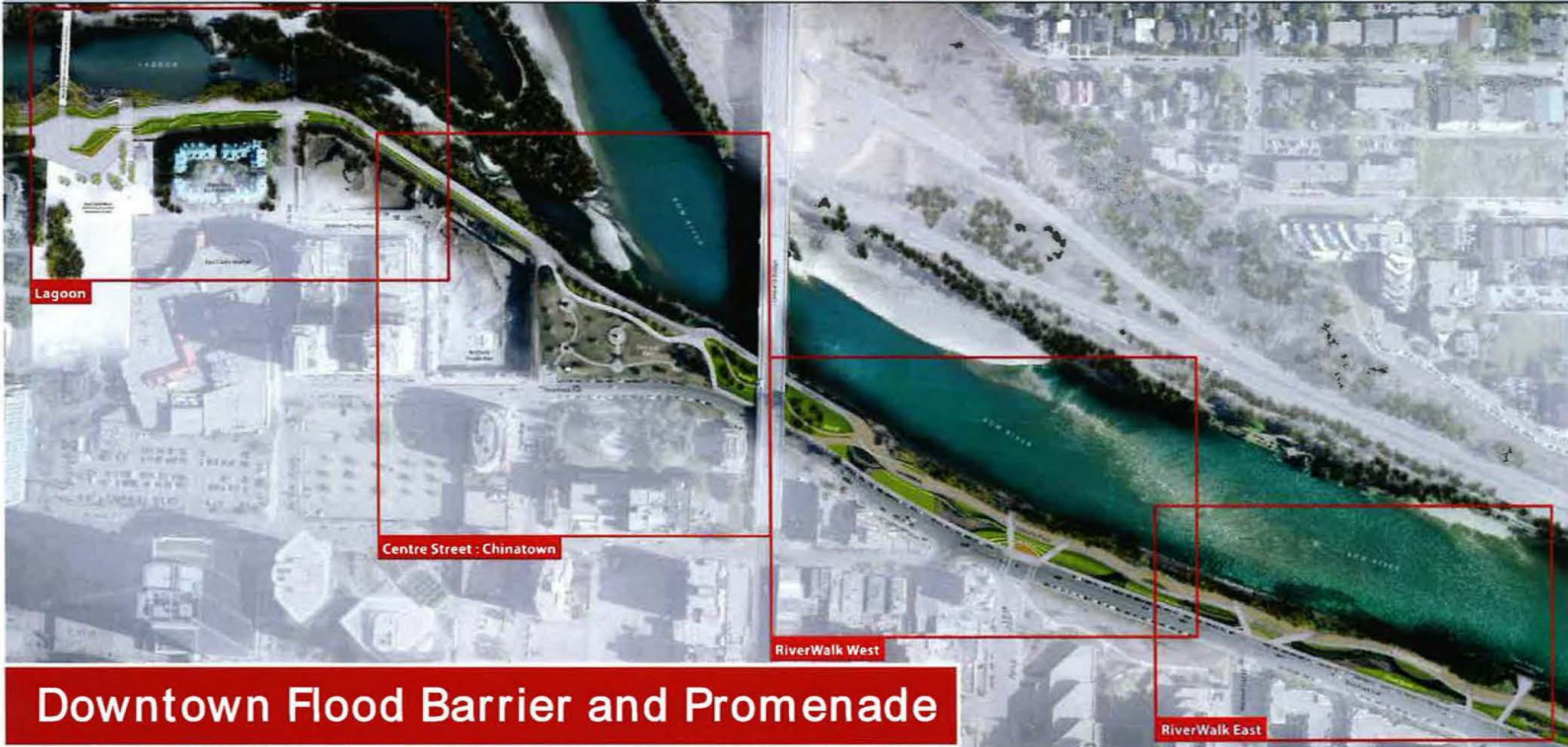


Projects included as part of this report

Additional projects to be completed in the Eau Claire Area

Program: Projects

Calgary Planning Commission Agenda Item: 7.3.1



Downtown Flood Barrier and Promenade

Calgary Planning Commission
Agenda Item: 7.3.1



Looking west at Jaipur Bridge

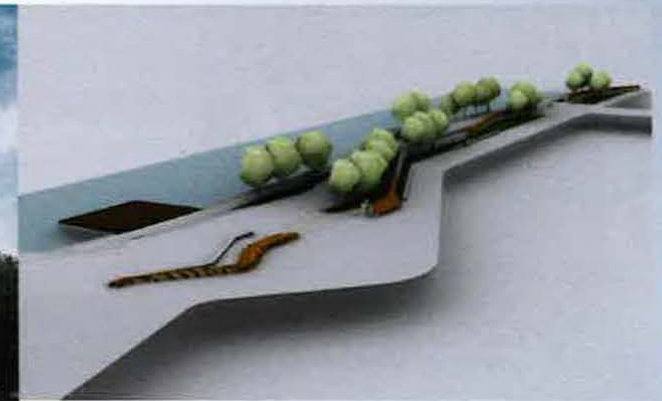


Looking east

Downtown Flood Barrier and Promenade : Lagoon



Calgary Planning Commission
Agenda Item: 7.3.1



Looking west at Jaipur Bridge

Downtown Flood Barrier and Promenade : Lagoon



Calgary Planning Commission
Agenda Item: 7.3.1



Looking east towards Centre Street



Looking east



Downtown Flood Barrier and Promenade : Centre Street

Calgary Planning Commission Agenda Item: 7.3.1



Looking west: Sien Lok park on the left

Downtown Flood Barrier and Promenade : Centre Street



Calgary Planning Commission
Agenda Item: 7.3.1



Looking west

Downtown Flood Barrier and Promenade : Riverwalk



Calgary Planning Commission Agenda Item: 7.3.1



Looking west at 1st Street SE



Looking west at Centre Street



Downtown Flood Barrier and Promenade : Centre Street

Calgary Planning Commission Agenda Item: 7.3.1



130LM lagoon access

50 new light poles/bollards

130 new trees

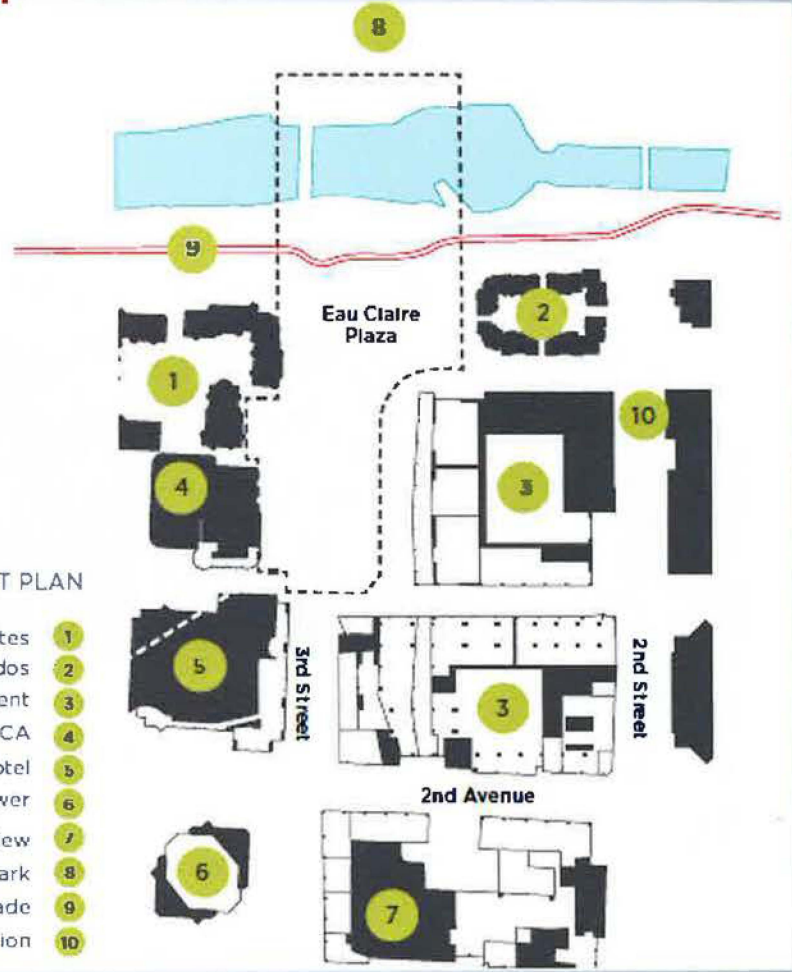
1400LM of flood wall

830 LM of dedicated bike pathway

830 LM of dedicated promenade

Downtown Flood Barrier and Promenade : Summary

Calgary Planning Commission Agenda Item: 7.3.1



EAU CLAIRE PLAZA CONTEXT PLAN

- Prince's Island Estates 1
- River Run Condos 2
- Eau Claire Market Mixed-Use Development 3
- YMCA 4
- Sheraton Hotel 5
- Devon Tower 6
- Calgary City Centre by Cadillac Fairview 7
- Prince's Island Park 8
- Eau Claire Promenade 9
- Future LRT Station 10

Eau Claire Plaza: Context

Calgary Planning Commission
Agenda Item: 7.3.1



Looking south into the Plaza

Plaza with Olympic Sculpture



North Entrance to Plaza

Eau Claire Plaza: Context

Calgary Planning Commission

Agenda Item: 7.3.1

25



Water park



Amphitheatre at Eau Claire Promenade

Eau Claire Plaza: Context

Calgary Planning Commission Agenda Item: 7.3.1

For the Community and the City

A Vibrant Plaza

animated year-round
with programming and
events, large and small

A Flexible Plaza

with comfortable spaces and
quality amenities that embrace
everyday community use

Resilient and Responsible

A Green Plaza

which exemplifies best practices
for sustainable design and
uses high quality materials

An Authentic Plaza

honouring the natural, cultural
and social heritage of the site

Active and Multi-Modal

An Integrated Plaza

with clear connections to
pathways, local amenities, transit,
and the adjacent community

An Accessible Plaza

with opportunities for
all ages + abilities

Character Areas

- 1 Urban Plaza
- 2 Central Green
- 3 Riverside Terraces
- 4 Market Street
- 5 Promenade
- 6 Play

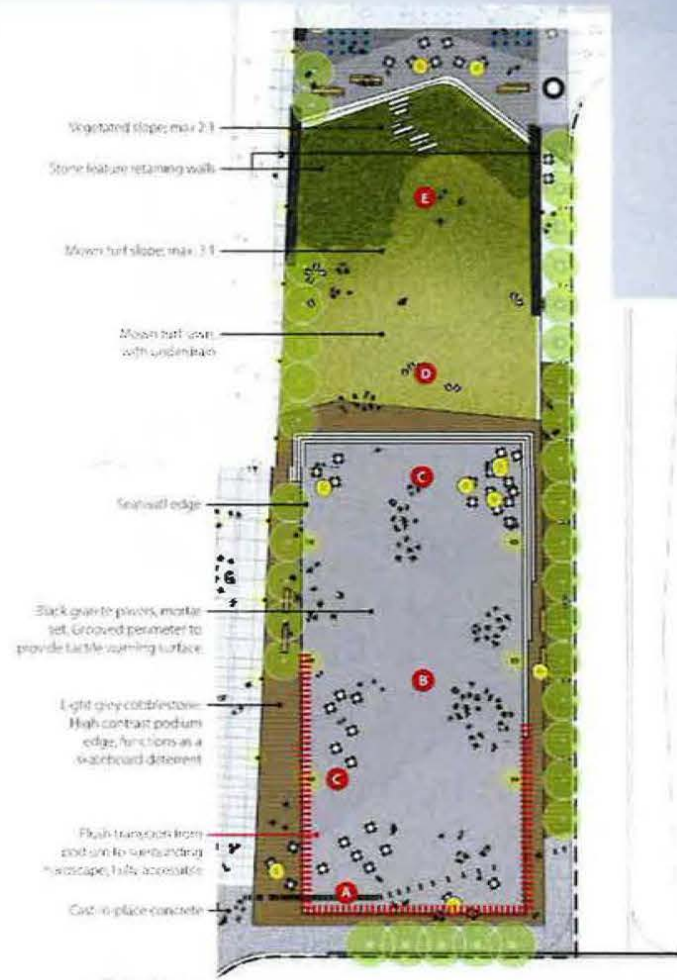


Eau Claire Plaza: Vision

Calgary Planning Commission Agenda Item: 7.3.1



Looking north at Urban Plaza



Eau Claire Plaza: Urban Plaza & Central Green

Calgary Planning Commission Agenda Item: 7.3.1



Looking east

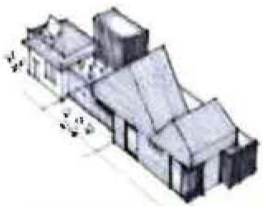


Eau Claire Plaza: Riverside Terraces

Calgary Planning Commission Agenda Item: 7.3.1



Looking south

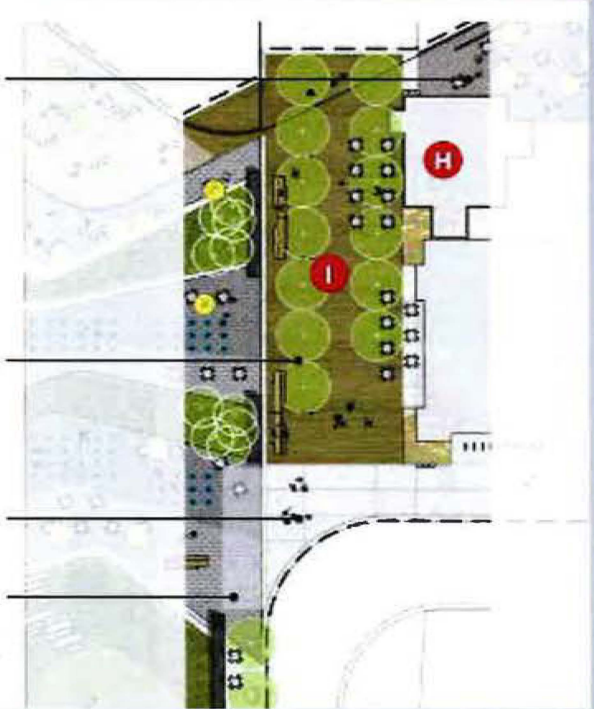


Cast-in-place concrete or precast concrete pavers to coordinate with Eau Claire Promenade

Timber boardwalk

Cast-in-place concrete

Relocated Olympic Monument established as a secondary gateway

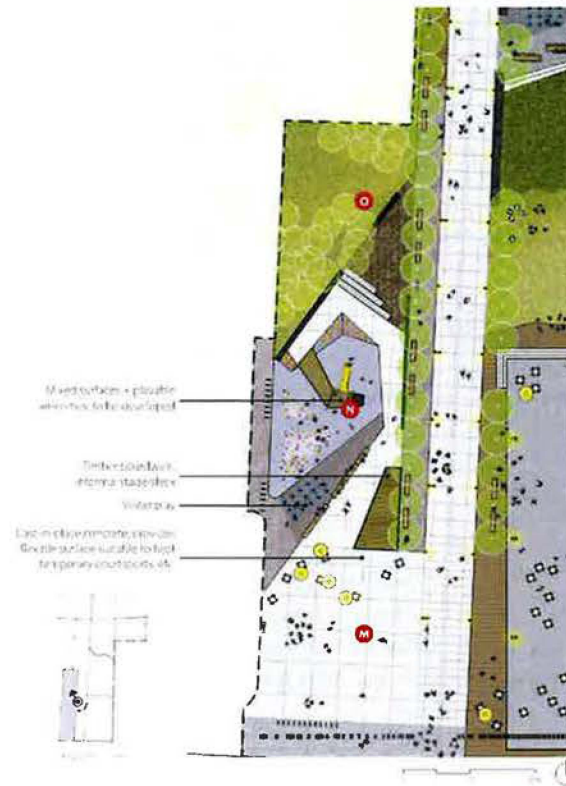


Eau Claire Plaza: Market Street

Calgary Planning Commission Agenda Item: 7.3.1



Looking south



PLAY FOR ALL AGES

This space connects the Plaza with the MSA, it serves as its front porch. Activated with urban and nature-inspired elements, that encourage play and recreation for all ages, while supporting exterior programming opportunities for the family.

M Front Porch

Urban amenities repurpose the plaza space, offering flexibility and adaptability to users enjoying this area, as well as linking the MSA with Eau Claire Plaza Well-It, with flexible seating. It is a space that can accommodate year-round programming.

N Overlook

An accessible overlook is a landmark feature of the area, providing a unique vantage point for observing the plaza activity. This aerial element offers a variety of play opportunities including a large slide.

O Forest

A treed backdrop enhances the existing buffer between the plaza and the adjacent residential complex, while also providing informal natural play opportunities.

Lighting Intent

- Pedestrian scale pole lighting to provide ambient light levels for safety/visibility.
- String lights provide accent lighting.
- Water jets and gateways are lit with programmable accent lighting.

Eau Claire Plaza: Play Area

Calgary Planning Commission Agenda Item: 7.3.1

Riverside Terraces

- Ice skating
- Snow Sculpture Displays / Display
- Running / Walking Group Meet-Up
- Photography

Promenade

- Light Installation
- Walkways / Cycle-Connection to Eau Claire Promenade
- Running / Walking Group Meet-Up
- Winter Art Walk

Children's Plaza

- Snowman Building
- Scavenger Hunts
- Play in the snow
- Winter Nature Walk

Market Street

- Seasonal Holiday Market
- Pedestrian Connection to Eau Claire Promenade
- Historical Tours
- Running / Walking Group Meet-Up
- Winter Food Trucks

Central Green

- Snow Building Lessons
- Winter Lighting Installation
- Skating

Urban Podium

- Temporary Hot Beverage Concession
- Ice Pits
- Lighting Installation
- Seasonal Holiday Market
- Toy Shop
- Christmas tree decorations and sales

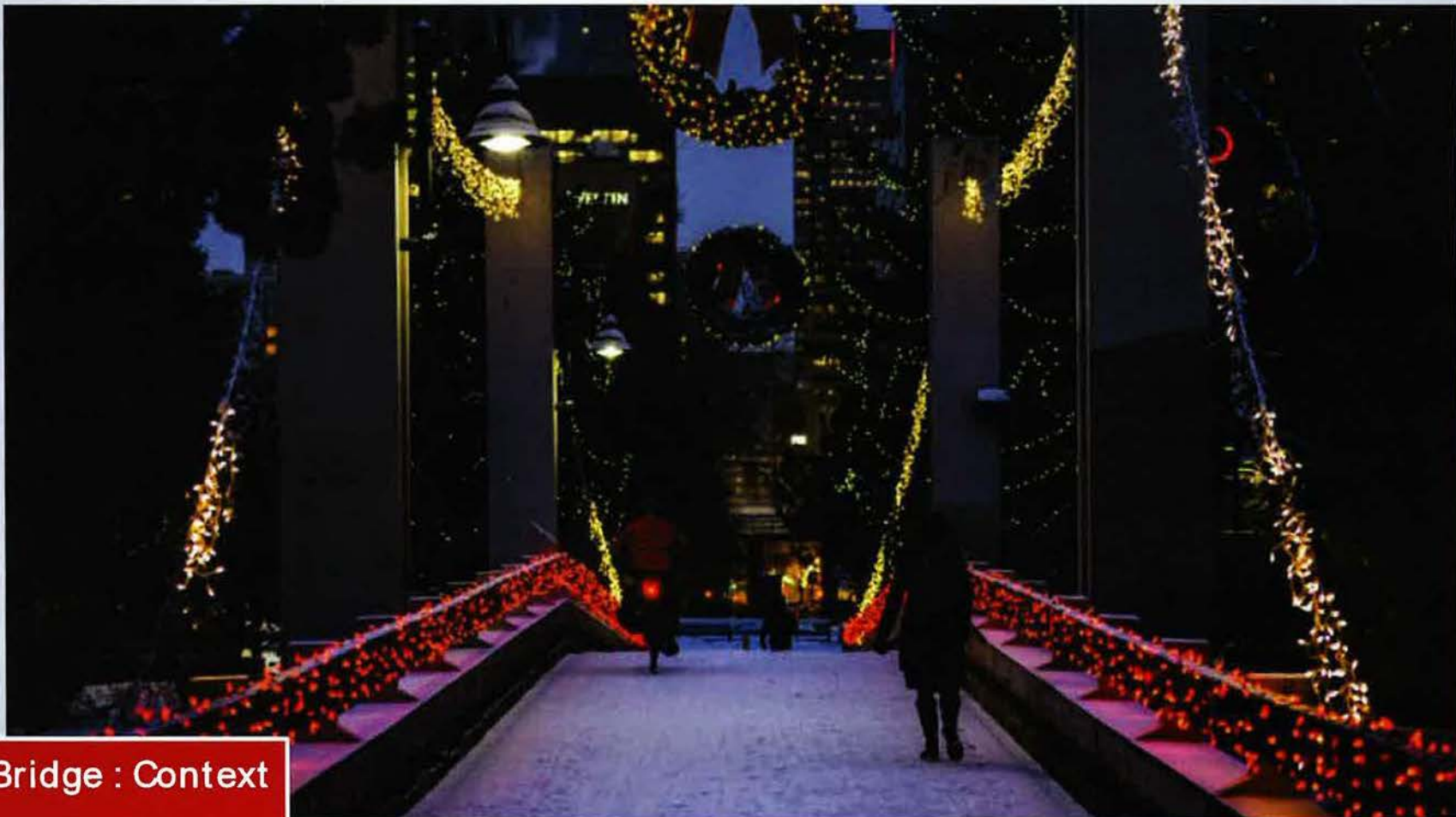
Eau Claire Plaza: Summary

Calgary Planning Commission
Agenda Item: 7.3.1



Jaipur Bridge : Context

Calgary Planning Commission
Agenda Item: 7.3.1



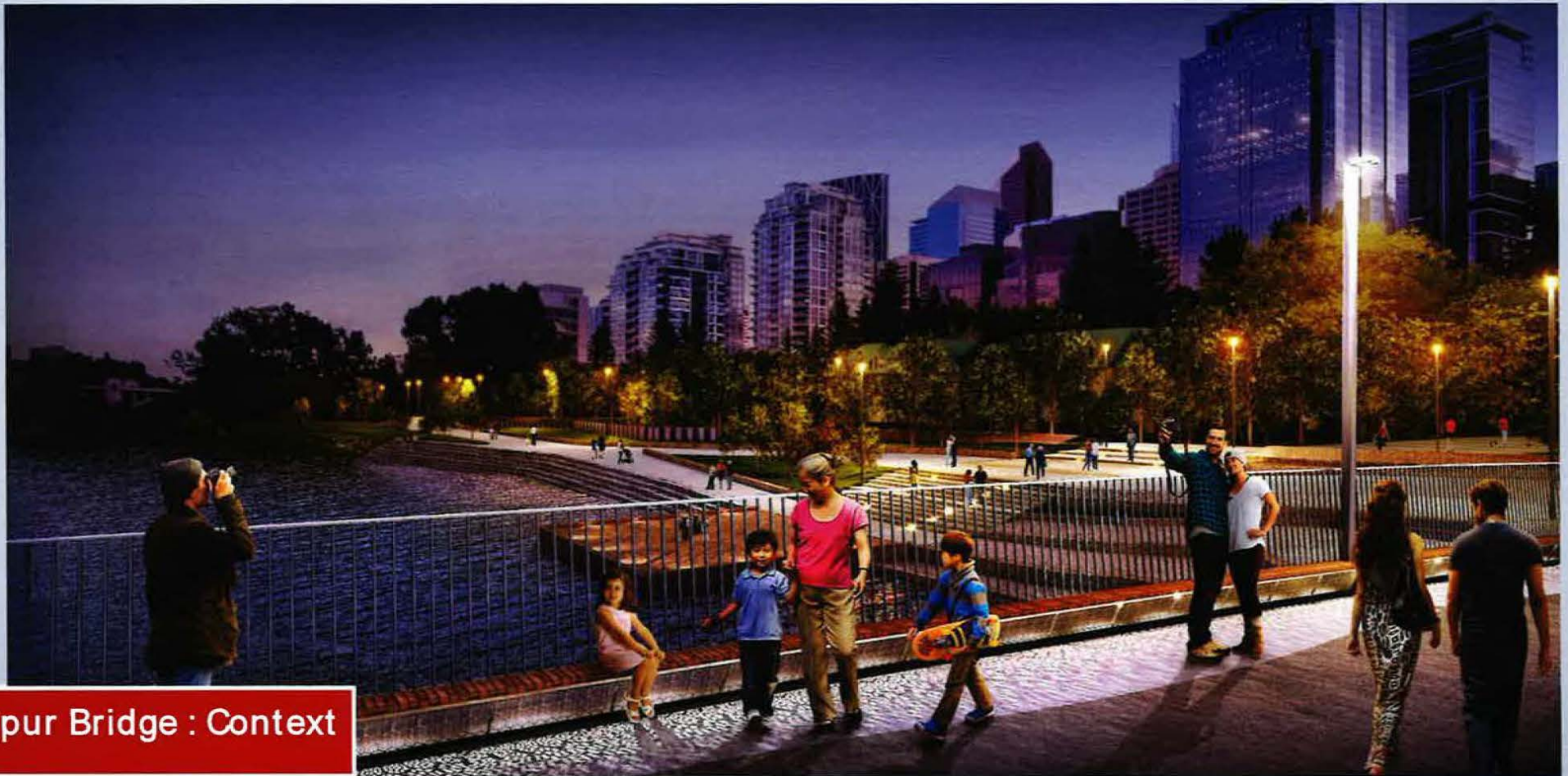
Jaipur Bridge : Context

Calgary Planning Commission
Agenda Item: 7.3.1



Jaipur Bridge : Context

Calgary Planning Commission
Agenda Item: 7.3.1



Jaipur Bridge : Context

Calgary Planning Commission
Agenda Item: 7.3.1

36

ADMINISTRATION RECOMMENDATION:
Calgary Planning Commission **RECEIVE AND ACCEPT**
this report for the Corporate record

Calgary Planning Commission
Agenda Item: 7.3.1

37

Supplementary Slides







Calgary Planning Commission
Agenda Item: 7.3.1



Program: Eau Claire Area Coordination

Calgary Planning Commission

Agenda Item: 7.3.1

Eau Claire Vision Themes (Future End State)						
A place to Gather		A place to Reflect		A place to Connect		A place to Explore
Eau Claire Program Execution Goals (During Design and Construction)						
 <p>Build resiliency* for the downtown area <small>*Social, cultural, economic and physical</small></p>	 <p>Improve connectivity with better access and circulation</p>	 <p>Optimize return on investment</p>	 <p>Support area vibrancy during and after construction</p>	 <p>Improve safety beyond the Eau Claire area</p>	 <p>Design a complete experience</p>	
<p>Program Mandate</p> <p>To provide a coordinated delivery of projects to the Eau Claire area that will balance program goals and the needs of residents, businesses and visitors, so that the required work is completed and disruption to the area is minimized.</p>						
Program Work Streams/Functions						
Communication/ Stakeholder Relations	Scheduling	Resourcing/Funding	Procurement	Design Continuity	Risk	Compliance/Legislation
What does it mean?						
Act as 'one window intake' to coordinate key stakeholder (Council and external) engagement and communications.	Identify work flow and reduce risk from interdependencies and schedule conflicts	Realize value management, opportunities for shared costs and budget overlaps.	Find efficiencies and mitigate risks in the procurement activities	Ensure that there is a consistent visual language that is currently expressed throughout the existing infrastructure, contributing to an overall sense of place.	Coordinate the identification, escalation and management of risks	Coordinate regulatory permitting, land leases and licenses
Projects/Initiatives						
Bridges - Jaipur & 2 nd Street	Centre Street Ramp Replacement	Eau Claire Promenade	Eau Claire Plaza	Sunnyside Flood Barrier	Greenline	

Program: Eau Claire Area Coordination

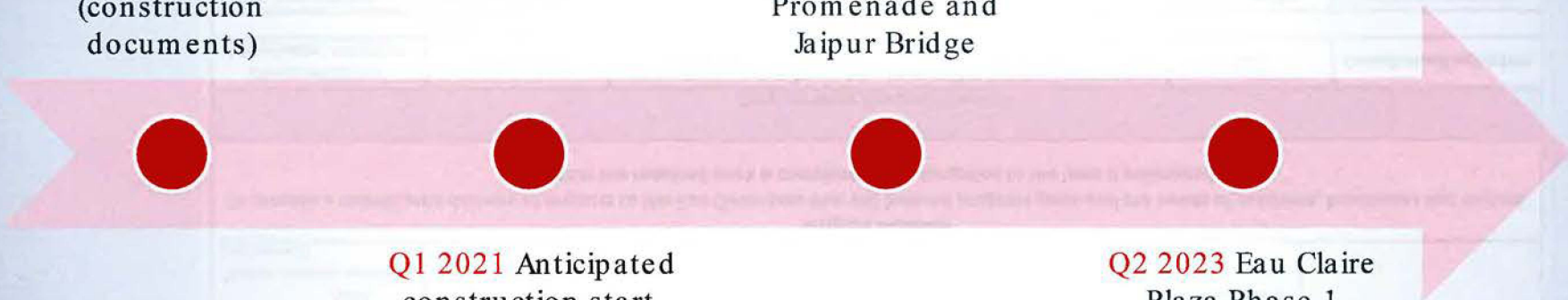
Calgary Planning Commission Agenda Item: 7.3.1

Q3 2020 Detail design complete (construction documents)

Q2 2023 Expected completion for Downtown Flood Barrier and Eau Claire Promenade and Jaipur Bridge

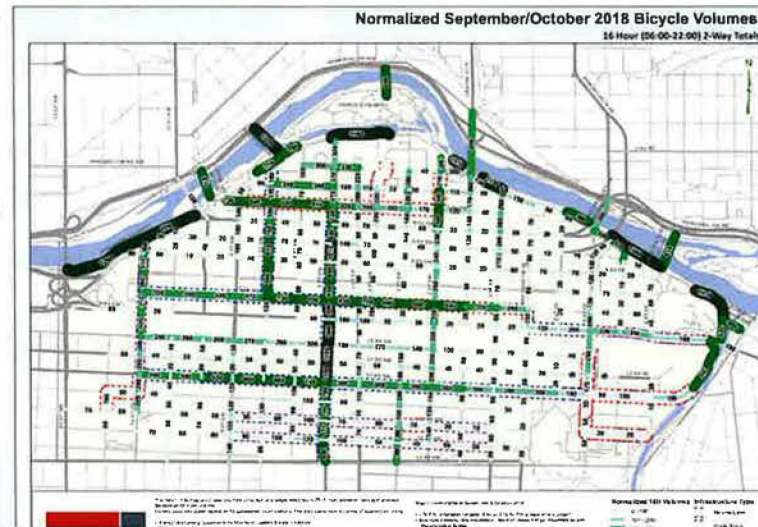
Q1 2021 Anticipated construction start

Q2 2023 Eau Claire Plaza Phase 1 construction to start



Program: proposed schedule

Calgary Planning Commission Agenda Item: 7.3.1



Calgary Planning Commission Agenda Item: 7.3.1

Calgary

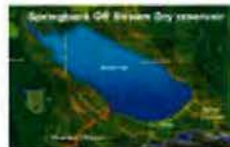


Flood Resiliency Strategy: Approved by Council 2017

'Core' of Structural Flood Mitigation

Elbow River

Springbank Reservoir
+ Increasing size of
Glenmore gates



Bow River

New upstream reservoir (BRWG)
+ Refined Upstream Dam Operations
+ Community scale flood barriers
+ Drainage system improvements



Structural Measures to be integrated with:

- + Refined forecasting, monitoring, communication of risk
- + Continual refinement of Emergency Response / Preparedness
- + Refined land use policy, development and building regulation
- + Programs and Risk Education for citizens, business, owners
- + Insurance and other financial mechanisms

Context: resiliency

Calgary Planning Commission

Agenda Item: 7.3.1

43

Principles

For the City + Community

- Accommodate all users for all of Calgary
- Connect people to the Bow River
- Build a vibrant centre-city riverfront
- Design a diversity of social spaces for mental and physical well-being

Active + Multi-modal

- Provide a continuous, safe and accessible riverfront promenade
- Incorporate strategies for year-round healthy, active lifestyles
- Designate efficient pathways for safe alternate modes of transportation

Environmental Responsibility

- Preserve the natural environment by protecting most existing trees and riparian vegetation
- Achieve multiple cost benefits through durable and beautiful design solutions

Flood Protection + Resilience

- Integrate flood protection into the public realm improvements
- Increase resilience for Eau Claire, the Downtown Core and future infrastructure projects

Downtown Flood Barrier and Promenade : Principles

Calgary Planning Commission

Agenda Item: 7.3.1

Design Elements

Pavers

- UniLock
- Promenade Plank Paver
- Size, Finish, Colour:
 - 200mm x 600mm x 100mm, Smooth Premier, Opal
 - 300mm x 600mm x 100mm, Smooth Premier, Opal
 - 300mm x 600mm x 100mm, Smooth Premier, Steel Grey
 - 300mm x 600mm x 100mm, Il Campo, Granite Blend
 - 300mm x 600mm x 100mm, Il Campo, Dark Charcoal



Sheet Pile

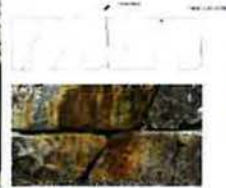


Seating

- Custom
- Wood: Yellow Balau
- Metal: Black Powdercoat



Cliffstone



Lighting



Downtown Flood Barrier and Promenade : Palette

Calgary Planning Commission Agenda Item: 7.3.1



Downtown Flood Barrier and Promenade : Palette

Calgary Planning Commission

Agenda Item: 7.3.1

PLANT PALETTE - INDICATIVE SPECIES

CANOPY TREES

to provide shade, moderate heat island effect, manage stormwater, define spaces, and create pedestrian scale and human scale signatures, also integrate nature with the urban fabric.



Brandon Elm



Drogmore Linden



Ho Buckeye



Bur Oak

SCREENING TREES

to supplement existing residential buffers.



White Spruce



Colorado Spruce

VEGETATED NATURALIZED AREAS

to provide natural spaces and define spaces, manage stormwater, enhance pedestrian experience, maintain clean sightlines, and integrate nature with the urban fabric.



Ivory Halo Dogwood



Blue Fox Willow



Switch Grass



Avalanche Reed Grass

TURF

to provide softscape for programming, manage stormwater, act as a counterpoint to large podium heights, and offers an inviting space for casual "parklike" functions in an urban setting.



Echinacea



Liatris

Eau Claire Plaza: Palettes

Calgary Planning Commission Agenda Item: 7.3.1

PAVING MATERIALS



CIP CONCRETE - PROMENADE | PLAY
 (OUTLAY STAINING)
 P.1534 SANDSTONE
 P.1535 SANDSTONE



GRANITE PAVERS 1 - PODIUM
 1000mm x 400mm
 COLOUR: BLACK
 FINISH: WATERFALL / SANDSTONE
 FACE: LEOPARD EDGE



GRANITE PAVERS 2 - WATER FEATURE
 1000mm x 400mm
 COLOUR: BLACK
 FINISH: FLAMED / BRUSHED



GRANITE COBBLESTONE - PODIUM EDGE
 100mm x 100mm
 COLOUR: LIGHT GREY
 FINISH: BUFFED



PRECAST CONCRETE PAVERS - PROMENADE



TIMBER BOARDWALK



TREE TRENCH / TREE GRATE



TRUNCATED DOMES (AS NECESSARY)

SITE FURNISHINGS : FIXED + MOVEABLE



FIXED BENCHES
 MANUFACTURER: STEELITE
 MODEL: DUTCH



FIXED HARVEST TABLES
 MANUFACTURER: STEELITE
 MODEL: DUTCH



FIXED CLUSTER SEATING
 MANUFACTURER: STEELITE
 MODEL: DUTCH



TABLES + CHAIRS
 MANUFACTURER: JARDINERIE FORTIN
 MODEL: JARDINERIE



PARASOLS
 MANUFACTURER: JTD
 MODEL: JTD



WASTE RECEPTACLES
 MANUFACTURER: SMCITE
 MODEL: WASTE RECYCLING / COMPOST



BIKE RACKS
 MANUFACTURER: SMCITE
 MODEL: (P) 1000



FIXED SHADE STRUCTURE
 MANUFACTURER: SMCITE
 MODEL: (P) 1000



LOUNGE CHAIRS
 MANUFACTURER: JTD
 MODEL: JTD

Eau Claire Plaza: Palettes

Calgary Planning Commission Agenda Item: 7.3.1

SITE LIGHTING



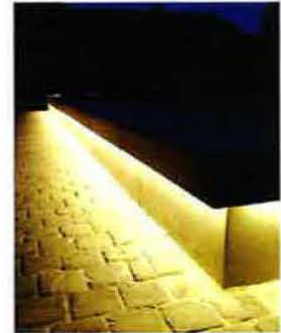
FESTIVAL LIGHTS
LOCATION: URBAN PLAZA



PEDESTRIAN LIGHTS
LOCATION: PROMENADE MARKET STREET



ACCENT
LOCATIONS: GATEWAY | PLAY



ACCENT
LOCATIONS: POOLUM



ACCENT
LOCATIONS: RIVERSIDE TERRACES | PLAY



STRING LIGHTS
LOCATIONS: PROMENADE | PLAY

Eau Claire Plaza: Palettes