

Green Line LRT Long Term Vision Executive Summary and Example Station Opportunity Briefs



"GREEN LINE LRT LONG TERM VISION: 160 AVENUE N TO SETON" EXECUTIVE SUMMARY

Over one million new residents will be welcomed to Calgary and over 500,000 new jobs will be created by 2076. Providing fast, frequent, reliable transit for Calgarians as the city grows, is essential to keep Calgarians moving. The Green Line LRT is Calgary's next light rail transit (LRT) line, and one of The City's top infrastructure priorities.

The "Green Line LRT Long Term Vision: 160 Avenue N to Seton SE" provides a guide for future investments that demonstrates The City's commitment to providing Calgarians with more ways to move around the City and more choices of where they live, work and play.

The long term vision document for the Green Line will provide greater detail on:

- The need for the Green Line
- The benefits of the Green Line for Calgary and its citizens now and into the future
- The guiding principles for integrating the Green Line with Calgary's communities
- The four-layered approach of planning the Green Line
- How the Green Line integrates with the current transportation network
- The alignment and station locations
- Opportunities for future development and investment
- An overview of the capital cost estimates
- A strategy for realizing the full vision of the Green Line



"Once the full alignment is built, the Green Line will serve in the range of 90,000 -240,000 trips per day, connect 10 transit oriented development stations, and provide an affordable service for all Calgarians."

Green Line LRT Long Term Vision Executive Summary and Example Station Opportunity Briefs

16 AVENUE N STATION



Note: Views are aspirational and do not necessarily represent final product



INITIAL STATE (2015)		OPENING DAY		LONG TERM VISION (2043)	
Population	6,250	Population	8,100	Population	13,400
Jobs	3,250	Jobs	4,050	Jobs	5,050
		LRT riders	3,600	LRT riders	5,750

Note: Population and jobs numbers are within 10 mins walk of station

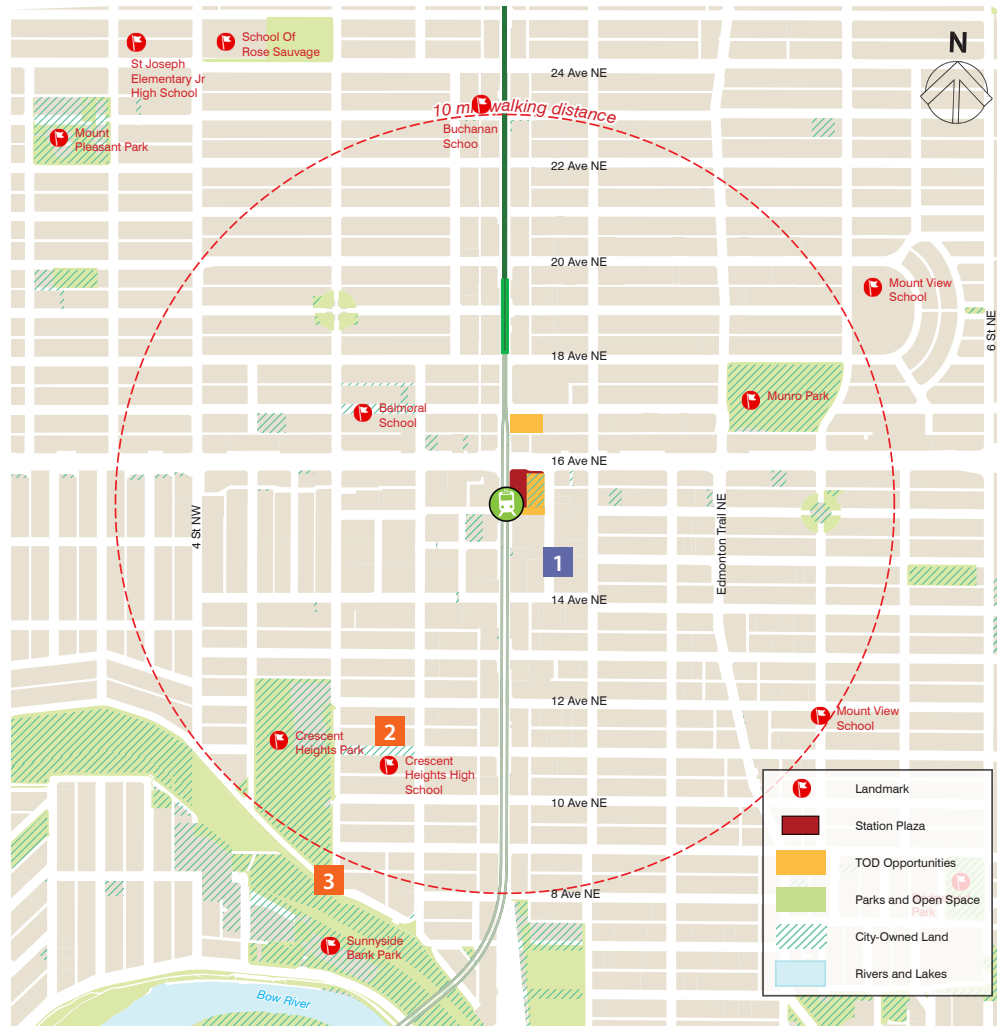


TRANSIT BENEFITS

TRANSIT BENEFITS		STATION ACCESS PRIORITIES	
Transit hub	Yes		
Priority Transit Network Connection	Yes		
Existing or Future Regional Connections	No		
Park and Ride	No		
Distance from Downtown/Centre City	2 km		

Green Line LRT Long Term Vision Executive Summary and Example Station Opportunity Briefs

16 AVENUE N STATION



EXISTING HIGHLIGHTS

1 TOD highlight

1 City Shaping highlight

1 Transit highlight

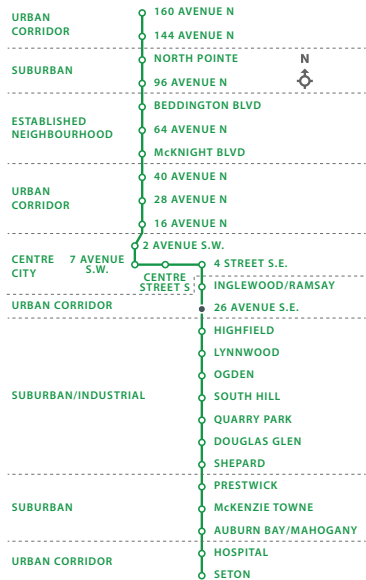
- 1 Culturally diverse retail
- Major activity corridor as identified in MDP
- Part of Main Streets redevelopment program
- Large Parcels of City of land at the corner of 16th Avenue and Centre Street
- 2 Crescent Heights High School
- 80 affordable housing units
- Variety of community services and programs including Seniors' housing
- 3 school sites nearby
- Connection to Route 3, 300 BRT, 301 BRT and crosstown route, Regional Transit Connection - Airdrie Ice

FUTURE OPPORTUNITIES

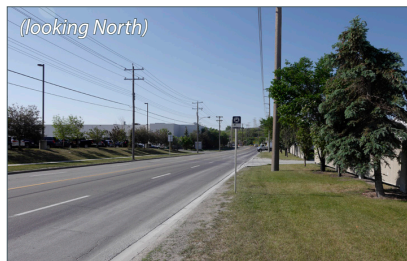
- Identified as a high potential, high density TOD site within Stage 1 construction
- Integrated open space plaza
- 3 Access to Crescent Road lookout and McHugh Bluffs
- Planned sport field and park upgrades, Renfrew Recreational Facility redevelopment
- Affordable housing for 2,400 people
- Transit Hub with 4-8 routes with 20-30 buses/peak hour, connection to North Crosstown BRT

Green Line LRT Long Term Vision Executive Summary and Example Station Opportunity Briefs

26 AVENUE SE STATION



Note: Views are aspirational and do not necessarily represent final product



INITIAL STATE (2015)		OPENING DAY		LONG TERM VISION (2043)	
Population	400	Population	3,400	Population	8,650
Jobs	3,100	Jobs	3,700	Jobs	6,100
		LRT riders	700	LRT riders	1,750

Note: Population and jobs numbers are within 10 mins walk of station



TRANSIT BENEFITS

Transit hub	Yes	STATION ACCESS PRIORITIES	
Priority Transit Network Connection	No		
Existing or Future Regional Connections	No		
Park and Ride	No		
Distance from Downtown/Centre City	3 km		

Green Line LRT Long Term Vision Executive Summary and Example Station Opportunity Briefs

26 AVENUE SE STATION



EXISTING HIGHLIGHTS

1 TOD highlight

1 City Shaping highlight

1 Transit highlight

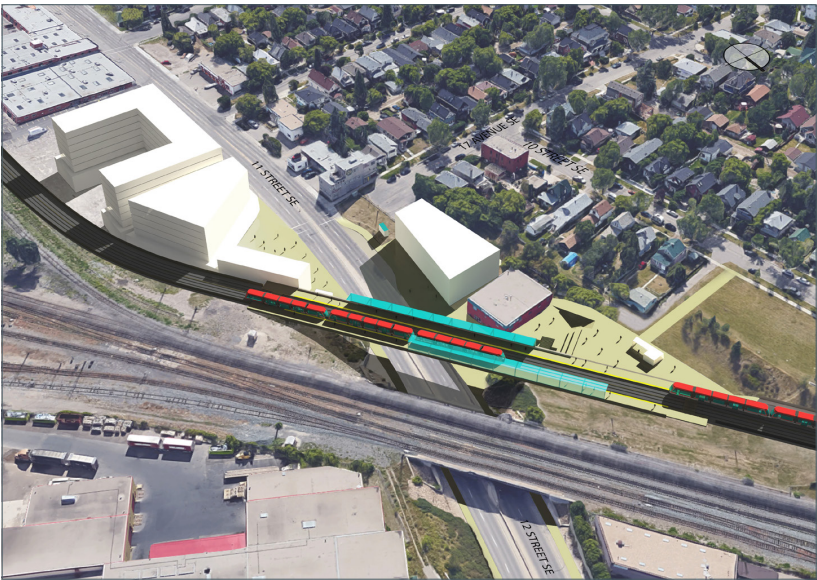
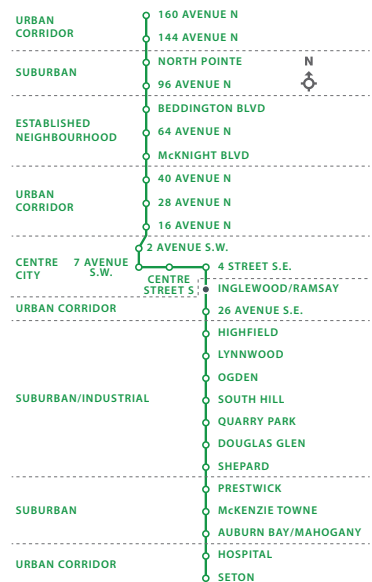
- 4 Inglewood/Ramsay ARP underway
- 4 Industrial Employment nearby
- 1 Popular farmers market nearby
- 2 Civic services including Calgary Police Service, Animal and Bylaw Services and Water Services Centre
- 3 Loose Moose Theatre Company
- 2 schools nearby
- Connection to BRT Route 302 and transit service from surrounding communities

FUTURE OPPORTUNITIES

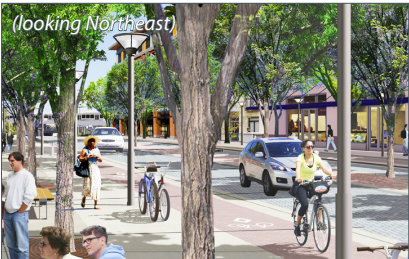
- 4 11 Street SE streetscape improvements
- Opportunity to leverage large city owned land that will include open space near station
- Opportunity to integrate with employment plans around heavy rail
- Potential to redevelop brownfield lands
- Enhanced pathway connections
- Affordable housing for 1,700 people
- Transit connection with less than 4 routes with less than 20 buses/peak hour

Green Line LRT Long Term Vision Executive Summary and Example Station Opportunity Briefs

INGLEWOOD/RAMSAY STATION



Note: Views are aspirational and do not necessarily represent final product



INITIAL STATE (2015)		OPENING DAY		LONG TERM VISION (2043)	
Population	2,900	Population	6,400	Population	9,550
Jobs	2,450	Jobs	2,950	Jobs	3,400
		LRT riders	3,350	LRT riders	4,600

Note: Population and jobs numbers are within 10 mins walk of station



TRANSIT BENEFITS

		STATION ACCESS PRIORITIES
Transit hub	Yes	
Priority Transit Network Connection	Yes	
Existing or Future Regional Connections	Yes	
Park and Ride	No	
Distance from Downtown/Centre City	2.5 km	

Green Line LRT Long Term Vision Executive Summary and Example Station Opportunity Briefs

INGLEWOOD/RAMSAY STATION



EXISTING HIGHLIGHTS

1 TOD highlight

1 City Shaping highlight

1 Transit highlight

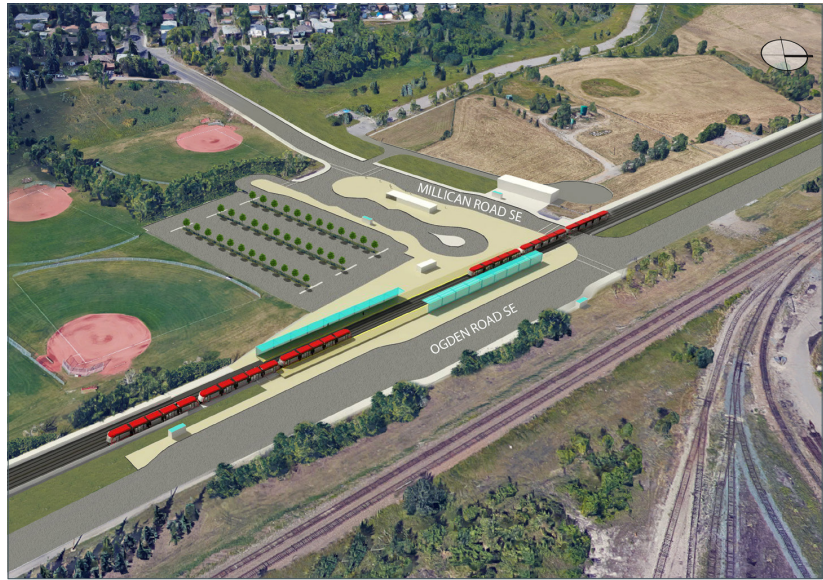
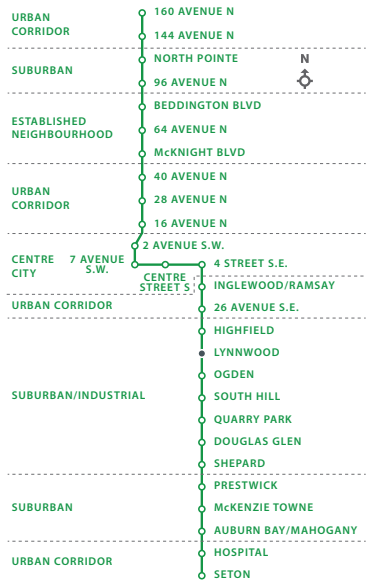
- Inglewood/Ramsay ARP underway
- 1 Historic 9 Avenue SE Main Street with retail, commercial, office and residential uses
- Inglewood Bird Sanctuary, Pearce Estate Park, Bow Habitat Station nearby
- 2 Direct access to St. George's Island and Calgary Zoo (10 minute walk)
- 160 affordable housing units
- 3 Inglewood Aquatic Centre - 62,000 visits yearly
- Inglewood Community Centre, outdoor rink and Festival Hall nearby
- Local programs and services including YWCA
- Connection to BRT Routes 302 and 305, transit service from surrounding communities

FUTURE OPPORTUNITIES

- Identified as a high potential, high priority TOD area including redevelopment of Lilydale site
- Creation of a High Street along 11 Street SE
- Affordable housing for 1,500 people
- Potential new recreation facility site, Mills Park and Jack Long park upgrades
- Planned multi-use site including Fire Hall, housing and affordable housing
- Transit Hub with 4-8 routes, 20-30 buses/peak hour
- Connection to 17 Avenue SE BRT, Regional Transit Connections

Green Line LRT Long Term Vision Executive Summary and Example Station Opportunity Briefs

LYNNWOOD STATION



Note: Views are aspirational and do not necessarily represent final product



INITIAL STATE (2015)		OPENING DAY		LONG TERM VISION (2043)	
Population	4,450	Population	5,500	Population	6,450
Jobs	500	Jobs	800	Jobs	950
		LRT riders	1,450	LRT riders	1,650

Note: Population and jobs numbers are within 10 mins walk of station



TRANSIT BENEFITS

TRANSIT BENEFITS		STATION ACCESS PRIORITIES	
Transit hub	Yes		
Priority Transit Network Connection	No		
Existing or Future Regional Connections	No		
Park and Ride	Yes		
Distance from Downtown/Centre City	7 km		

Green Line LRT Long Term Vision Executive Summary and Example Station Opportunity Briefs

LYNNWOOD STATION



EXISTING HIGHLIGHTS

1 TOD highlight

1 City Shaping highlight

1 Transit highlight

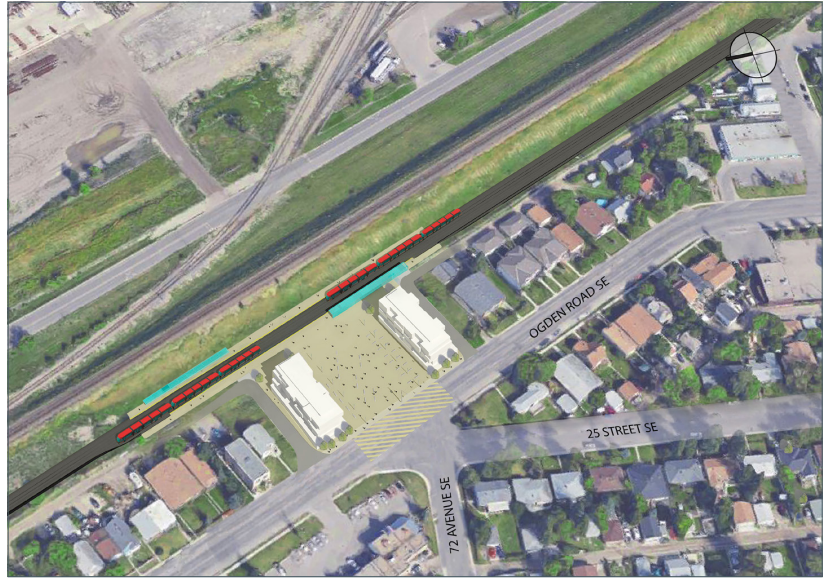
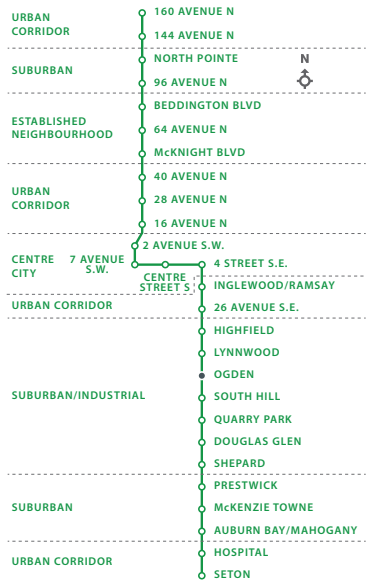
- Millican-Ogden ARP underway
- 1 Manufacturing industries and CP lands nearby
- 2 Millican Ogden Community Association nearby
- 100 Affordable Housing Units
- Millican/Ogden local community programs and services nearby, for example Ogden House Senior Citizen's Club
- 3 Pop Davies Park - 24,000 visits yearly, Jack Setters arena and outdoor pools nearby
- 2 school sites nearby
- Connection to transit service from surrounding communities

FUTURE OPPORTUNITIES

- Enhanced pathway connections
- Access to new employment lands
- Redevelopment of former landfill site
- Plaza connecting station and Pop Davies Park
- Enhanced pathways connections to Bow River Pathway system
- Affordable housing for 1,000 people
- Planned Pop Davies park upgrades
- Transit Hub with 4-8 routes with 20-30 buses/peak hour, Park and Ride

Green Line LRT Long Term Vision Executive Summary and Example Station Opportunity Briefs

OGDEN STATION



Note: Views are aspirational and do not necessarily represent final product



INITIAL STATE (2015)		OPENING DAY		LONG TERM VISION (2043)	
Population	3,400	Population	5,800	Population	7,950
Jobs	1,550	Jobs	2,200	Jobs	2,500
		LRT riders	1,300	LRT riders	1,750

Note: Population and jobs numbers are within 10 mins walk of station



TRANSIT BENEFITS

TRANSIT BENEFITS		STATION ACCESS PRIORITIES	
Transit hub	Yes		
Priority Transit Network Connection	No		
Existing or Future Regional Connections	No		
Park and Ride	No		
Distance from Downtown/Centre City	8 km		

Green Line LRT Long Term Vision Executive Summary and Example Station Opportunity Briefs

OGDEN STATION



EXISTING HIGHLIGHTS

1 TOD highlight

1 City Shaping highlight

1 Transit highlight

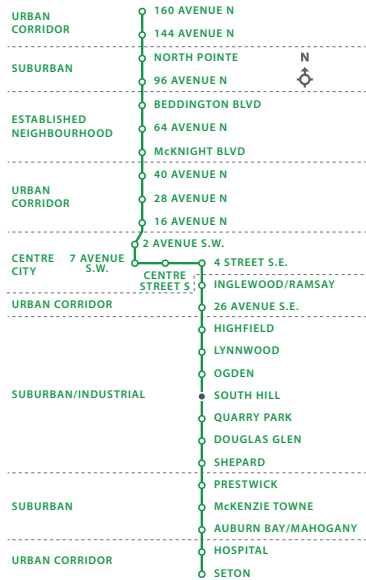
- Millican-Ogden ARP underway
- Mixed use community with diverse housing choices
- 1 Connections to industrial employers for example CP Rail Yards
- 140 Affordable Housing Units
- 2 Ogden Lacrosse site and George Moss Park - 300 hours bookable playfields per year nearby
- "Oggy" public art
- 3 Home of Victory Outreach Social Housing
- Connection to BRT Route 302, major crosstown route and transit service from adjacent communities

FUTURE OPPORTUNITIES

- Identified as a high potential TOD site including redevelopment of adjacent lands
- Grid street pattern enhances multi-modal connectivity
- Integrated station plaza envisioned
- Community activity centre as identified in MDP
- Affordable housing for 1,200 people
- Planned upgrades to Fire Station #9, as well as a Regional Recreational Facility envisioned
- Enhanced pathway connections and planned upgrades to George Moss Park
- Transit connection with less than 4 routes with less than 20 buses/peak hour

Green Line LRT Long Term Vision Executive Summary and Example Station Opportunity Briefs

SOUTH HILL STATION



Note: Views are aspirational and do not necessarily represent final product



INITIAL STATE (2015)		OPENING DAY		LONG TERM VISION (2043)	
Population	500	Population	4,200	Population	9,350
Jobs	1,300	Jobs	1,700	Jobs	2,600
		LRT riders	2,450	LRT riders	3,550

Note: Population and jobs numbers are within 10 mins walk of station

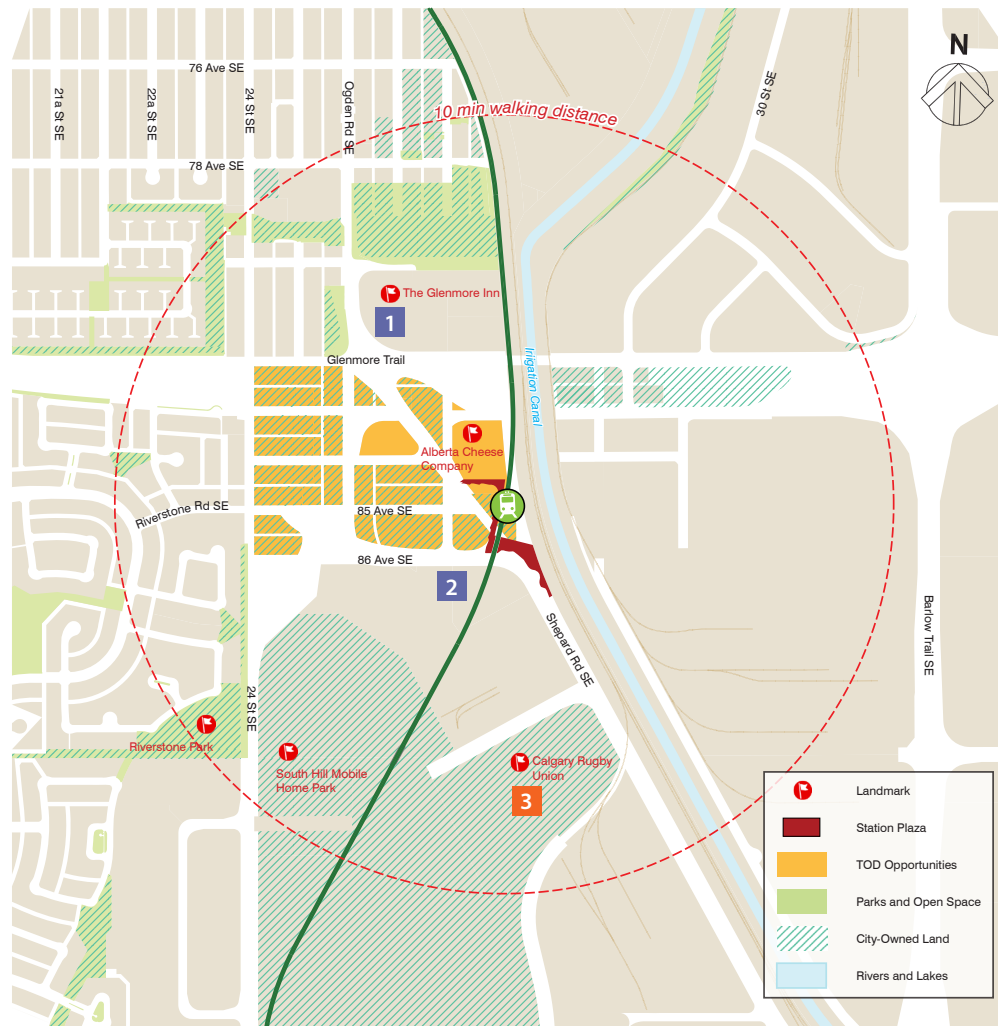


TRANSIT BENEFITS

Transit hub	Yes	STATION ACCESS PRIORITIES 			
Priority Transit Network Connection	No				
Existing or Future Regional Connections	No				
Park and Ride	No				
Distance from Downtown/Centre City	9.5 km				

Green Line LRT Long Term Vision Executive Summary and Example Station Opportunity Briefs

SOUTH HILL STATION



EXISTING HIGHLIGHTS

1 TOD highlight

1 City Shaping highlight

1 Transit highlight

- 1 Retail, office and hotel complex nearby
- 2 South Hill Station Area Plan underway
- 2 Access to Shepard Industrial
- 2 Significant amount of City owned land within 10 minute walk
- 3 Calgary Rugby Union nearby
- 27 Affordable housing units
- Connection to transit service from surrounding community

FUTURE OPPORTUNITIES

- Major redevelopment of land north of Glenmore Trail
- Medium potential for TOD redevelopment
- Integrated transit plaza and mixed use development envisioned
- Enhanced pathway connection to Caribou Park
- Planned indoor recreation facility nearby
- Affordable housing for 1,800 people
- Major Transit Hub with at least 8 routes and 30 buses/peak hour
- Primary Transit Network Connection, Regional Transit Connections