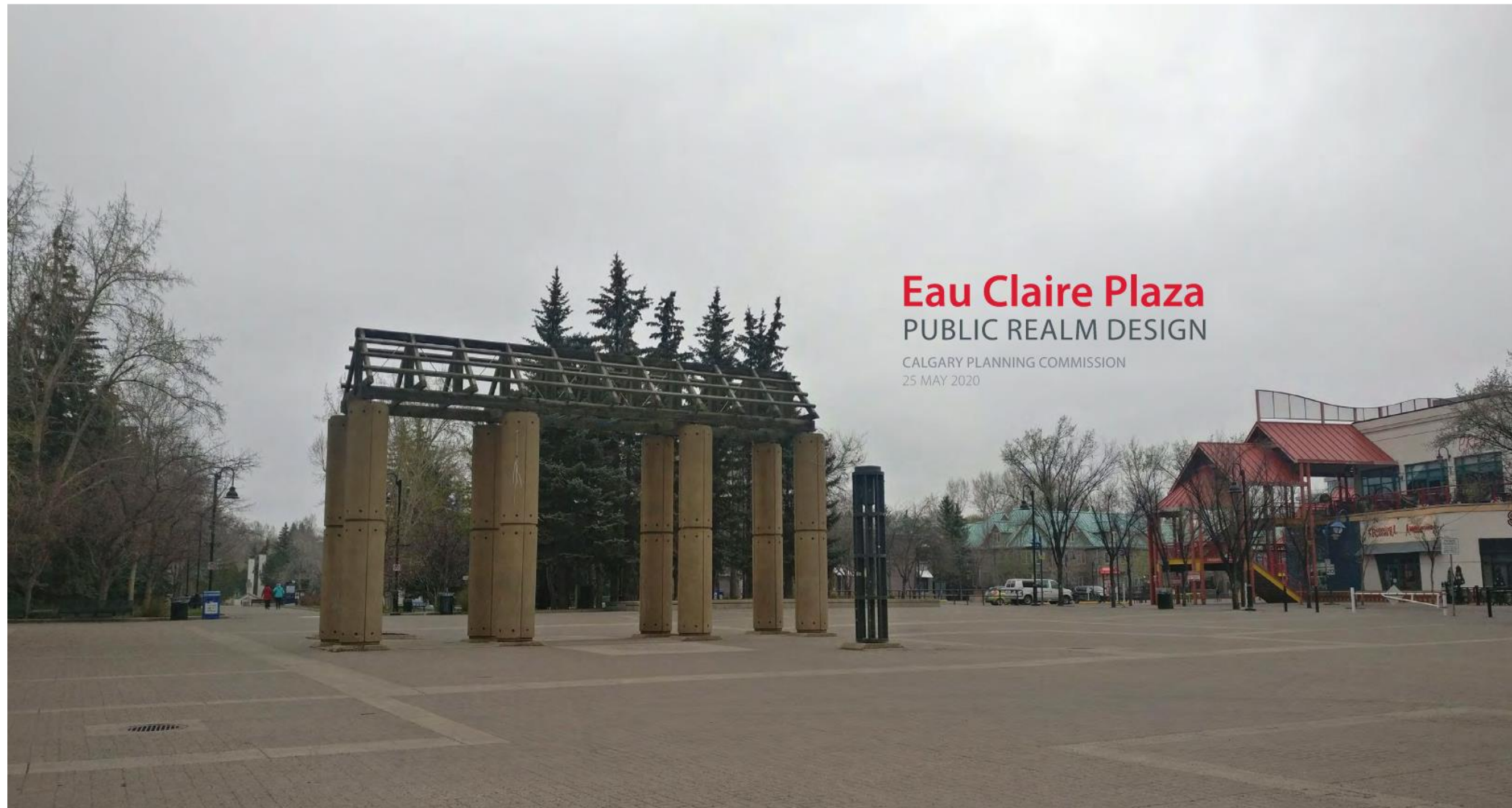
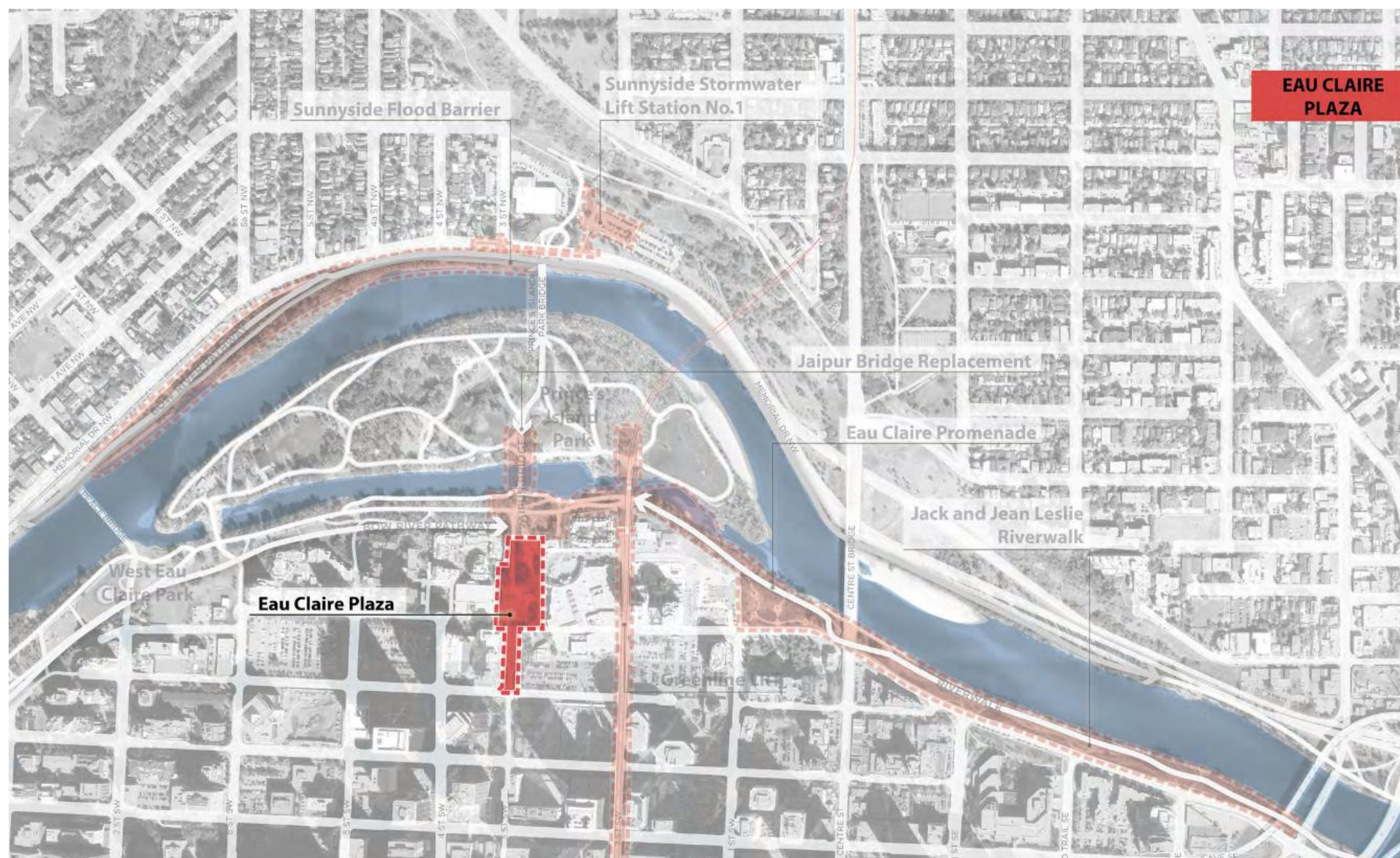


Eau Claire Plaza Renderings



Eau Claire Plaza Renderings

LOCATION PLAN + CONTEXT



Eau Claire Plaza Renderings

EAU CLAIRE PLAZA IS AN ICONIC PUBLIC SPACE that connects the vibrant mixed-use Eau Claire community, the Bow River Pathway, and Prince's Island; this is a place for neighbours, Calgarians, and visitors alike.

The design is grounded in history, with adaptable and engaging spaces that support social and cultural gatherings at all scales, throughout the year.

VISION

Eau Claire Plaza Renderings

For the Community and the City

A Vibrant Plaza

animated year-round
with programming and
events, large and small

A Flexible Plaza

with comfortable spaces and
quality amenities that embrace
everyday community use

Resilient and Responsible

A Green Plaza

which exemplifies best practices
for sustainable design and
uses high quality materials

An Authentic Plaza

honouring the natural, cultural
and social heritage of the site

Active and Multi-Modal

An Integrated Plaza

with clear connections to
pathways, local amenities, transit,
and the adjacent community

An Accessible Plaza

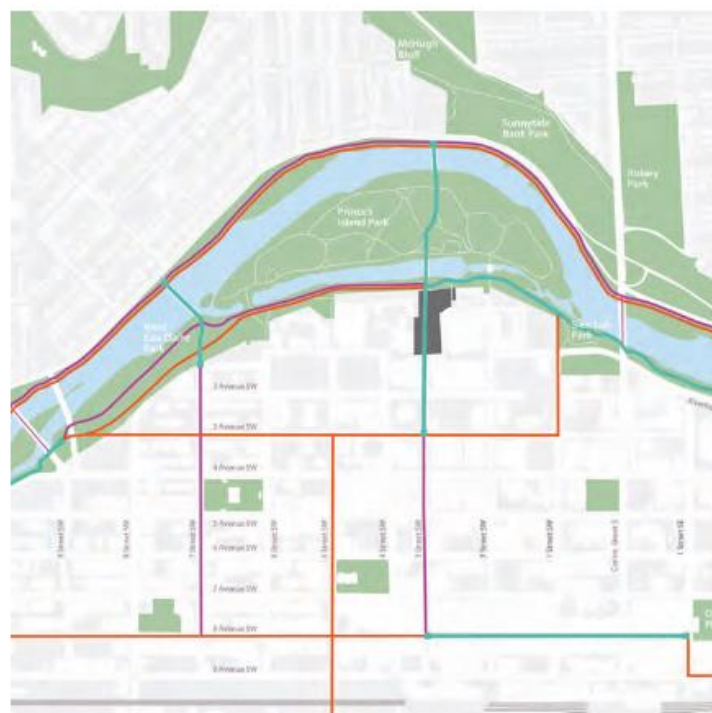
with opportunities for
all ages + abilities

STRATEGIES | PROJECT GOALS

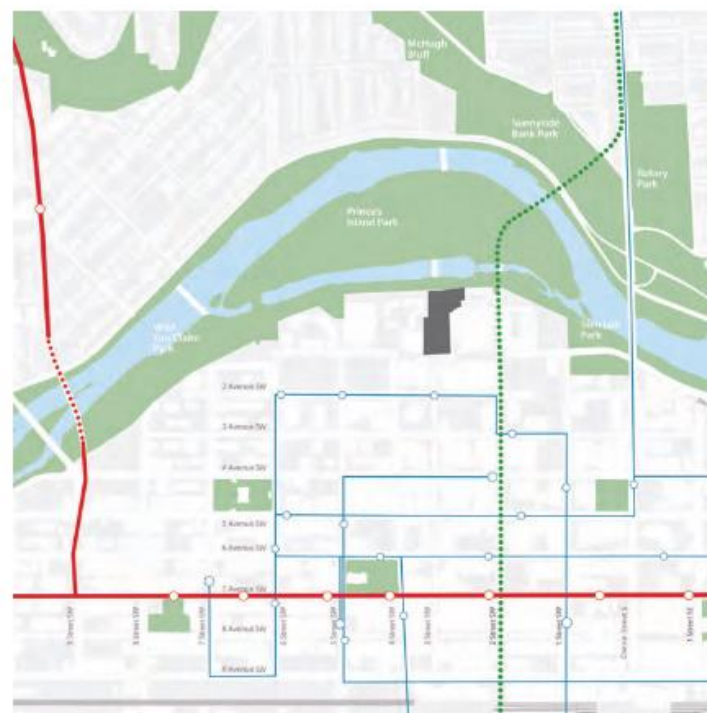
Eau Claire Plaza Renderings

MULTI-MODAL CONNECTIVITY

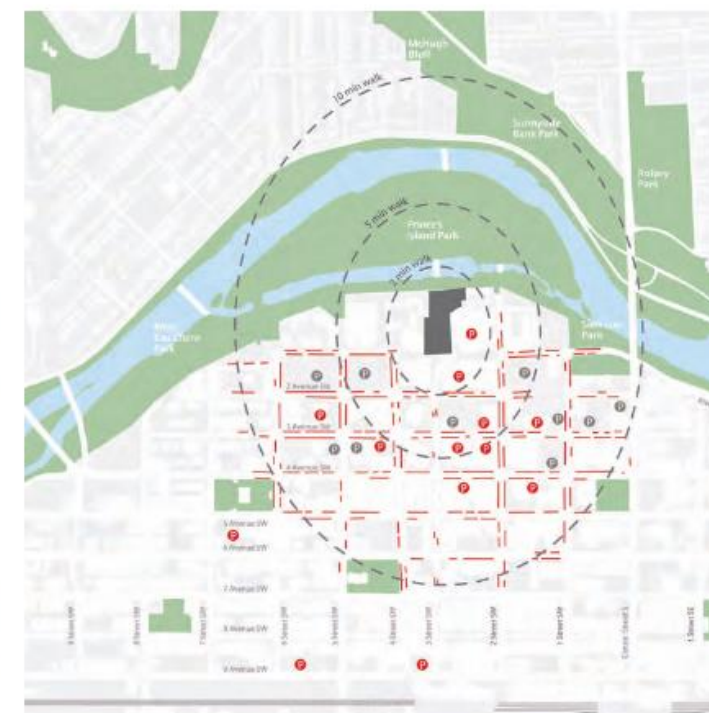
Active Transportation



Transit



Parking



- Street Parking
- Surface Parking
- Indoor Parking
- Green Line (Future)
- LRT Route
- BRT / Bus Route
- Transit Stop
- Pedestrian Route
- Bicycle Route
- Shared Route

Eau Claire Plaza Renderings

LANDSCAPE PLAN

- Character Areas**
- 1 Urban Plaza
 - 2 Central Green
 - 3 Riverside Terraces
 - 4 Market Street
 - 5 Promenade
 - 6 Play



Eau Claire Plaza Renderings

CHARACTER AREAS : URBAN PLAZA



STAGE FOR THE CITY

The Urban Plaza is the formal gathering space of Eau Claire Plaza, an extension of the urban fabric that is specifically designed to be flexible and adaptable.

A Gateway

A bold, sculptural arrangement of heavy timbers – celebrating the area’s lumber history – marks the Plaza’s urban edge. This is an Eau Claire Plaza landmark, visible from afar, that draws people in and functions as a natural meeting place.

B Podium

The podium is a prominent feature, elevated above the surrounding plaza at the north end, and flush with its surroundings at the south end. Its raised edges offers informal seating, while the extensive hard surface is fully accessible and scaled to host a variety of large programmed events. The podium is flanked with canopy trees to provide shade and visual interest. The podium is well lit, and offers year-round opportunities, day and night.

C Stage

In lieu of a formal main stage, the podium is scaled to accommodate temporary stages of various sizes to allow for flexibility and adaptability. In addition, the north end of the podium serves as an informal stage above the Central Green.

Lighting Intent

- Large festival/event lights provide illumination throughout podium space; fixtures are dimmable/programmable to provide flexibility for event-specific lighting.
- Podium edge and gateway are lit with low level accent lighting.



Eau Claire Plaza Renderings

CHARACTER AREAS : CENTRAL GREEN



FLEXIBLE & DYNAMIC

The Central Green marks the dynamic threshold between the natural elements of the Bow River and the urban elements of the centre city. This area is defined by dramatic folds in landform and outcrops of stone, representing the collision of these two forces.

D Manicured Lawn

Sunny in both winter and summer, the lawn is a flexible space that serves as a soft, green counterpart to the Urban Plaza's podium. It is easily adaptable for a wide range of events, activities, and casual uses.

E Landform

The collision of urban + nature is expressed in a dramatic inclined landform that serves as a playful extension of the manicured lawn. This slope, with stacked stone edges, provides opportunities for a natural amphitheatre and winter tobogganing. The high point of the slope will offer spectacular views to the river, as well as to the centre city.

O Relocated Olympic Monument

Lighting Intent

- Perimeter lighting associated with Promenade and Market Street provides ambient light.



Eau Claire Plaza Renderings

CHARACTER AREAS : RIVERSIDE TERRACES



PLAYFUL TRANSITION

The Riverside Terraces extend the plaza all the way to the Bow River, integrating the Plaza with the Bow River Pathway and Prince's Island and affording users an opportunity to touch the water. The undulating layers are a final expression of the urban environment's collision with nature, supporting a variety of active and passive uses within its folds. The terraces allow for lateral movement on the site; pathways, boardwalks, trails, and water features all provide links between Market Street and the Promenade.

F Naturalized Margins

A plant palette, inspired by the native regional landscape, introduces nature into the site, creating soft and textured layers within the terraces. Both natural and manicured expressions of the regional landscape provide opportunities to gather and linger in the sun and in the shade, as the sun moves across the sky throughout the day.

G Water Feature

A series of depressions within the landscape folds host spray jets, a dynamic urban water feature that contrasts with the natural flow of the Bow River. Water elements encourage cooling off and engaging play in the summer. With little or no standing water, the spray park offers a safe, fun way for users of all ages to enjoy the space.

Lighting Intent

- Pedestrian-scale pole lighting to provide ambient light levels for safety/visibility.
- Water jets are lit with programmable accent lighting.



Eau Claire Plaza Renderings

CHARACTER AREAS : MARKET STREET



CONNECTION TO THE PAST

The Market Street is a multi-purpose "street" that is designed as a flexible space to integrate the Plaza with the adjacent Eau Claire Market Redevelopment and connect the downtown core with a lookout at the river's edge.

H 1886

A new location is proposed for the historic 1886 building, near the riverwalk promenade, to raise the profile of this landmark cultural artifact. Enhanced with complementary new structure(s), the 1886 complex celebrates the area's history in a contemporary way, with the ability to house community and commercial enterprises. Heritage interpretive elements will be incorporated throughout the area.

I Boardwalk

The Market Street terminates with a boardwalk, an amenity space for 1886 and a transition to the Eau Claire Promenade.

J "Street"

Human-scaled, multi-modal, and readily adaptable for a variety of events and interior/exterior functions, this is an active and vibrant interface between the Plaza and the Market. The street is lined with large canopy trees to provide opportunities for shade an edge condition suitable for sitting. Appropriately-scaled feature lighting helps animate the street throughout the year. Pedestrian-oriented urban design promotes spilling out onto the street from adjacent market shops and restaurants.

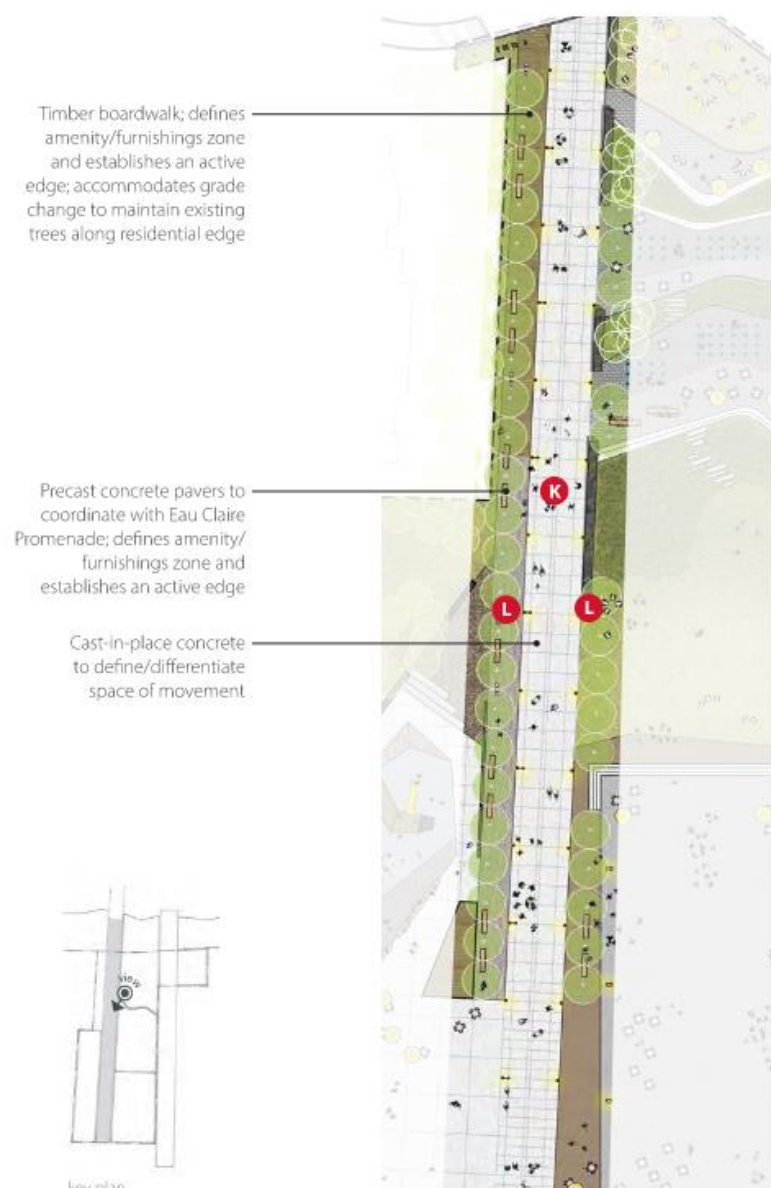
Lighting Intent

- Pedestrian-scale pole lighting to provide ambient light levels for safety/visibility.
- Building accent and code-based lighting.
- String lights provide accent lighting.
- Temporary lighting capability for festival/event/seasonal lighting.



Eau Claire Plaza Renderings

CHARACTER AREAS : PROMENADE



CONNECTIVE THREAD

A multi-use pathway runs the length of the plaza on the west side. Located above a utility corridor, this area is focused on providing a clear, legible north-south connection through the site, while buffering the existing residential community from more active plaza uses.

K Multi-Use Pathway

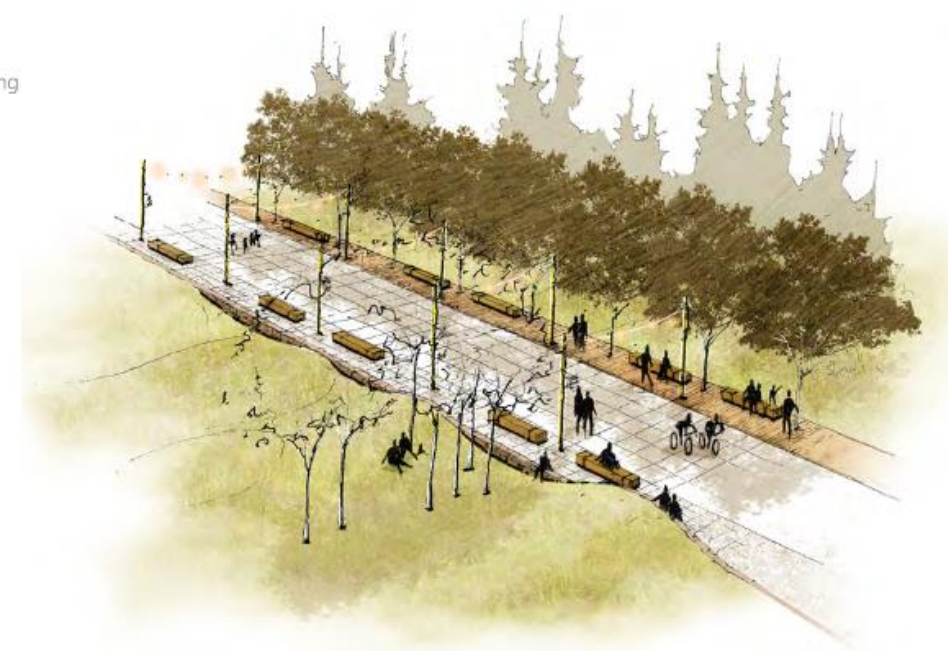
The pathway is broad, open, and fully accessible, able to accommodate the anticipated intensity of pedestrian + cyclist movement linking the downtown core with the Bow River pathway, Prince's Island, and beyond.

L Quiet Edges

The pathway edges, lined with trees and defined with large timber boardwalks, encourage passive use, informal gathering, and people watching. Appropriately-scaled and programmable LED lighting will help to animate the promenade throughout the year.

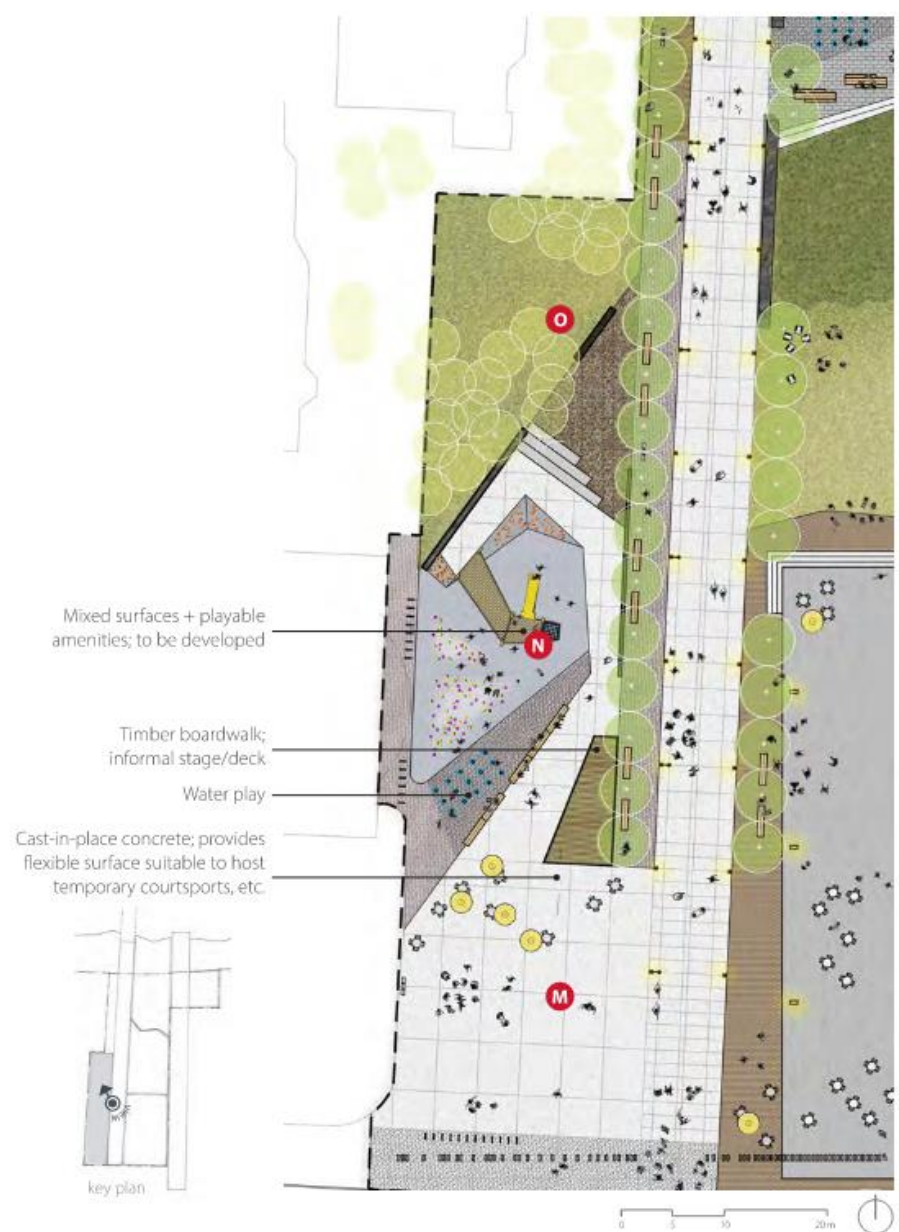
Lighting Intent

- Pedestrian-scale pole lighting to provide ambient light levels for safety/visibility.
- String lights provide accent lighting.



Eau Claire Plaza Renderings

CHARACTER AREAS : PLAY



PLAY FOR ALL AGES

This space connects the Plaza with the YMCA; it serves as its front porch. Activated with urban and nature-inspired elements that encourage play and exploration for all ages, while supporting exterior programming opportunities for the facility.

M Front Porch

Urban amenities populate the plaza space, offering flexibility and adaptability to users enjoying this area, as well as linking the YMCA with Eau Claire Plaza. Well lit, with flexible seating, this is a space that can accommodate year-round programming.

N Overlook

An accessible overlook is a landmark feature of the area, providing a unique vantage point for observing the plaza activity. This artful element offers a variety of play opportunities including a large slide.

O Forest

A treed backdrop enhances the existing buffer between the plaza and the adjacent residential complex, while also providing informal natural play opportunities.

Lighting Intent

- Pedestrian-scale pole lighting to provide ambient light levels for safety/visibility.
- String lights provide accent lighting.
- Water jets and gateway are lit with programmable accent lighting.



Eau Claire Plaza Renderings

PAVING MATERIALS



CIP CONCRETE - PROMENADE | PLAY
COLOUR: STANDARD
FINISH: SANDBLAST
JOINTS: SAWCUT



GRANITE PAVERS 1 - PODIUM
SIZE: 200x600 (8"x24")
COLOUR: BLACK
FINISH: WATERJET | SANDBLAST
TACTILE GROOVE EDGES



GRANITE PAVERS 2 - WATER FEATURE
SIZE: 600x600 (24"x24")
COLOUR: LIGHT GREY
FINISH: FLAMED + BRUSHED



GRANITE COBBLESTONE - PODIUM EDGE
SIZE: 100x100 (4"x4")
COLOUR: LIGHT GREY
FINISH: SPLIT FACE



PRECAST CONCRETE PAVERS - PROMENADE
MANUFACTURER: UNILOCK
PRODUCT: PROMENADE
SIZE: 600x200x100 (8"x24")
COLOUR: OPAL
FINISH: SMOOTH



TIMBER BOARDWALK
SIZE: 100x200 (4"x8")



TREE TRENCH | TREE GRATE
MANUFACTURER: URBAN ACCESSORIES
MODEL: JAMISON



TRUNCATED DOMES (AS NECESSARY)
MANUFACTURER: ADVANTAGE TACTILE SYSTEMS
MODEL: CAST IRON PLATES

Eau Claire Plaza Renderings

SITE FURNISHINGS : FIXED + MOVEABLE



FIXED BENCHES
MANUFACTURER: STREETLIFE
MODEL: DRIFTER



FIXED HARVEST TABLES
MANUFACTURER: STREETLIFE
MODEL: DRIFTER



FIXED CLUSTER SEATING
MANUFACTURER: STREETLIFE
MODEL: DRIFTER



TABLES + CHAIRS
MANUFACTURER: LANDSCAPE FORMS
MODEL: PARC CENTRE



PARASOLS
MANUFACTURER: TBD
MODEL: TBD



WASTE RECEPTACLES
MANUFACTURER: MMCITE
MODEL: RADIUM
WASTE | RECYCLING | COMPOST



BIKE RACKS
MANUFACTURER: MMCITE
MODEL: LOT LIMIT



FIXED SHADE STRUCTURE
MANUFACTURER: NOLA
MODEL: FOUR SEASONS



LOUNGE CHAIRS
MANUFACTURER: LOLLDESIGNS
MODEL: LOLLYGAGGER

Eau Claire Plaza Renderings

SITE LIGHTING



FESTIVAL LIGHTS
LOCATION: URBAN PLAZA



PEDESTRIAN LIGHTS
LOCATION: PROMENADE
MARKET STREET



ACCENT
LOCATIONS: GATEWAY | PLAY



ACCENT
LOCATIONS: PODIUM



ACCENT
LOCATIONS: RIVERSIDE TERRACES
PLAY



STRING LIGHTS
LOCATIONS: PROMENADE | PLAY

Eau Claire Plaza Renderings

PLANT PALETTE - INDICATIVE SPECIES

CANOPY TREES

to provide shade, moderate heat island effect, manage stormwater, define edges, enhance pedestrian scale and maintain clear sightlines, and integrate nature with the urban fabric



Brandon Elm



Dropmore Linden

SCREENING TREES

to supplement existing residential buffers



White Spruce

VEGETATED NATURALIZED AREAS

to provide natural edges and define spaces, manage stormwater, enhance pedestrian experience, maintain clear sightlines, and integrate nature with the urban fabric



Ivory Halo Dogwood



Blue Fox Willow

TURF

to provide softscape for programming, manage stormwater, acts as a counterpoint to large podium hardscape, and offers an inviting space for casual "park-like" functions in an urban setting



Ohio Buckeye



Bur Oak



Colorado Spruce



Switch Grass



Avalanche Reed Grass



Echinacea



Liatris