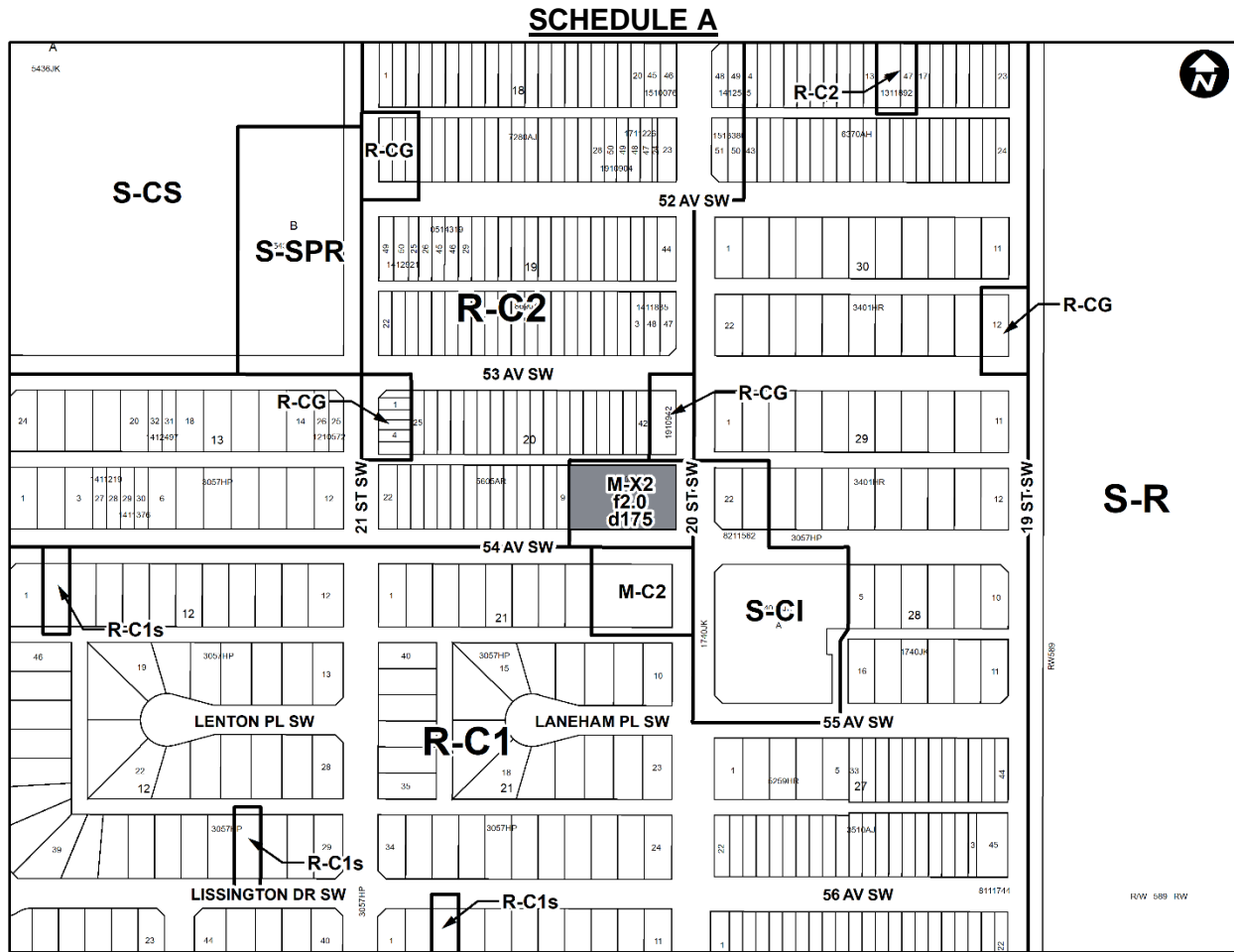
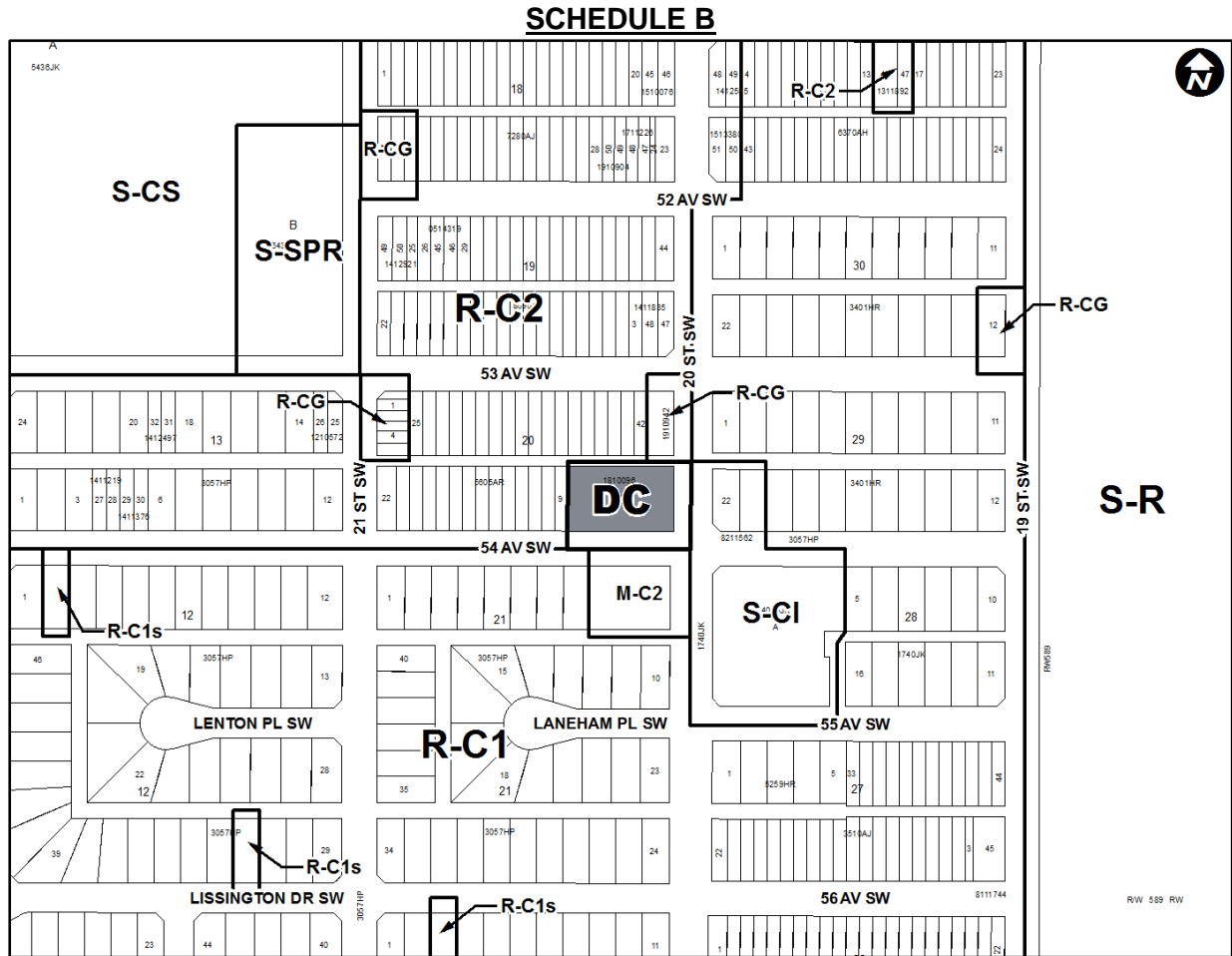


Proposed DC Direct Control District

- The Land Use Bylaw, being Bylaw 1P2007 of the City of Calgary, is hereby amended by deleting that portion of the Land Use District Map shown as shaded on Schedule "A" to this Bylaw and substituting therefor that portion of the Land Use District Map shown as shaded on Schedule "B" to this Bylaw, including any land use designation, or specific land uses and development guidelines contained in the said Schedule "B".



Proposed DC Direct Control District



DIRECT CONTROL DISTRICT

Purpose

1 This Direct Control District Bylaw is intended to:

- (a) provide for multi-residential development with support commercial multi-residential uses; and
- (b) allow additional discretionary use of a medical clinic on the ground floor of a building.

Compliance with Bylaw 1P2007

2 Unless otherwise specified, the rules and provisions of Parts 1, 2, 3 and 4 of Bylaw 1P2007 apply to this Direct Control District Bylaw.

Reference to Bylaw 1P2007

3 Within this Direct Control District Bylaw, a reference to a section of Bylaw 1P2007 is deemed to be a reference to the section as amended from time to time.

Proposed DC Direct Control District

Permitted Uses

- 4 The **permitted uses** of the Multi-Residential – Medium Profile Support Commercial (M-X2) District of Bylaw 1P2007 are the **permitted uses** in this Direct Control District.

Discretionary Uses

- 5 The **discretionary uses** of the Multi-Residential – Medium Profile Support Commercial (M-X2) District of Bylaw 1P2007 are the **discretionary uses** in this Direct Control District with the addition of:

- (a) **Medical Clinic.**

Bylaw 1P2007 District Rules

- 6 Unless otherwise specified, the rules of the Multi-Residential – Medium Profile Support Commercial (M-X2) District of Bylaw 1P2007 apply in this Direct Control District.

Use Area for Medical Clinic

- 7 The maximum **use area** for a **Medical Clinic** is 300.00 square metres.

Floor Area Ratio

- 8 The maximum **floor area ratio** is 2.0.

Density

- 9 The maximum **density** is 175 **units** per hectare.

Relaxations

- 10 The **Development Authority** may relax the rules contained in Sections 6, 7, 8, and 9 of this Direct Control District Bylaw in accordance with Sections 31 and 36 of Bylaw 1P2007.