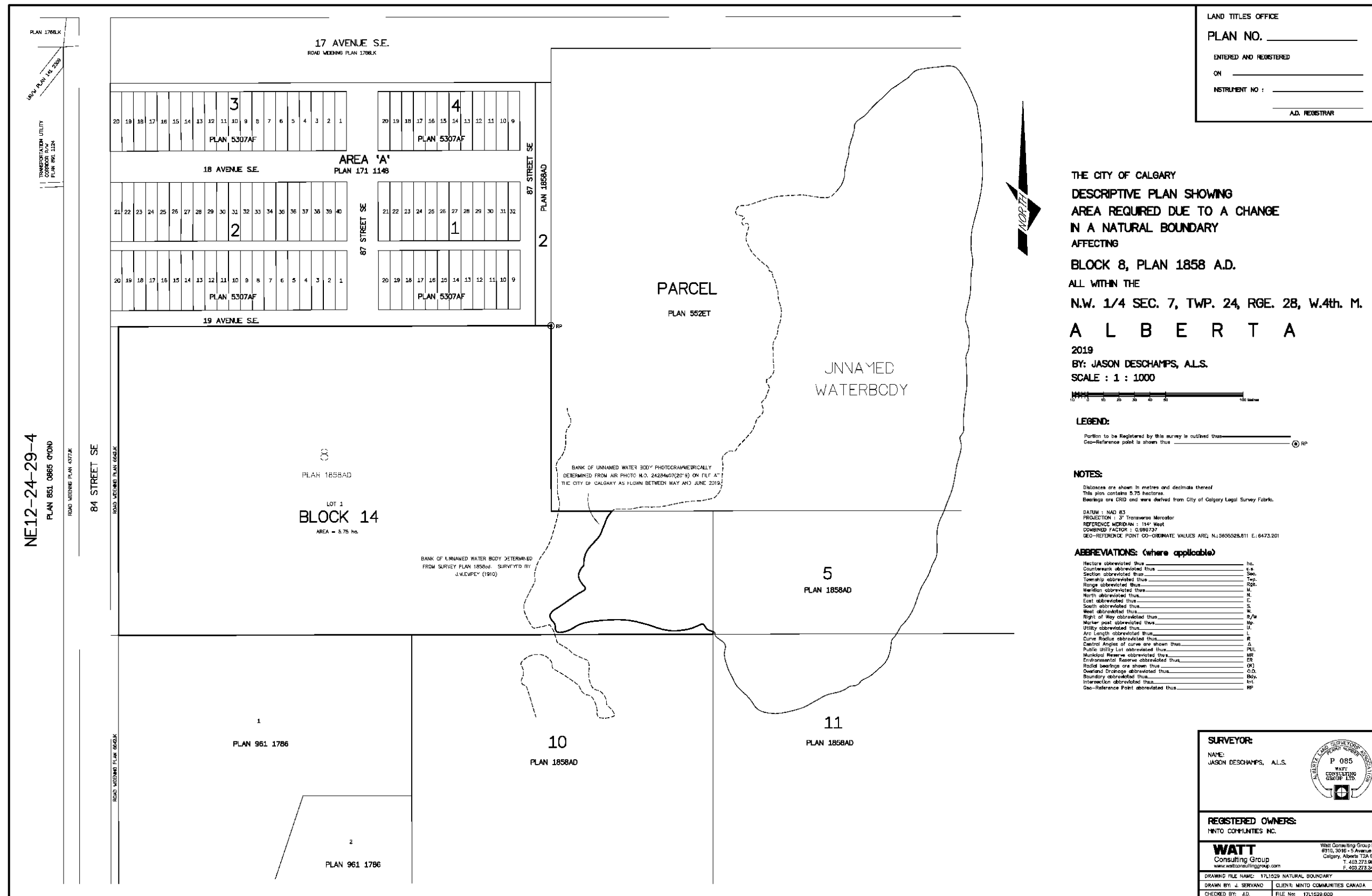
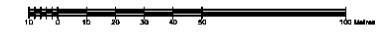


Wetland Survey



LAND TITLES OFFICE
PLAN NO. _____
ENTERED AND REGISTERED
ON _____
INSTRUMENT NO : _____
A.D. REGISTRAR

THE CITY OF CALGARY
DESCRIPTIVE PLAN SHOWING
AREA REQUIRED DUE TO A CHANGE
IN A NATURAL BOUNDARY
AFFECTING
BLOCK 8, PLAN 1858 A.D.
ALL WITHIN THE
N.W. 1/4 SEC. 7, TWP. 24, RGE. 28, W.4th. M.
A L B E R T A
2019
BY: JASON DESCHAMPS, A.L.S.
SCALE : 1 : 1000



LEGEND:
Portion to be Registered by this survey is outlined thus _____
Geo-Reference point is shown thus _____ (RP)

NOTES:
Distances are shown in metres and decimals thereof
This plan contains 5.75 hectares.
Bearings are GRID and were derived from City of Calgary Legal Survey Fabric.
DATUM : NAD 83
PROJECTION : 3° Transverse Mercator
REFERENCE MERIDIAN : 114° West
CONVERSION FACTOR : 0.99997
GEO-REFERENCE POINT CO-ORDINATE VALUES ARE: N: 5855528.811 E: 8473.201

ABBREVIATIONS: (where applicable)
Hectare abbreviated thus ha.
Countersink abbreviated thus c.s.
Section abbreviated thus Sec.
Township abbreviated thus Twp.
Range abbreviated thus Rge.
Meridian abbreviated thus M.
North abbreviated thus N.
East abbreviated thus E.
South abbreviated thus S.
West abbreviated thus W.
Right of Way abbreviated thus R/W
Marker post abbreviated thus M.P.
Utility abbreviated thus U.
Arc Length abbreviated thus L.
Curve Radius abbreviated thus R.
Control Angles of curve are shown thus A.
Public Utility Lot abbreviated thus P.U.L.
Municipal Reserve abbreviated thus MR
Environmental Reserve abbreviated thus ER
Radial bearing are shown thus (R)
Overland Drainage abbreviated thus O.D.
Boundary abbreviated thus Bdy.
Intersection abbreviated thus Int.
Geo-Reference Point abbreviated thus RP

SURVEYOR:
NAME:
JASON DESCHAMPS, A.L.S.

REGISTERED OWNERS:
MINTO COMMUNITIES INC.

WATT
Consulting Group
Watt Consulting Group Ltd.
8910, 30th St - 5 Avenue NE
Calgary, Alberta T2N 0K4
T: 403.273.9001
F: 403.273.3440

DRAWING FILE NAME: 17L1529 NATURAL BOUNDARY
DRAWN BY: J. SERVANO CLIENT: MINTO COMMUNITIES CANADA
CHECKED BY: J.D. FILE No: 17L1529/002