

# Administration Response to Motion Arising regarding TwinHills Outline Plan PUD2020-0243 2020 March 4

CITY OF CALGARY  
**RECEIVED**  
IN COUNCIL CHAMBER

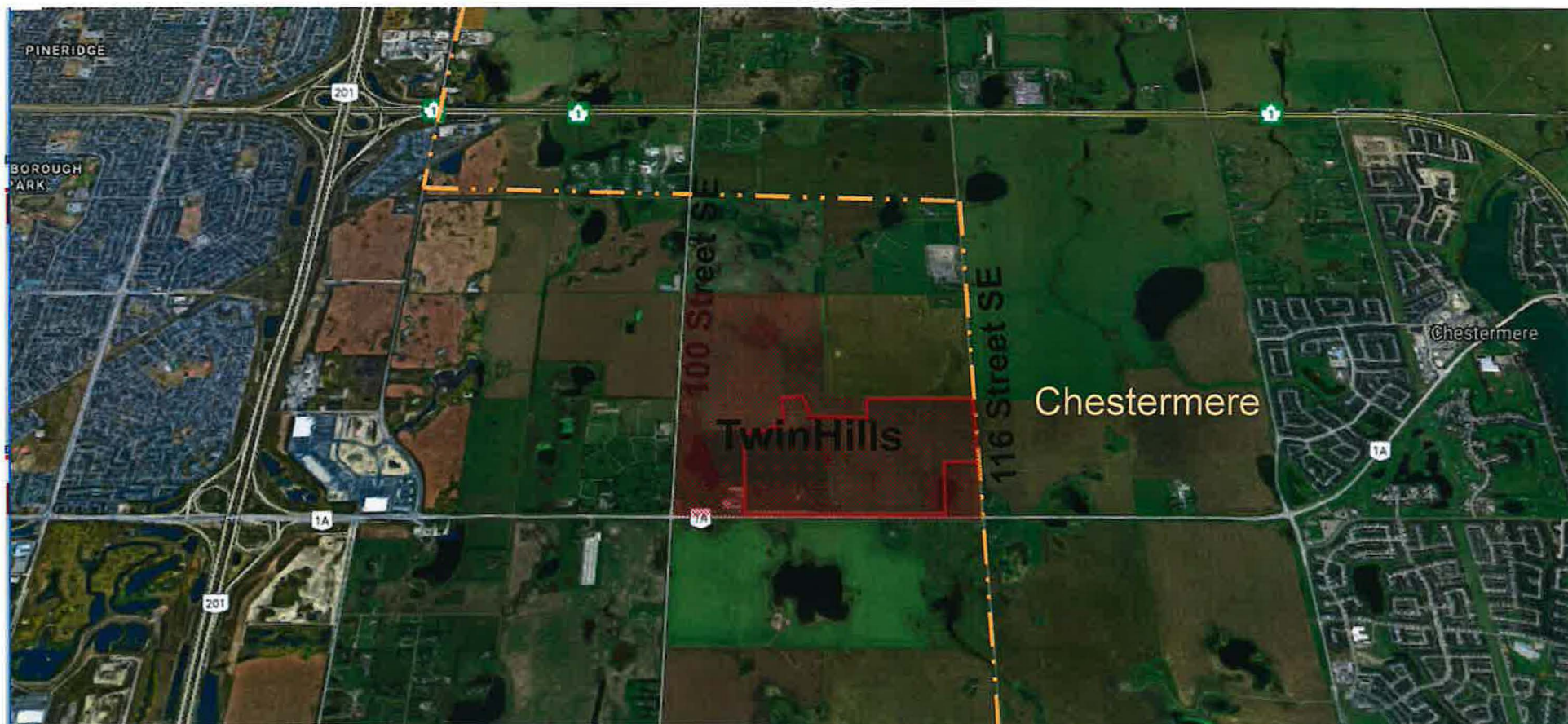
MAR 04 2020

ITEM #7.1 PUD2020-0243  
PUBLIC DISTRIBUTION  
CITY CLERK'S DEPARTMENT





## Context Map



## Motion Arising

That Council:

- a) **Direct Administration to commence work on revisiting the number of school sites necessary in the TwinHills community based on an analysis of school site generation numbers, and Council's direction on new uses of multiple use school sites for the entire Belvedere ASP area;**
- b) Work with the applicant, Joint Use Coordinating Committee (JUCC) and Site Planning Team to confirm suitable locations for the required schools prior to submission of the first outline plan application within stage 2; and
- c) If the sites south of TwinHills Ridge SE, removed from the associated Outline Plan (LOC2018-0024), are no longer required for a school site, that Administration accept a Land Use amendment application without the need to redo the Stage 1 Outline Plan, conditional on addressing the Growth Management Overlay on the subject sites.
- d) Direct that the costs for the above work to be borne by the developer.





## School Site Requirements

Table 1

	Joint Use Site Calculation Methodology	Re-Calculated Requirement	Existing ASP Allocation
CBE Elementary School		4.59	5
CBE Middle School		3.21	3
CSSD Elementary School		2.29	2
CSSD Elementary & Middle (K-9) School		1.65	2
FrancoSud		0.43	0
<b>Total</b>		<b>12.17</b>	<b>12</b>

## Motion Arising

That Council:

- a) **Direct Administration to commence work on revisiting the number of school sites necessary in the TwinHills community based on an analysis of school site generation numbers, and Council's direction on new uses of multiple use school sites for the entire Belvedere ASP area;**
- b) Work with the applicant, Joint Use Coordinating Committee (JUCC) and Site Planning Team to confirm suitable locations for the required schools prior to submission of the first outline plan application within stage 2; and
- c) If the sites south of TwinHills Ridge SE, removed from the associated Outline Plan (LOC2018-0024), are no longer required for a school site, that Administration accept a Land Use amendment application without the need to redo the Stage 1 Outline Plan, conditional on addressing the Growth Management Overlay on the subject sites.
- d) Direct that the costs for the above work to be borne by the developer.

### **Challenges:**

- Increased operating costs
- Increased construction costs
- Construction timing
- Resourcing constraints

### **Opportunity:**

Initiate negotiations with Ministry of Education and school boards for provision of multiple use school sites.

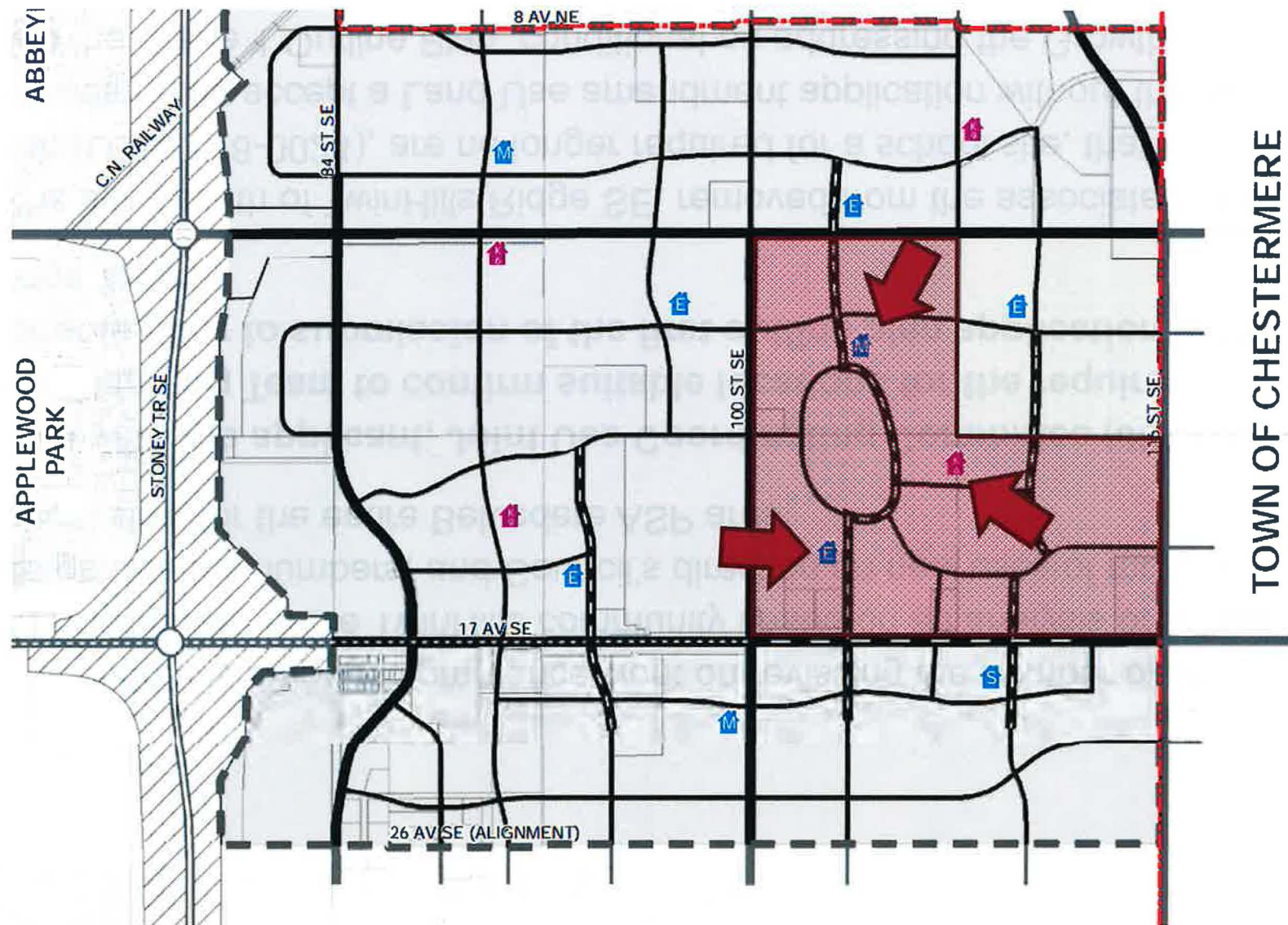


## Motion Arising

That Council:

- a) Direct Administration to commence work on revisiting the number of school sites necessary in the TwinHills community based on an analysis of school site generation numbers, and Council's direction on new uses of multiple use school sites for the entire Belvedere ASP area;
- b) **Work with the applicant, Joint Use Coordinating Committee (JUCC) and Site Planning Team to confirm suitable locations for the required schools prior to submission of the first outline plan application within stage 2; and**
- c) If the sites south of TwinHills Ridge SE, removed from the associated Outline Plan (LOC2018-0024), are no longer required for a school site, that Administration accept a Land Use amendment application without the need to redo the Stage 1 Outline Plan, conditional on addressing the Growth Management Overlay on the subject sites.
- d) Direct that the costs for the above work to be borne by the developer.

## Belvedere ASP - Map 7





## Motion Arising

That Council:

- a) Direct Administration to commence work on revisiting the number of school sites necessary in the TwinHills community based on an analysis of school site generation numbers, and Council's direction on new uses of multiple use school sites for the entire Belvedere ASP area;
- b) Work with the applicant, Joint Use Coordinating Committee (JUCC) and Site Planning Team to confirm suitable locations for the required schools prior to submission of the first outline plan application within stage 2; and
- c) **If the sites south of TwinHills Ridge SE, removed from the associated Outline Plan (LOC2018-0024), are no longer required for a school site, that Administration accept a Land Use amendment application without the need to redo the Stage 1 Outline Plan, conditional on addressing the Growth Management Overlay on the subject sites.**
- d) Direct that the costs for the above work to be borne by the developer.

## Motion Arising

That Council:

- a) Direct Administration to commence work on revisiting the number of school sites necessary in the TwinHills community based on an analysis of school site generation numbers, and Council's direction on new uses of multiple use school sites for the entire Belvedere ASP area;
- b) Work with the applicant, Joint Use Coordinating Committee (JUCC) and Site Planning Team to confirm suitable locations for the required schools prior to submission of the first outline plan application within stage 2; and
- c) If the sites south of TwinHills Ridge SE, removed from the associated Outline Plan (LOC2018-0024), are no longer required for a school site, that Administration accept a Land Use amendment application without the need to redo the Stage 1 Outline Plan, conditional on addressing the Growth Management Overlay on the subject sites.
- d) Direct that the costs for the above work to be borne by the developer.**



### **ADMINISTRATION RECOMMENDATION:**

That the Standing Policy Committee on Planning and Urban Development recommend that Council receive this report for the Corporate record.