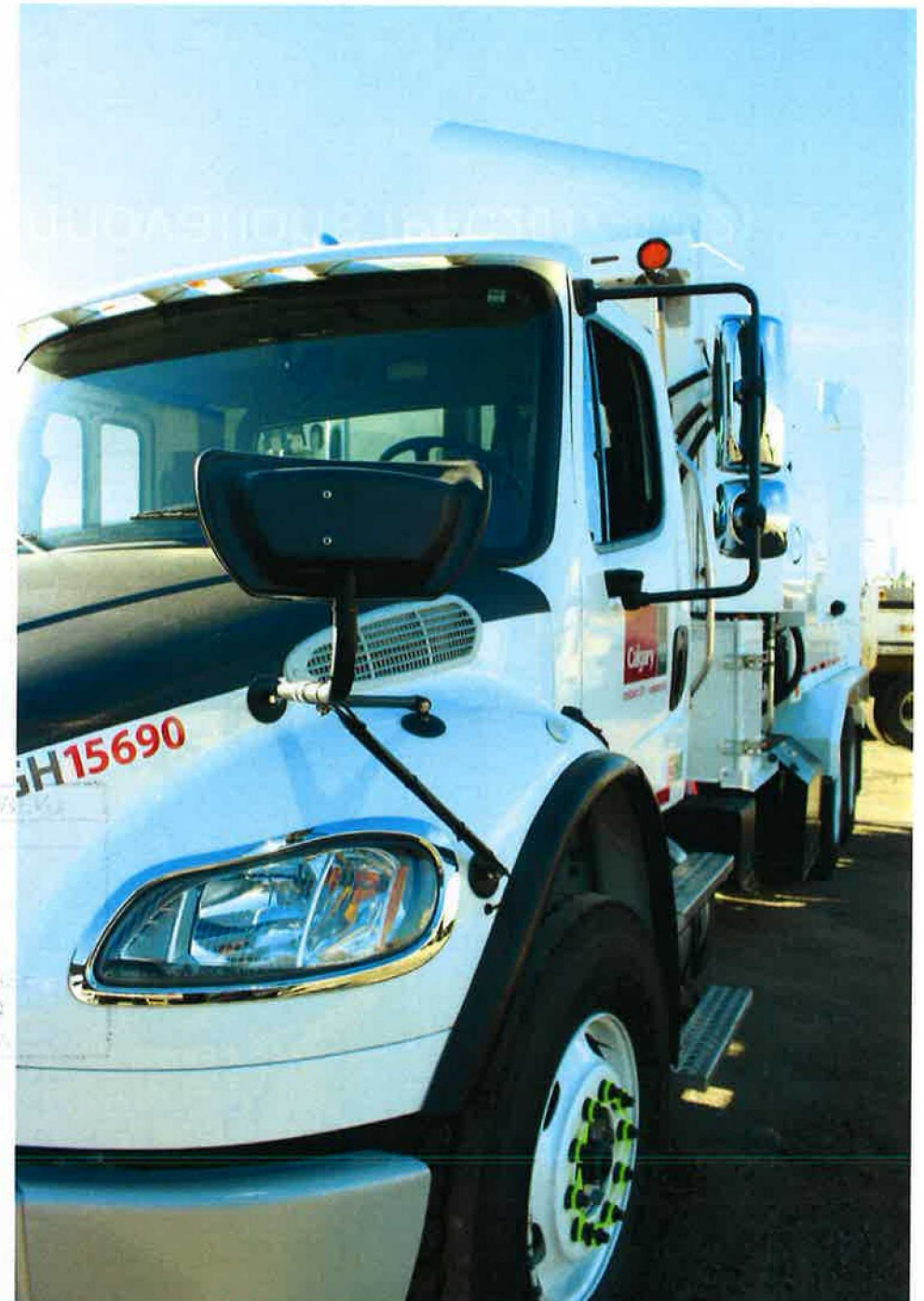




Request to market and sell
Fleet products and innovations (PFC2017-0332)
May 2, 2017

Fleet Services

- Understanding our customer's service delivery requirements
- Research and assess current market options in response to City business unit requirements
- Develop innovative designs, manufacture equipment and components not available in the market



Current units



Dump truck (Year-round)



Drip tank (Winter and spring clean-up)



Sander (Snow and ice control and gravel application)



- ✓ Slip-in design allows for multi-use chassis
- ✓ Creates efficiency in service delivery
- ✓ Increases utilization of existing fleet of dump trucks
- ✓ Provides opportunity for future reduction in fleet count for Roads
- ✓ Currently investigating patentability of its design



Current unit: Fix mounted chassis asphalt carrier



Slip-in asphalt carrier / recycler mounted to truck

Administration recommendation

That the Priorities and Finance Committee recommend that Council:

Approve the sale of designs, fully manufactured products, innovative solutions and products including (but not limited to) slip-in asphalt carriers to other municipalities.