

PROPOSED AMENDMENTS TO THE WEST MACLEOD AREA STRUCTURE PLAN
SUPPORTING INFORMATION

- a) Delete references to “Map 6” and replace with “Map 7”.
- b) Delete references to “Map 7” and replace with “Map 8”.
- c) Delete references to “Map 8” and replace with “Map 9”.
- d) Delete references to “Map 9” and replace with “Map 10”.
- e) Delete references to “Map 10” and replace with “Map 11”.
- f) Delete references to “Map 11” and replace with “Map 12”.
- g) Delete references to “Map 12” and replace with “Map 13”.
- h) Delete references to “Map 13” and replace with “Map 14”.
- i) Delete references to “Map 14” and replace with “Map 15”.
- j) Delete references to “Map 15a” and replace with “Map 16”.
- k) Delete Map 15b entitled “Vegetation Cover and Wetland Classification” in Appendix F, of the West Macleod Area Structure Plan.
- l) Delete references to “Map 15b” and replace with “Map 16”.
- m) Delete references to “Map 16” and replace with “Map 17”.
- n) In Appendix C of the West Macleod Area Structure Plan, delete the newly renumbered Map 15 entitled “Joint Use Sites” and replace with revised Map 15 entitled “Joint Use Sites”.
- o) In Appendix F of the West Macleod Area Structure Plan, delete the newly renumbered Map 16 entitled “Vegetation Cover and Wetland Classification” and replace with revised Map 16 entitled “Vegetation Cover and Wetland Classification”.
- p) Delete all text in Appendix F of the West Macleod Area Structure Plan and replace with the following, before the newly replaced Map 16:

“Appendix F: Biophysical Background Information

- 1. Several biophysical inventories were completed in support of this Plan (see Maps 16 for the study areas for each):
- 2. The West Macleod Area Structure Plan: Biophysical Inventory Update was completed in 2009 by Jacques Whitford AXYS Ltd.
- 3. Additional biophysical data was collected in 2013 by Stantec Consulting Ltd., but no formal report was completed.

4. The West Macleod Area Structure Plan Amendment Area: Ecological Inventory was completed in 2017 by Stantec Consulting Ltd. Map 16 provides an inventory of Vegetation Cover and Wetland Classifications in the West Macleod Area Structure Plan. This map is intended to be read in association with Map 6 and Map 8.”

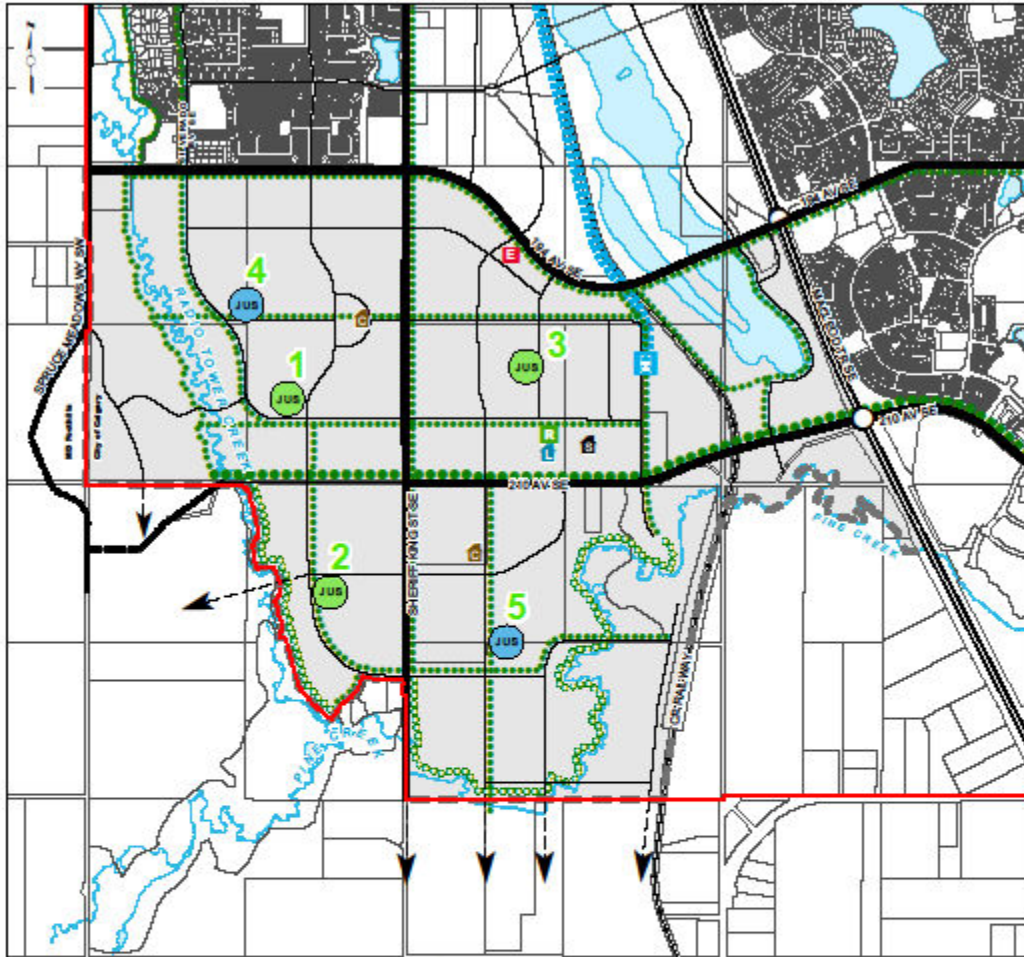
- q) Delete Appendix G of the West Macleod Area Structure Plan entirely and replace with the following:

“APPENDIX G: SLOPES

Slopes

Map 17 indicates the general areas of slope in the Plan Area. The information shown on this map for the Radio Tower Creek Slopes are to be read in reference to the Residential Area of Interest policies in Section 5.2 and Council’s Slope Adaptive Development Guidelines Policy and Conservation Planning and Design Guidelines. The exact slopes will be determined at the Outline Plan/Land Use Amendment stage.”

- r) In Appendix G of the West Macleod Area Structure Plan, insert Map 17 entitled “Slopes”, following newly inserted text in Appendix G.

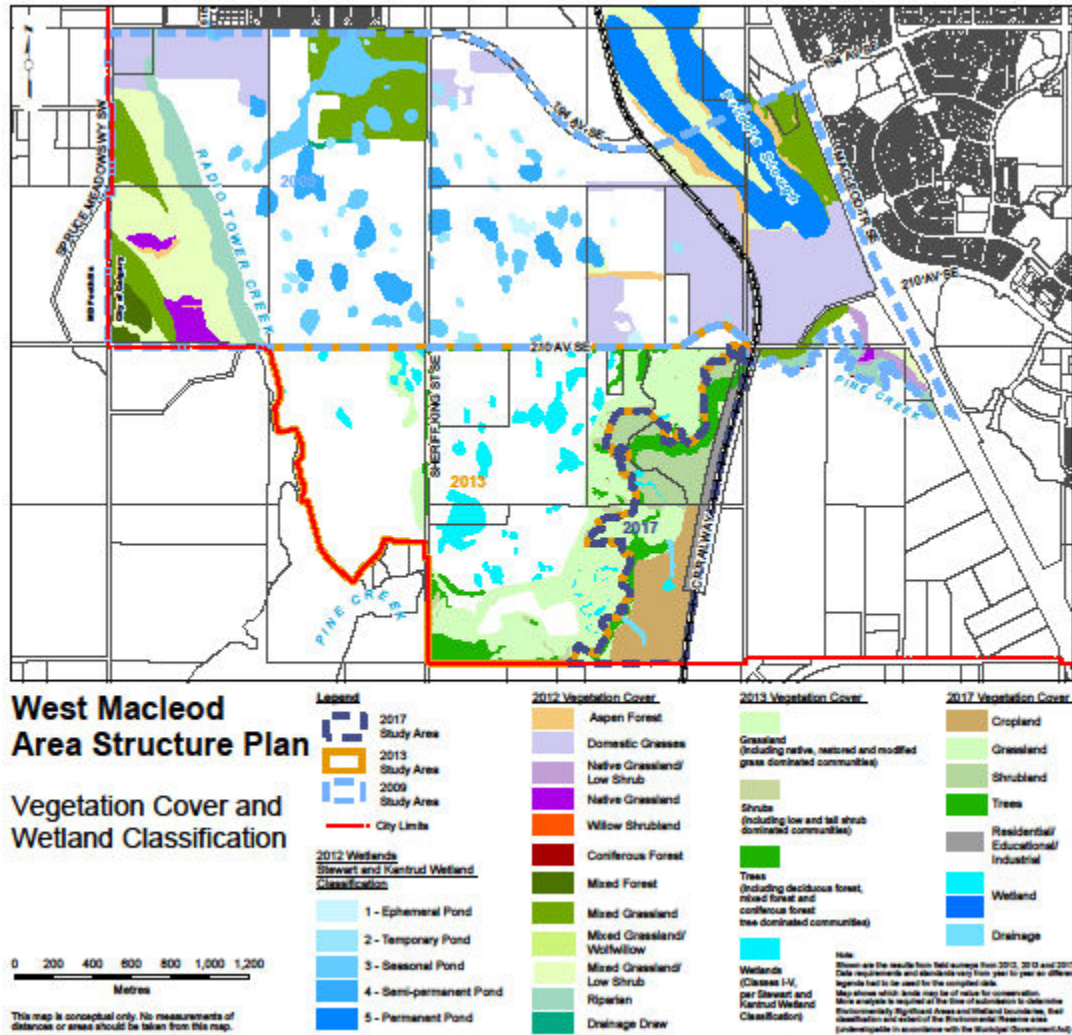


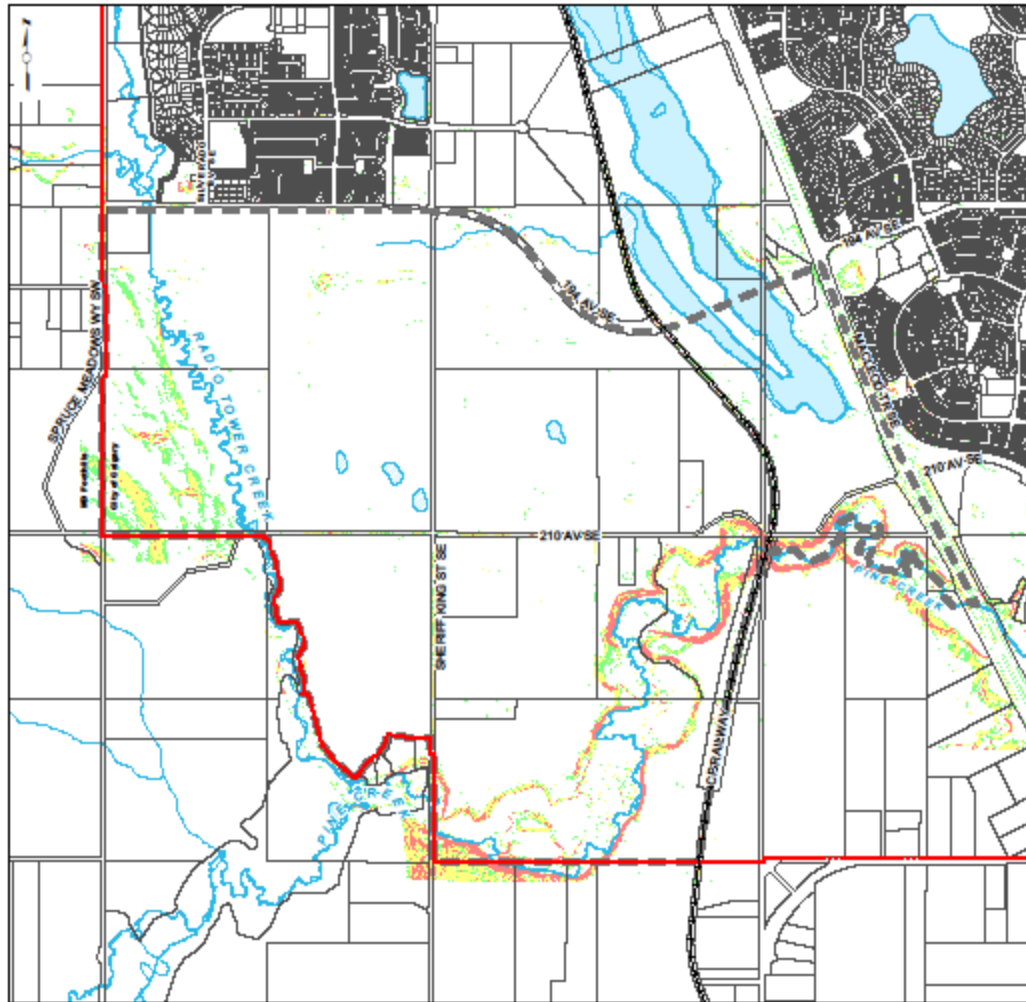
West Macleod Area Structure Plan

Joint Use Sites



This map is conceptual only. No measurements of distances or areas should be taken from this map.





West Macleod Area Structure Plan

Slopes

Legend

- | | |
|---------------------|-----------------|
| Study Area Boundary | Slope |
| City Limits | 15% - 20% |
| | 20% - 33% |
| | 33% and Greater |

0 200 400 600 800 1,000 1,200
Metres

This map is conceptual only. No measurements of distances or areas should be taken from this map.