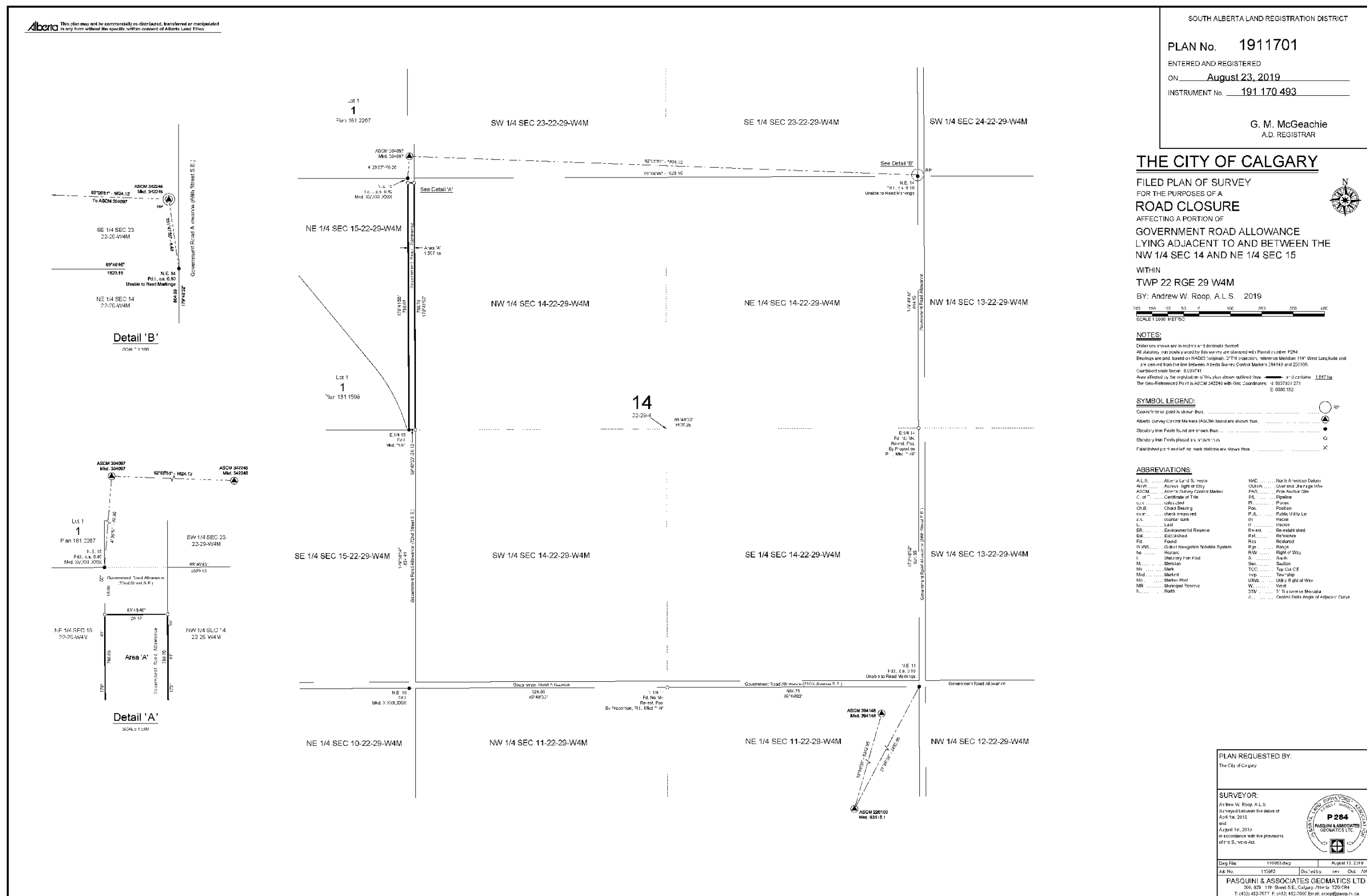


# Registered Road Plan



SOUTH ALBERTA LAND REGISTRATION DISTRICT  
**PLAN No. 1911701**  
 ENTERED AND REGISTERED  
 ON August 23, 2019  
 INSTRUMENT No. 191 170 493  
 G. M. McGeachie  
 A.D. REGISTRAR

**THE CITY OF CALGARY**  
 FILED PLAN OF SURVEY  
 FOR THE PURPOSES OF A  
**ROAD CLOSURE**  
 AFFECTING A PORTION OF  
 GOVERNMENT ROAD ALLOWANCE  
 LYING ADJACENT TO AND BETWEEN THE  
 NW 1/4 SEC 14 AND NE 1/4 SEC 15  
 WITHIN  
 TWP 22 RGE 29 W4M  
 BY: Andrew W. Roop, A.L.S. 2019

**NOTES:**  
 Elevations shown are in metres and 1/4 decimals thereof.  
 All stations, not posted by the survey, are stamped with Permit number P284.  
 Bearings are given based on NAD83 (original) or NAD83 (revised), reference Meridian 114° West Longitude and  
 are corrected from true line between Alberta Survey Control Markers 28443 and 225100.  
 Geoid height factor: 0.09741.  
 Area affected by the emphasis of this plan shown outlined blue.  
 The Geo-Referenced Point is ASCM 342246 with UTM Coordinates: E: 6200152

**SYMBOL LEGEND:**  
 Government point is shown thus:   
 Alberta Survey Control Markers (ASCM) found are shown thus:   
 Stationary Iron Posts found are shown thus:   
 Stationary Iron Posts placed in 1920 are shown thus:   
 Established and unestablished mark stations are shown thus:

**ABBREVIATIONS:**

A.L.S. .... Alberta Land Surveyor	NAD ..... North American Datum
ASCM ..... Alberta Survey Control Marker	ODM ..... Overhead Charge Meter
C. of T. .... Certificate of Title	PA ..... Pipe Anchor Plate
Ch.B. .... Chord Bearing	PL ..... Pipeline
Ch. .... check measured	Pos. .... Position
C.S. .... corner stake	P.U.L. .... Public Utility Line
L ..... Last	R ..... Road
ER ..... Environmental Reserve	R.M. .... Re-establishment
Est. .... Established	Rst. .... Reference
FD ..... Found	R.S. .... Re-established
GNSS ..... Global Navigation Satellite System	R.W. .... Right of Way
H ..... House	S ..... South
M ..... Marked	Sect. .... Section
M ..... Marked	TCC ..... Top of Cut
M.P. .... Marked Post	T.M. .... Township
MB ..... Municipal Boundary	URW ..... Utility Right of Way
N ..... North	W ..... West
	UTM ..... UTM Universal Mercator
	V ..... Vertical Angle of Appliance Curve

PLAN REQUESTED BY:  
 The City of Calgary

SURVEYOR:  
 Andrew W. Roop, A.L.S.  
 Surveyed between the dates of  
 April 19, 2019  
 and  
 August 15, 2019  
 in accordance with the provisions  
 of the S.A. Survey Act.

**P284**  
 ANDREW W. ROOP  
 GEOMATICS LTD.

Doc. File: 11095.dwg August 13, 2019  
 Job No. 110285 Drawn by: ars  
 Checked by: CHJ  
 FASQUINI & ASSOCIATES GEOMATICS LTD.  
 365, 829 119 Street S.E., Calgary, Alberta T2C 0H4  
 T: (403) 452-7677 F: (403) 452-7690 Email: arw@fasq.com