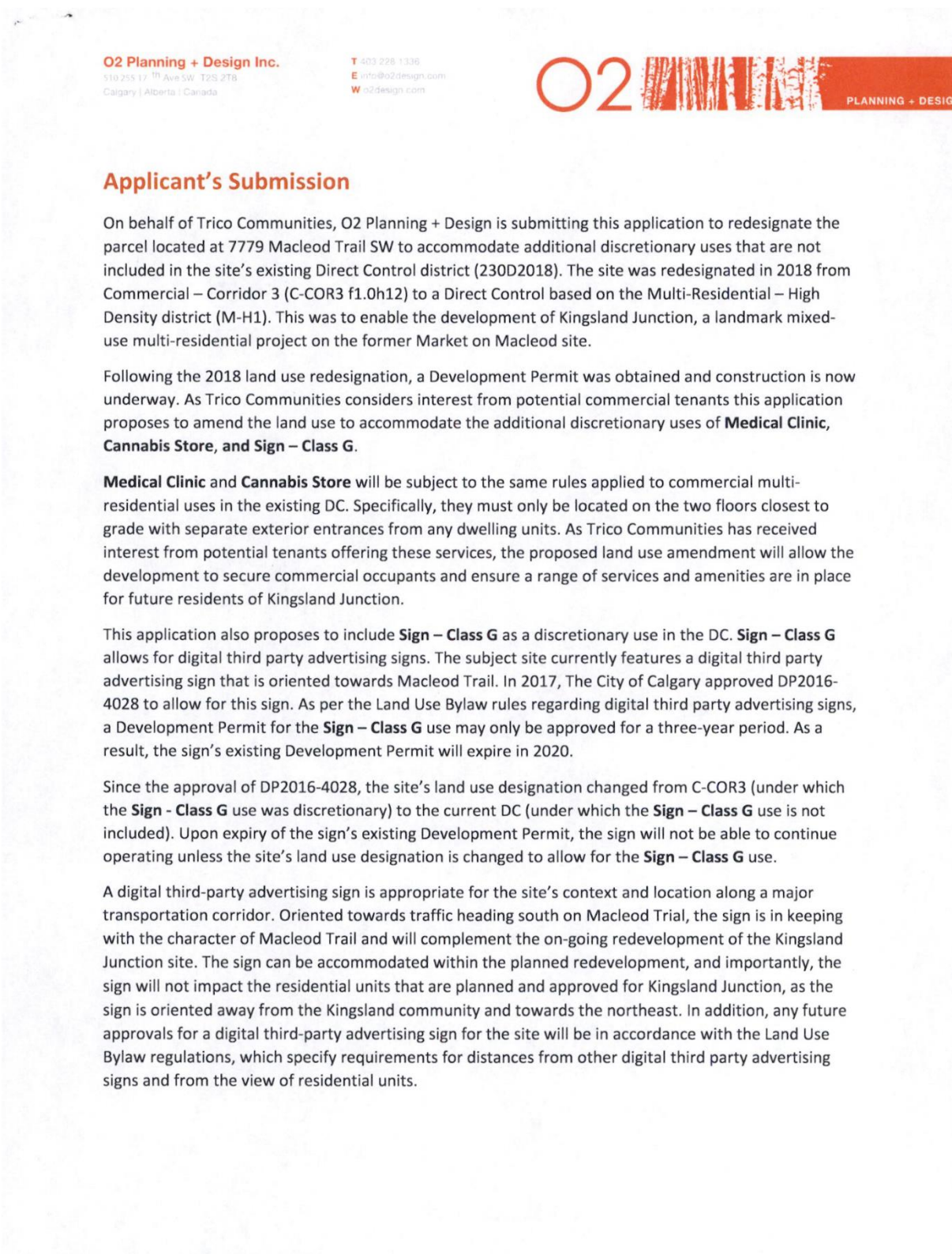


Applicant's Submission

September 20, 2019



Applicant's Submission

In summary, the proposed land use amendment will enable Kingsland Junction to include a broader mix of uses that are consistent with development along Macleod Trail while maintaining the vision and intent for Kingsland Junction.

Throughout the application process, Trico Communities, along with O2 Planning + Design, will work collaboratively with officials at the City of Calgary, representatives from the local Councillor's office, and residents of Kingsland.