

TABLE OF CONTENTS

EXECUTIVE SUMMARY	4
SECTION 1: INTRODUCTION	5
1.1: Introduction to the Selection Process and Timeline	
1.2: PlaceSpeak Web Portal	
SECTION 2: PUBLIC RESPONSE SUMMARY	7
2.1: Open House	
2.2: Forum	
2.3: Online Survey	
SECTION 3: INDIVIDUAL SITE RESULTS AND RECOMMENDATIONS	13
3.1: Applewood	
3.2: Bowness	
3.3: Chinook Park, Kelvin Grove & Eagle Ridge	
3.4: Deer Run	
3.5: Edgemont	
3.6: Huntington Hills	
3.7: Midnapore	
3.8: New Brighton	
3.9: Quarry Park	
3.10: Southwood	
SECTION 4: CONCLUSIONS	34
SECTION 5: NEXT STEPS	36

Digital Appendix with all survey data provided to The City of Calgary. Contact Hayden Kowel.

In December 2011, the Calgary Skateboard Amenities Strategy (CSAS) was adopted by Calgary City Council. The CSAS outlines the need for a network of accessible skateparks totalling an area of 277,000 ft². These skateparks will provide more localized facilities and terrain opportunities for skateboarders and other wheeled active sports. The number of skateparks required to meet the demand will be evaluated on an ongoing basis as skateparks are built.

Stage 1: Site Selection is near completion. For this phase The City solicited local Community Associations to submit their sites for consideration as “priorities”. Analysis undertaken by City Business Units and consultant team left ten priority sites for further consideration. (See Initial Priority Sites Map on p. 5).

In January a public consultation process was undertaken to solicit community feedback for each of the ten sites. This included the development of an online project portal that provides information about each priority site, a discussion forum, and online survey (see image of website home page on p.6).

Three open houses were held in three different quadrants of The City from 5-8pm between January 28-30, 2013. Many families of two or more attended and signed in as one guest for an average of seventy seven

The online survey closed on February 14th, with a total of 395 respondents, including: 265 Skateboarders/Park users, 86 General Residents, 42 Adjacent Residents and 2 City Employees. Most sites received very high levels of support from all respondents.

Bowness, CKE sites were very popular but also found a higher level of concern from adjacent residents. Some of these concerns may be mitigated through design or skatepark relocation on the proposed sites.

Applewood and Quarry Park received the lowest level of interest. It is recommended that these locations be reconsidered in 2015 (See Community Support Summary Chart is on p.11).

It is recommended that the following sites move forward to the design phase for implementation.

Bowness - Neighbourhood/Community
Chinook Park, Kelvin Grove & Eagle Ridge(CKE) - Spot
Deer Run - Neighbourhood
Edgemont - Neighbourhood/Community
Huntington Hills - Spot/Neighbourhood
Midnapore - Neighbourhood
New Brighton - Neighbourhood
Southwood - Neighbourhood

It is hoped that the design and tendering phase will be completed by August and that the first of the smaller parks will be completed in the Autumn of 2014, with the remainder of the sites completed in 2015 (See Process Flowchart on p.37).

To help the community access information about this project, PlaceSpeak was chosen to develop a project website. PlaceSpeak is an online public interaction website and consulting firm that specializes in facilitating community consultation through the use of interactive web portals. The website allows the public to enter discussions, and provides surveys to gather data. The project website <https://www.placespeak.com/CalgaryFSA> was launched to coincide with the first three open houses held between January 28-30, 2014. (See screenshot of homepage below).

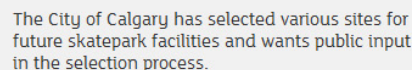
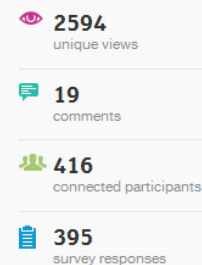
This website provides immediate feedback for all to see. To be involved one must sign-up and create a user profile. The website broadcasts key indicators regarding the success of the consultation process, such as, the number of unique page views, active conversations, active participants and completed surveys.

The location of the participants that complete the online survey is documented on the interactive Google Map to help administrators understand the spread and concentration of interested parties.


[Explore topic consultations](#)
[Start a public consultation](#)
[Sign up](#)
[Log in](#)

Connect with this topic >

By City of Calgary | Topic filed under [Planning](#), [Recreation](#), [Parks](#), [Skateboard](#), [Neighbourhood](#)



There are several ways that you can contribute your ideas and opinions to this consultation. Help inform and influence the outcome:

- Share the word with friends and family



The adjacent table shows a general breakdown of the support for each skatepark based on the proposed skatepark location that they live closest to. The sites are given a colour that represents the level of support.

Local Community Support Summary Chart (Online Survey)

This chart includes one vote per survey respondent based on the skatepark which they live closest to

Applewood	Bowness	CKE	Deer Run	Edgemont
Skateboarders (10) 100% Support 0% Neutral 0% Oppose	Skateboarders (80) 99% Support* 0% Neutral 1% Oppose	Skateboarders (22) 95% Support 5% Neutral 0% Oppose	Skateboarders (13) 92% Support 8% Neutral 0% Oppose	Skateboarders (39) 97% Support 0% Neutral 3% Oppose
General Residents (2) 100% Support 0% Neutral 0% Oppose	General Residents (13) 77% Support 15% Neutral 8% Oppose	General Residents (13) 100% Support 0% Neutral 0% Oppose	General Residents (10) 80% Support 0% Neutral 20% Oppose	General Residents (8) 88% Support 12% Neutral 0% Oppose
Adjacent Residents(0) N/A N/A N/A	Adjacent Residents(5) 40% Support 20% Neutral 40% Oppose	Adjacent Residents(14) 43% Support 0% Neutral 57% Oppose	Adjacent Residents(6) 50% Support 17% Neutral 33% Oppose	Adjacent Residents(1) 100% Support 0% Neutral 0% Oppose
Comments - Low Level of Community Interest (12)	Comments - Most Popular Location - Highest Level of Overall Support and Skateboarder Support	Comments - Highest number of Adjacent Resident Respondents Support (6) and Oppose (8)	Comments - High Skateboarder and Adjacent Resident Support	Comments - High Skateboarder Support
Huntington Hills	Midnapore	New Brighton	Quarry Park	Southwood
Skateboarders (15) 100% Support 0% Neutral 0% Oppose	Skateboarders (24) 100% Support 0% Neutral 0% Oppose	Skateboarders (17) 100% Support 0% Neutral 0% Oppose	Skateboarders (12) 92% Support 0% Neutral 8% Oppose	Skateboarders (30) 100% Support 0% Neutral 0% Oppose
General Residents (18) 94% Support 0% Neutral 6% Oppose	General Residents (4) 100% Support 0% Neutral 0% Oppose	General Residents (2) 100% Support 0% Neutral 0% Oppose	General Residents (2) 100% Support 0% Neutral 0% Oppose	General Residents (12) 100% Support 0% Neutral 0% Oppose
Adjacent Residents(4) 100% Support 0% Neutral 0% Oppose	Adjacent Residents(6) 83% Support 0% Neutral 17% Oppose	Adjacent Residents(2) 100% Support 0% Neutral 0% Oppose	Adjacent Residents(1) 100% Support 0% Neutral 0% Oppose	Adjacent Residents(2) 50% Support 0% Neutral 50% Oppose
Comments - Good Overall Support	Comments - High Skateboarder and Adjacent Resident Support	Comments - 100 %Support	Comments - Low Level of Community Interest (15)	Comments - High Overall Support

Statistics from 2014 Skateboard Future Amenities Online Survey Results (395 Respondents). Survey was completed between Jan28 - Feb14, 2014.

SUPPORT RATING

HIGH OPPOSITION	OPPOSITION	CONCERNS TO ADDRESS	SUPPORT	HIGH SUPPORT
-----------------	------------	---------------------	---------	--------------

* Green text highlights 100% support by a respondent category.

* Red text highlights more than 50% opposition by a respondent category.

3

To summarize the survey results, three diagrams are used. They demonstrate first, the community interest in the proposed site, second, the level of community support, and third, concerns from residents regarding skatepark development. Based upon this data conclusions and recommendations are put forward.

PROPOSED SITE

3.1 APPLEWOOD

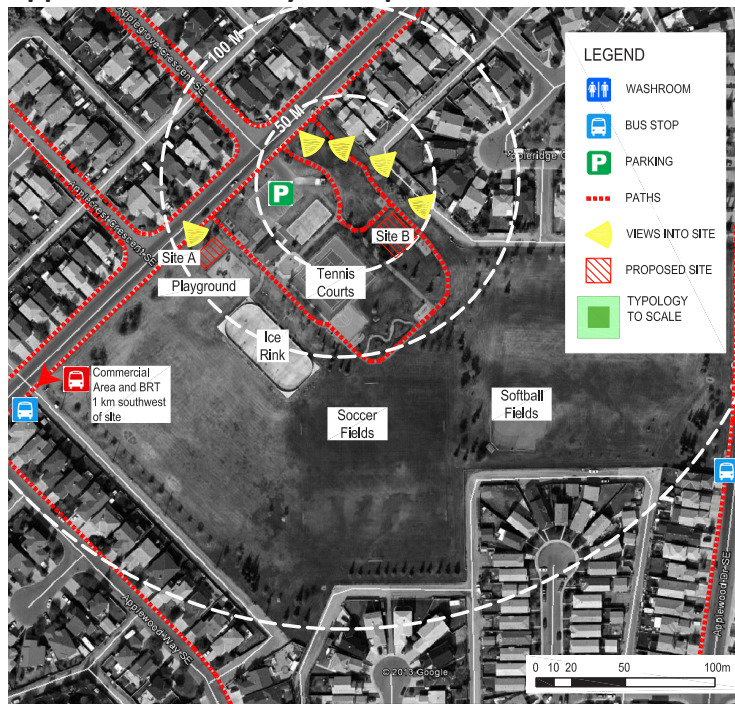
LOCATION

Applewood site is located at Applewood Drive SE and Applecrest Crescent SE.

Applewood Park Community is a residential neighbourhood on the east edge of Calgary surrounded by Highway 201 to the east, Highway 1 to the south, 68th Street SE to the west, and a rail corridor to the north. Applewood Park is located in the centre of the neighbourhood and is a multipurpose park with a variety of sporting opportunities including softball, soccer, tennis, outdoor ice hockey, and playground. A skatepark would complement this multi-use park.



Applewood Site Analysis Map



Site Specific Citizen Comments

No specific comments were documented at the open house, through the online survey or in letters.

Supportive Survey Comments: 7

Opposing Survey Comments: 0

Opposing Letters/Emails: 0

SKATEPARK TYPOLOGIES



Discussion of Survey Results

Applewood received a very low level of interest with only 12 survey respondents amounting to 3% of all survey respondents. While small in number they are very supportive of skatepark development (See pie chart right).

Local skateboarders and residents are 100% supportive of the proposed location and do not have any concerns regarding the skatepark development (See Bar Graphs right).

Applewood received the lowest overall support, with 64% support of the 63% of survey respondents that chose to comment. It also received the highest level of neutral responses from each category of respondents. This may be a result of the park location along Calgary's east border, which may be seen as somewhat less accessible.

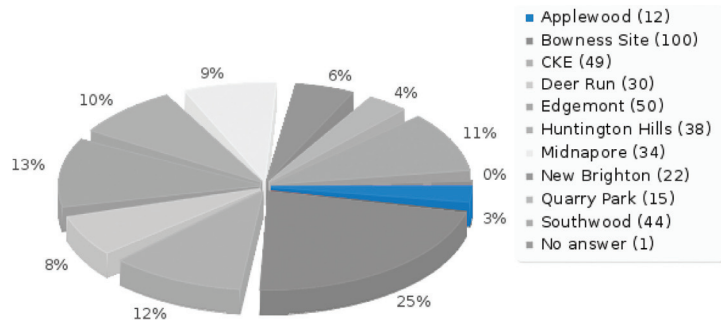
Conclusion

This site is not a high priority and may be reconsidered in a later phase of skatepark development.

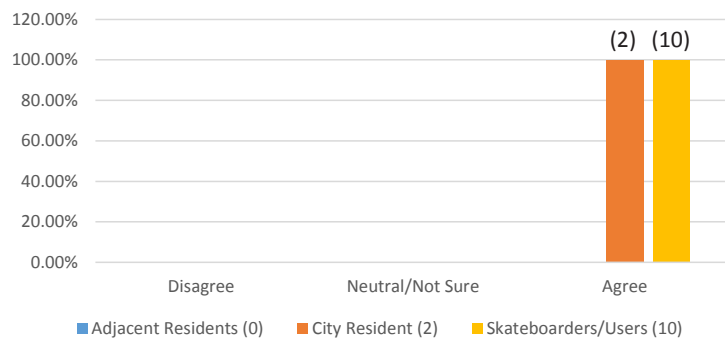
Recommendations

Do not include Applewood in the first phase - priority skatepark development. Reevaluate this site for future developments.

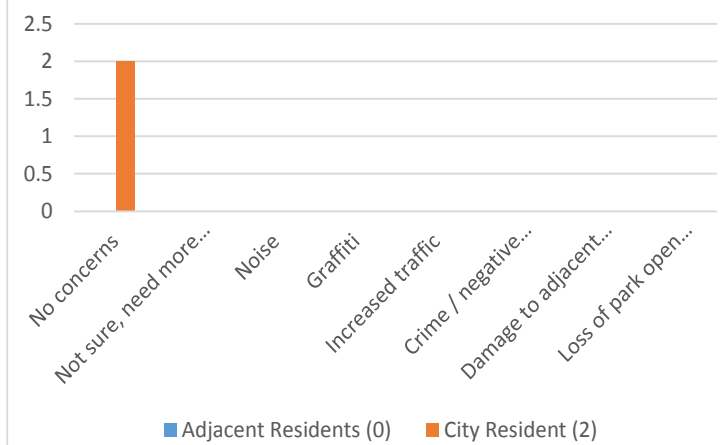
Survey Respondents that Live Closest to Applewood



Applewood
Level of Agreement with Proposed Location



Citizen Main Concerns with Applewood
Skatepark Facility



3

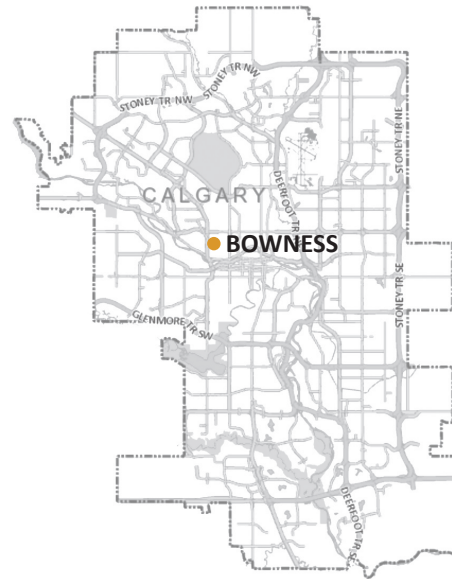
PROPOSED SITE

3.2 BOWNESS

LOCATION

Bowness is located to the east of Our Lady of Assumption School at the corner of 34th Avenue NW and Sarcee Trail NW.

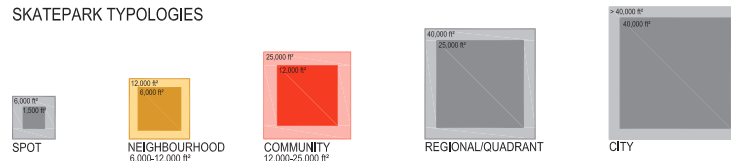
The Bowness neighbourhood is in the northwest quadrant of the city, and is bound by Highway 1 to the south, an environmental corridor/river to the north and west, and railway to the east.



Bowness Site Analysis Map



SKATEPARK TYPOLOGIES



Site Specific Citizen Comments

Citizens mentioned concerns regarding noise and undesirable people after dark.

It was requested that sound barriers be used to contain the noise and the site be well planted with trees and shrubs.

"I have a young son who is just learning to skateboard etc. and it would be wonderful to have a facility in the community where youth can be taught through camps and then hone their skills."

"I think this Skatepark is a wonderful idea. There are many kids around here who will benefit from this park!"

"Calgary needs to have more Skateparks for all ability levels. I like seeing the possibilities of Skateparks next to schools. It opens up new possibilities for physical education classes, or school clubs. This is a great way to get kids into skateboarding."

Supportive Survey Comments: 24
Opposing Survey Comments: 3
Opposing Letters/Emails: 0

Discussion of Survey Results

Bowness received the highest level of interest with 100 survey respondents amounting to 25% of all survey respondents living closest to this site. (See pie chart right).

Local skateboarders and general residents are very supportive of the proposed location. (See Bar Graphs right).

Some adjacent residents have concerns, most related to noise and crime/negative behaviour.

Conclusion

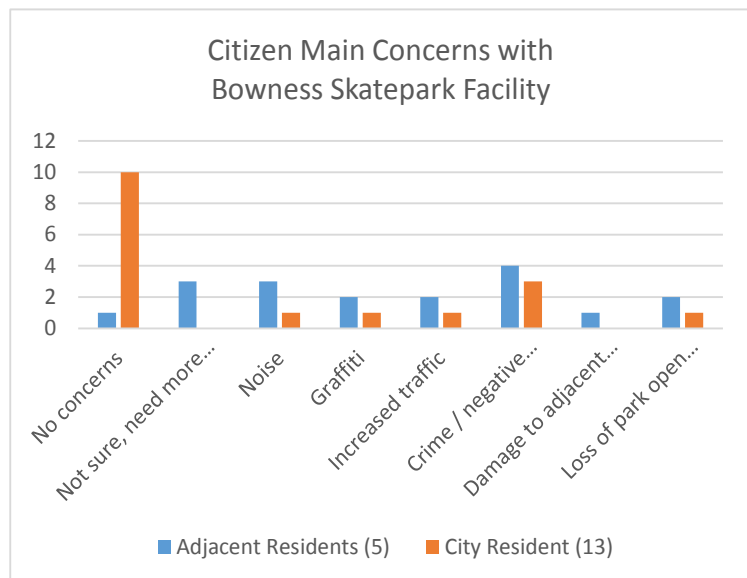
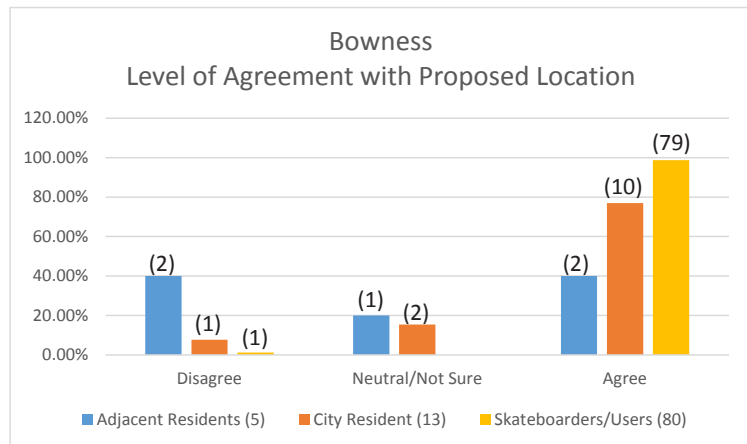
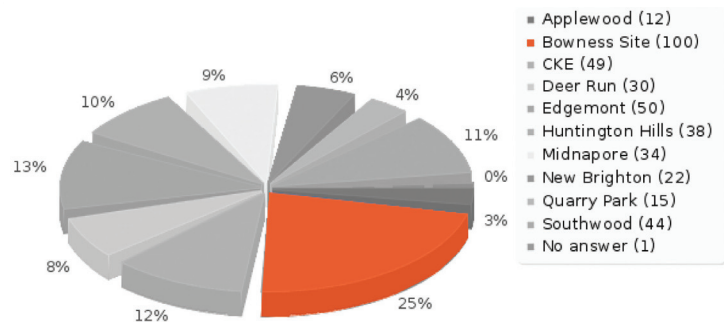
This is a very popular location with what appears to be an easily developable site at the edge of the Bowness neighbourhood. Further, a skatepark will provide a complementary activity to the existing green space adjacent Our Lady of Assumption School.

Recommendations

The City should attempt to site the skatepark in a way that is mutually beneficial for all parties. Give special attention during the design phase to increase the distance of separation to local residents across 4 Ave NW and for design related noise mitigation strategies.

Move forward with the design of a neighbourhood scale skatepark to be implemented in the first phase of skatepark development.

Survey Respondents that Live Closest to Bowness



Note: Due to incomplete online submissions there may be minor discrepancies between pie chart respondent totals and bar graph response levels.

3

PROPOSED SITE

3.3 CHINOOK PARK, KELVIN GROVE & EAGLE RIDGE

LOCATION

The Chinook Park, Kelvin Grove & Eagle Ridge site is located at 73rd Avenue SW and Elbow Drive SW

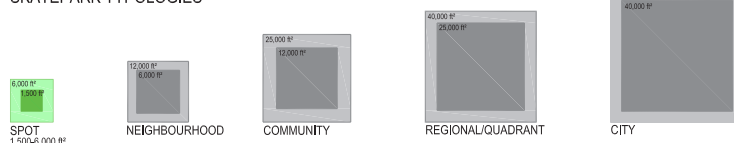
This site acts as a focus for many activities and a skateboard park would complement these opportunities. The site has good access to public transportation and a sizable parking lot and is considered for a skate spot, which does not typically require any specific additional amenities.



CKE Site Analysis Map



SKATEPARK TYPOLOGIES



Site Specific Citizen Comments

Citizens mentioned concerns regarding noise and hours of use, specifically, the difficulty shutting the facility down at night due to spillover ambient light off Elbow Drive. Measures should be taken to ensure park will not be used at night.

The site is lacking specific washroom facilities (after school hours) and for non-students at any time.

Mature trees should be protected.

A local parent noted the great collaboration and spirit amongst the CKE and surrounding areas with the existence of the mobile skatepark program. The parent observed positive interactions and teaching between older and younger children.

"There is a very strong sense of community in CKE. Many residents are volunteers for events and recreational activities. It is a very central location and would serve as a great resource for kids in this community and surrounding communities."

Supportive Survey Comments: 11
Opposing Survey Comments: 6
Opposing Letters/Emails: 0

General Notes

The nature of skate spots is to accommodate adjacent residents. Washrooms and other amenities are provided at home.

The design team will work to integrate the skatepark design to preserve existing trees.

Discussion of Survey Results

CKE received a high level of interest with 49 survey respondents amounting to 12% of all survey respondents. (See pie chart right).

Local skateboarders and general residents are very supportive of the proposed location. (See Bar Graph right).

This site has both the highest number of adjacent resident supporters (6) and the highest number of adjacent resident opposition (8). Neighbour concerns cross the board (See Bar Graph right).

Conclusion

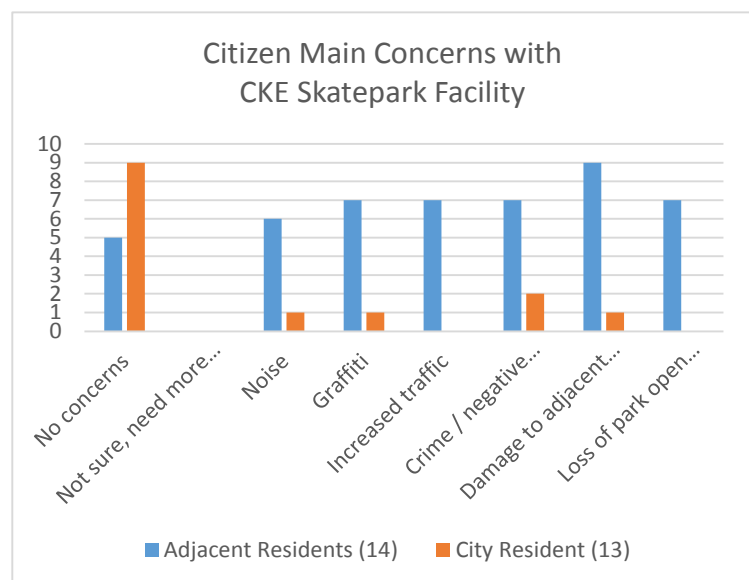
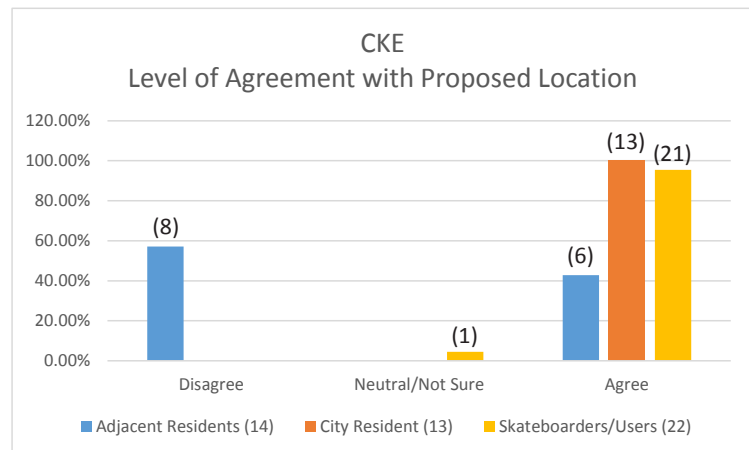
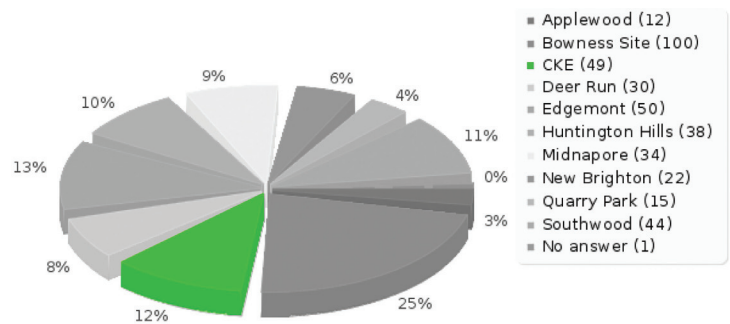
This is a popular location at a local activity hub. The exact siting as proposed may not be optimal for skatepark development since there are mature trees and limited space. This is an opportunity to demonstrate how design can be used to integrate a skatepark in a challenging site. A proposed facility should be on the smaller size of skatepark typology and may feature skateable art.

Recommendations

Move forward with the design of a small skate spot or skateable art to be implemented in the first phase of skatepark development.

Final siting and design are to focus on mitigating adjacent resident concerns.

Survey Respondents that Live Closest to CKE



PROPOSED SITE**3.4 DEER RUN - DEER RUN COMMUNITY CENTRE****LOCATION**

Deer Run is located at the intersection 146th Avenue SE and Deer Lane Road SE

Deer Run School and Community Centre are the hub of the Deer Run neighbourhood and offer a couple potential locations for a skatepark.

**Deer Run Site Analysis Map****Site Specific Citizen Comments**

A citizen mentioned concerns that include the volume of skatepark users, hours of operation and lighting, as well as the potential for increased vandalism or illicit activity.

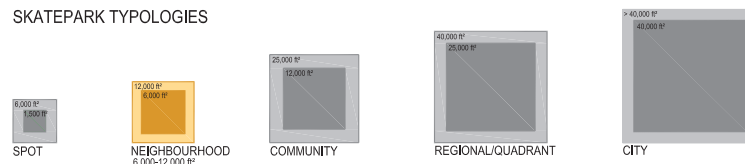
"I have 3 boys and they love BMX biking and Skate boarding we live in Deer Run and this would be so awesome for them."

"I feel this would give youth a stronger sense of community, and a much more positive way to express ones self, decrease the amount of boredom related crimes, and aggression, as a way of speaking out."

Supportive Survey Comments: 9

Opposing Survey Comments: 1

Opposing Letters/Emails: 0

SKATEPARK TYPOLOGIES

Discussion of Survey Results

Deer Run received a modest level of interest with 30 survey respondents amounting to 9% of all survey respondents. (See pie chart right).

Local skateboarders and general residents are very supportive of the proposed location. (See Bar Graph right).

The most prominent neighbour and general resident concerns are noise, graffiti, and potential crime/negative park users.

Conclusion

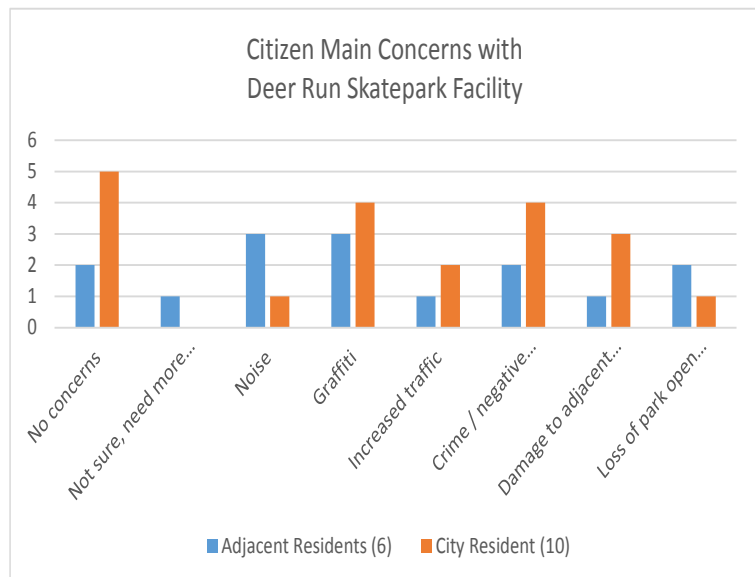
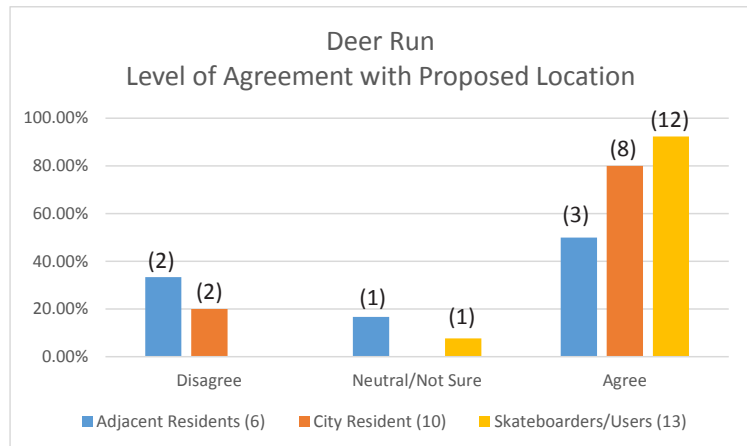
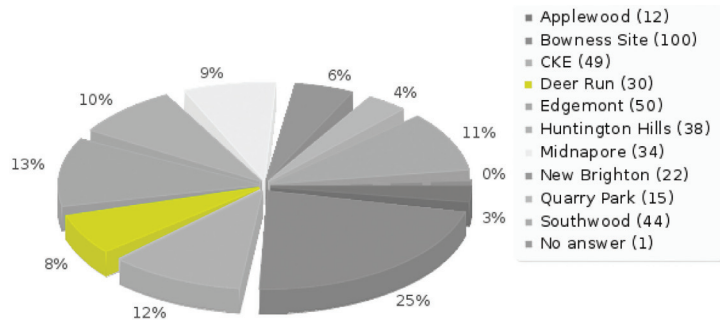
This is a popular location as a local activity hub. Two potential sites are shown on the Analysis Map. Anecdotal feedback suggests Site B may have poor geotechnical support and therefore may be less suitable for development. Site A is adjacent the bus loop and recreation centre entrance and is therefore well located for casual surveillance. Located along 146 Avenue SE, Site A is closer to adjacent residents.

Recommendations

Due to its strategic deep South Central location in the Network, with east pedestrian linkages to McKenzie and west linkages to Midnapore and Sundance, Deer Run is an excellent location to demonstrate a neighbourhood level skatepark.

Move forward with the design of a neighbourhood level skatepark on Site A to be implemented in the first phase of skatepark development. Final siting and design of the skatepark at Site A should attempt to mitigate adjacent resident concerns.

Survey Respondents that Live Closest to Deer Run



Note: Due to incomplete online submissions there may be minor discrepancies between pie chart respondent totals and bar graph response levels.

3

PROPOSED SITE 3.5 EDMONT

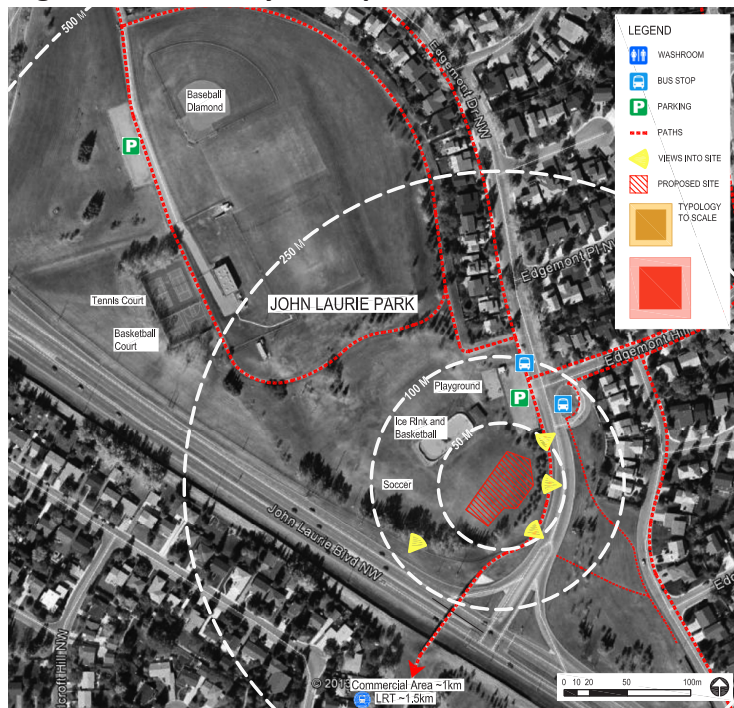
LOCATION

Intersection of John Laurie Boulevard NW and Edgemont Drive NW.

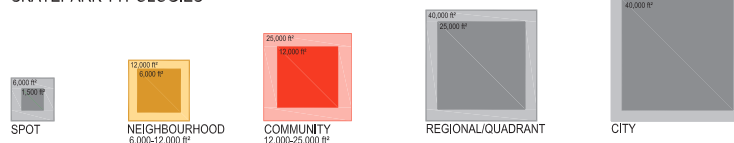
The proposed Edgemont location is within the John Laurie Park. This site is connected across John Laurie Boulevard to the south Dalhousie neighbourhood through and overhead pedestrian bridge. The site provides parking and washroom facilities. The suggested location also has high visibility and excellent access to local greenway connections and transit.



Edgemont Site Analysis Map



SKATEPARK TYPOLOGIES



Site Specific Citizen Comments

Local residents expressed concern regarding potential noise, vandalism and graffiti.

There is also concern that similar to other park activities, the skatepark user parking will overflow onto local residential streets.

"Please make edgemont first!!!!!"

"NW needs more parks!!"

"I really think we need a skateboard park in Edgemont because it takes a long time to get downtown. It would be great to bike down to a park in my own community."

Supportive Survey Comments: 19

Opposing Survey Comments: 1

Opposing Letters/Emails: 3 (1 - Maverick's Football Club)

Discussion of Survey Results

Edgemont received a high level of interest with 48 survey respondents amounting to 13% of all survey respondents. (See pie chart right).

Local skateboarders and residents are very supportive of the proposed location and the survey results yielded zero neighbourhood opposition (See Bar Graph right). While, there was minimal interest from adjacent residents with regard to taking the online survey, concerns were presented in the form of emails.

Conclusion

This is a very popular location with an easily developable site and reasonable separation from adjacent residential neighbourhoods. It is well suited for skatepark development.

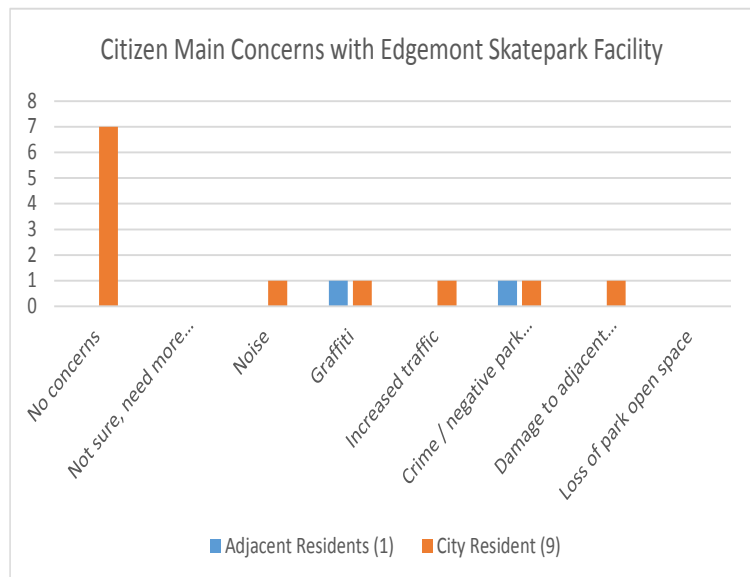
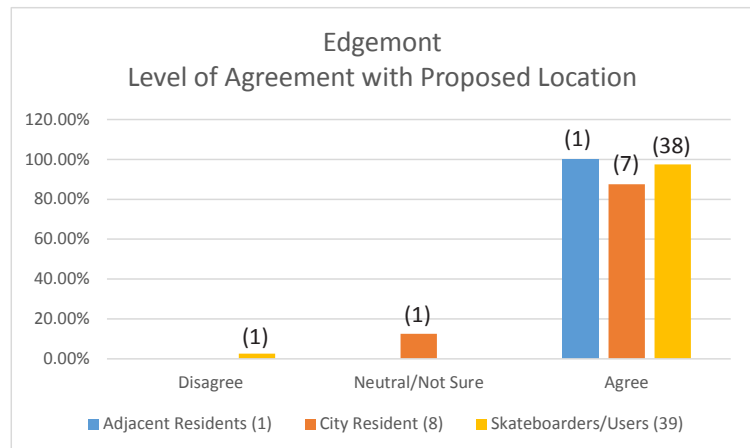
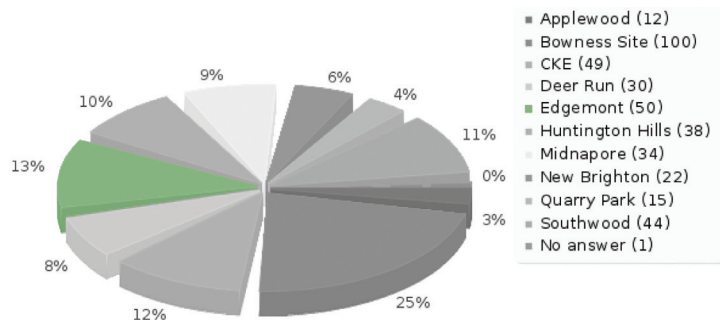
Recommendations

Due to its strategic NorthWest location in the Network, Edgemont is an excellent location to demonstrate a large neighbourhood or small community level skatepark.

The design process should take careful consideration of existing facility users. The construction of an associated washroom facility would benefit the skatepark and all park users.

Move forward with skatepark design to be implemented in the first phase of skatepark development.

Survey Respondents that Live Closest to Edgemont



Note: Due to incomplete online submissions there may be minor discrepancies between pie chart respondent totals and bar graph response levels.

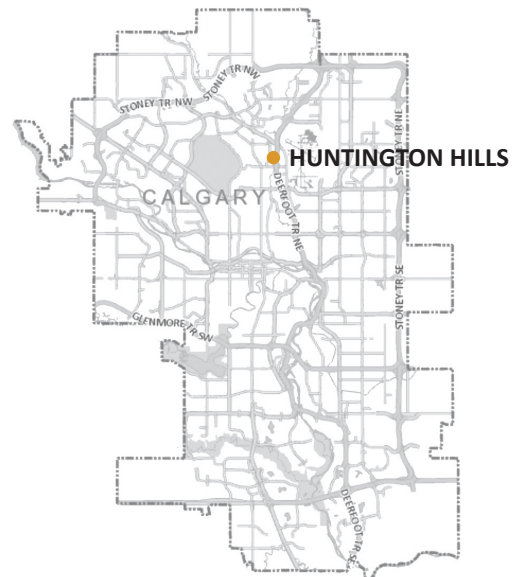
PROPOSED SITE

3.6 HUNTINGTON HILLS

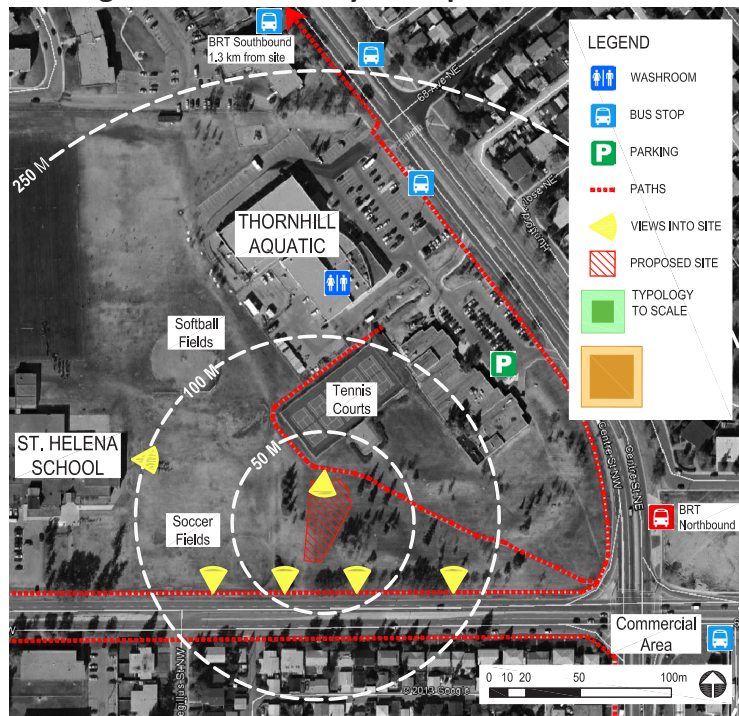
LOCATION

Huntington Hills site is located at 64th Avenue NW and Centre Street NW

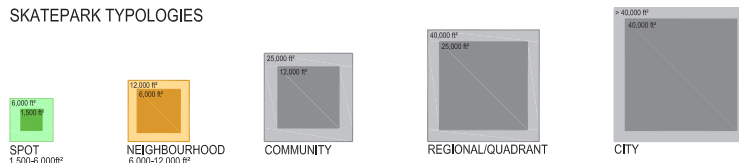
Huntington Hills is a north central neighbourhood. The proposed site is adjacent the Thornhill Aquatic Centre and St. Helena School. This site already includes baseball fields.



Huntington Hills Site Analysis Map



SKATEPARK TYPOLOGIES



Site Specific Citizen Comments

A local resident expressed concerns about criminal activity which may accompany a skatepark development. Especially due to the proximity to a Junior High School.

"kids are going to ride lets give them a place to do it safely"

"I think it is a great idea and will benefit the community and nearby schools."

"This will be such a great thing for our community!"

"Please bring this to Huntington"

Supportive Survey Comments: 13

Opposing Survey Comments: 1

Opposing Letters/Emails: 0

Discussion of Survey Results

Huntington Hills received a modest level of interest with 38 survey respondents amounting to 10% of all survey respondents. (See pie chart right).

Local skateboarders and residents are very supportive of the proposed location and there is zero adjacent neighbour opposition (See Bar Graph right). This is likely since it is at a significant park and the residential area is separated by an arterial road. However, the number of skateboarders that identify with the site is somewhat low, with only 15 user group respondents indicating they live near the site.

Adjacent resident concerns are quite minimal.

Conclusion

This is a suitable location with an easily developable site and reasonable separation from adjacent residents.

There is a good opportunity to integrate skatepark design within the site. Adjacent road traffic will mitigate skatepark noise, and the location adjacent 64th Avenue NW will provide casual surveillance to mitigate against undesirable activities.

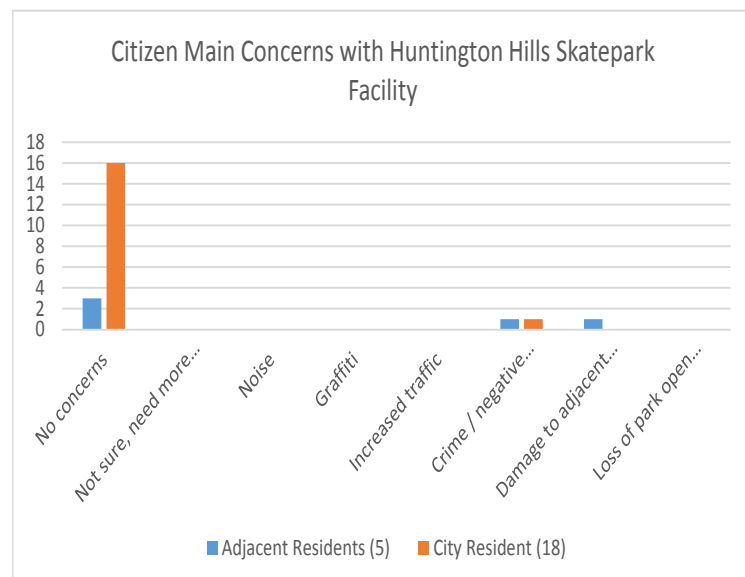
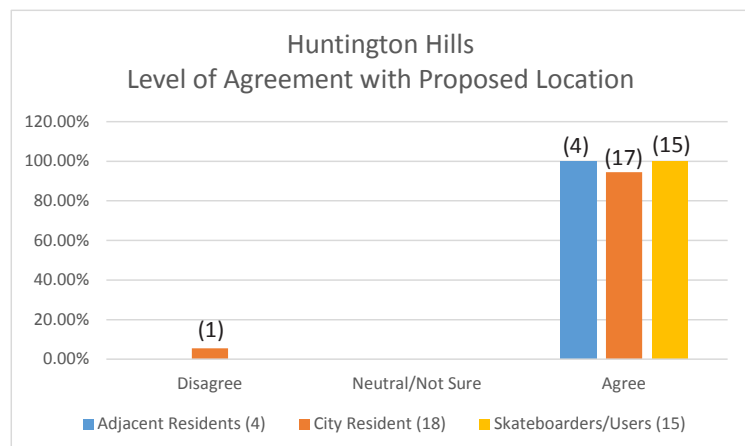
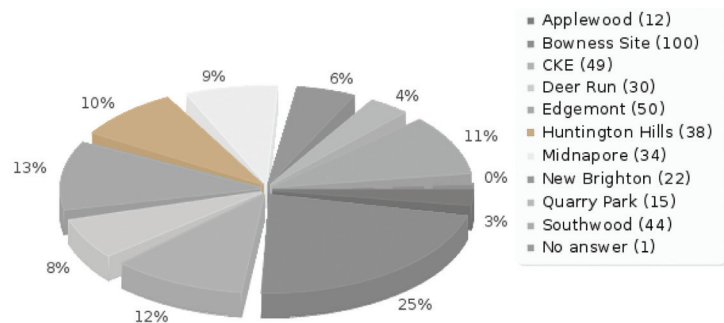
The local skateboarder support is low to modest. However, it is located along local bus routes and BRT, and is a convenient destination within the network.

Recommendations

Due to its strategic North Central location in the Network, Huntington Hills is an excellent location to demonstrate a skate spot or neighbourhood level skatepark.

Move forward with the design of a spot or neighbourhood scale skatepark to be implemented in the first phase of skatepark development.

Survey Respondents that Live Closest to Huntington Hills

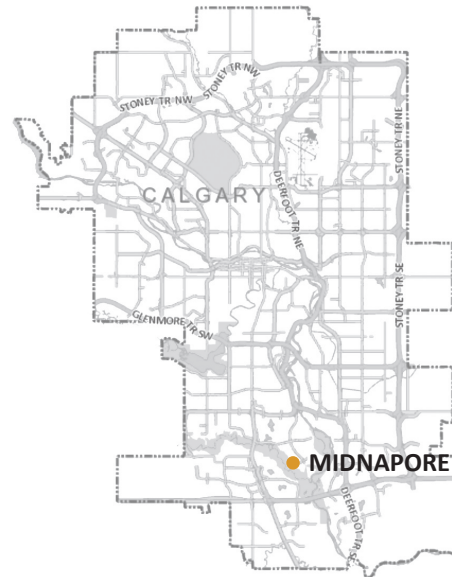
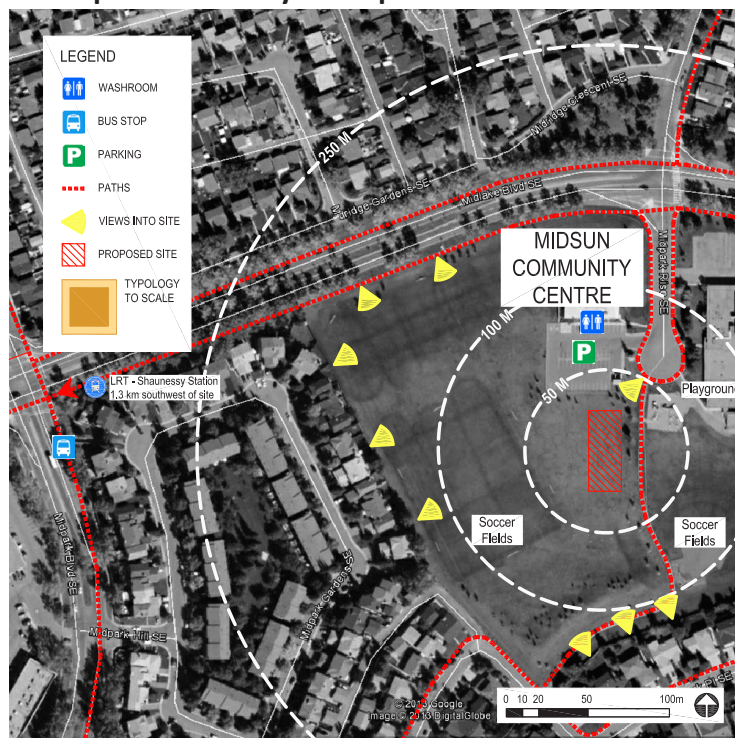
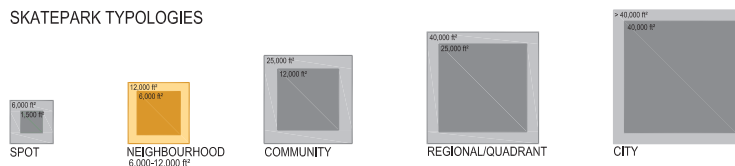


Note: Due to incomplete online submissions there may be minor discrepancies between pie chart respondent totals and bar graph response levels.

PROPOSED SITE**3.7 MIDNAPORE - MIDSUN COMMUNITY CENTRE****LOCATION**

Midnapore site is located at Midlake Blvd SE and Midpark Rise SE

The Midnapore site is located at the Midsun Community Centre just north of Midnapore Lake. It is within 1.3km of the Shaunessey LRT station.

**Midnapore Site Analysis Map****SKATEPARK TYPOLOGIES****Site Specific Citizen Comments**

Local residents raised a number of concerns, most notably noise, which they suggest reverberates very well through the park space and will especially disturb summer evenings. There is also concern that ambient light from existing buildings will keep the park in use later than desired.

The location also raises concern as the site is relatively secluded away from the road. This in combination with the current reputation for undesirable late night activities will compound the current problem.

Finally, there is concern raised about conflict between age groups, as the park is used by Early Childhood services and elementary schools during the day.

"Midnapore would be the most convenient for a skatepark in the southeast area because it is very close to Shaunessey train station, and easiest to bus to."

"Would love to have a skate park in the Deep"

South:) the age of the kids is perfect for this type of park."

"The travelling/rotating park the city offers is great, but I think it has proven there is a greater demand for something more permanent. Having a place for kids to actually go, keeps them out of trouble, offers a place to socialize, focuses on physical activity and keeps them in an open area in the community. "

Supportive Survey Comments: 12
Opposing Survey Comments: 1
Opposing Letters/Emails: 3

Discussion of Survey Results

Midnapore received a modest level of interest with 34 survey respondents amounting to 9% of all survey respondents. (See pie chart right).

Local skateboarders and residents are very supportive of the proposed location and have minimal concerns. (See Bar Graphs right).

Conclusion

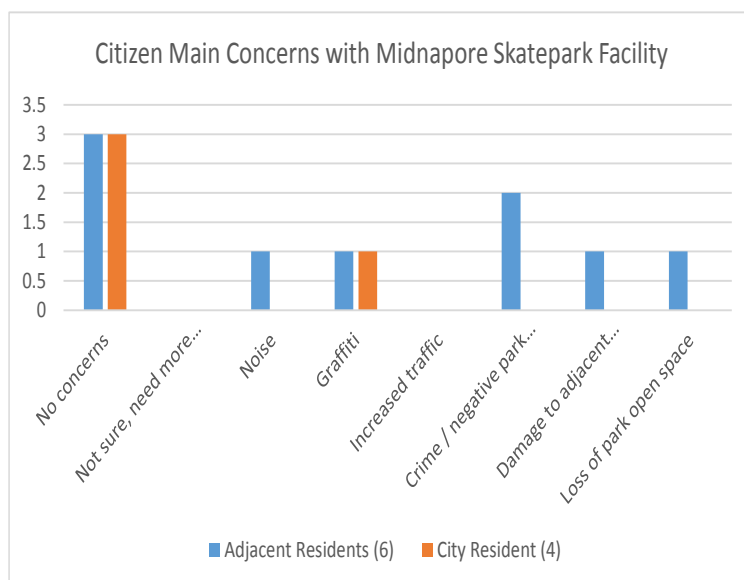
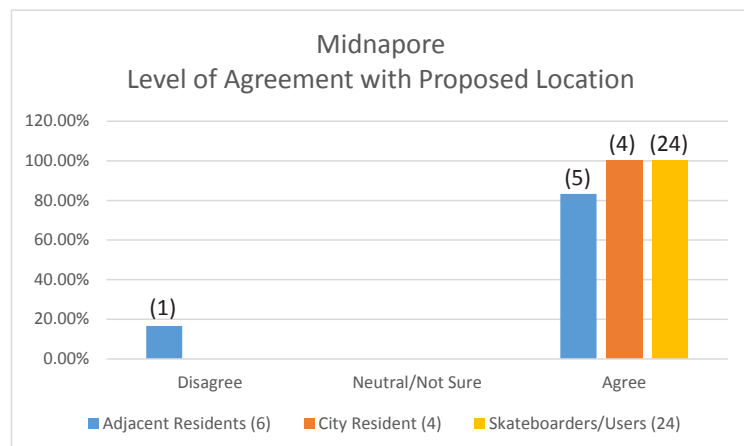
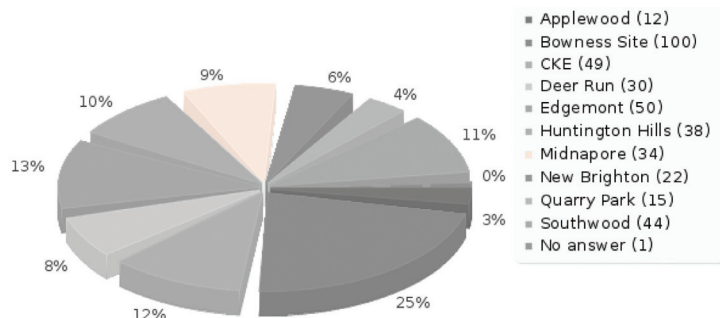
This is a good site with strong support from residents. Adjacent resident concerns should be mitigated through design.

Recommendations

Move forward with the design of a neighbourhood scale skatepark to be implemented in the first phase of skatepark development.

Concerns over noise travel and visibility of the site may be addressed through final skatepark location and design.

Survey Respondents that Live Closest to Midnapore



3

PROPOSED SITE**3.8 NEW BRIGHTON - NEW BRIGHTON
RECREATION ATHLETIC PARK****LOCATION**

New Brighton Neighbourhood at the 130th Avenue SE and 52nd Street SE.

New Brighton park is a new recreation facility in the emerging Southeast neighbourhood.

**New Brighton Site Analysis Map****Site Specific Citizen Comments**

"I would very much like to see new community skate parks built. My neighborhood has many young people who skateboard and it would be great for them to have an appropriate place to develop their skills and interact together ...We access various mobile skate parks in the summer and also have driven out to Airdrie, Cochrane, Banff, Canmore, Strathmore, Langdon, Chestermere, Olds and Red Deer for the sole purpose of skateboarding. We would be thrilled to have better facilities closer to home."

Supportive Survey Comments: 9

Opposing Survey Comments: 0

Opposing Letters/Emails: 0

SKATEPARK TYPOLOGIES

Discussion of Survey Results

New Brighton received a low level of interest with 22 survey respondents amounting to 6% of all survey respondents. (See pie chart right). This low level may have to do with the location on the edge of an emerging neighbourhood.

Local skateboarders and residents are very supportive of the proposed location with zero opposed to the location (See Bar Graph right).

Adjacent resident concerns are minimal but touch on all concerns listed in the survey (See Bar Graph right).

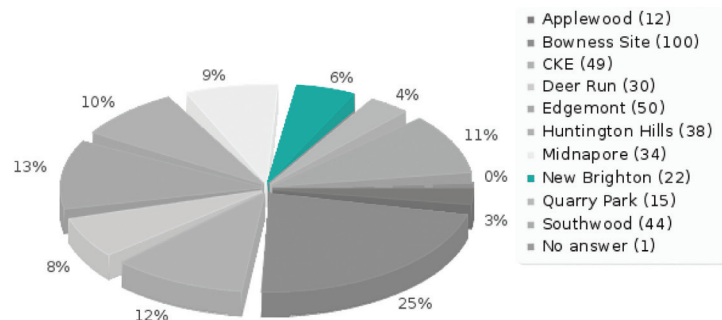
Conclusion

This is a suitable location with an easily developable site. The local skateboarder support is low to modest. However, this site will put a park in the City's southeast neighbourhoods which is integral to the development of a City-wide skatepark network and growth of Calgary.

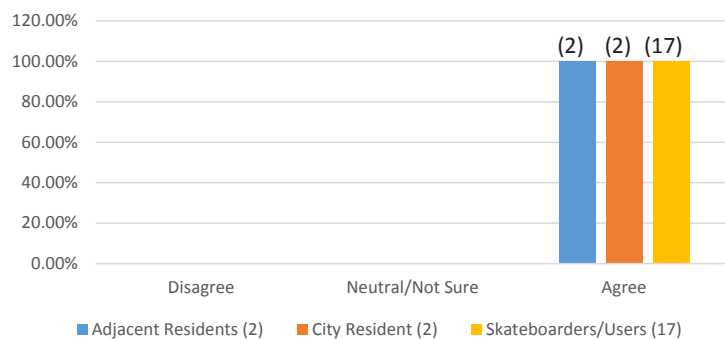
Recommendations

Due to the existing construction schedule for the greater park, it would be prudent to delay start of construction until 2015. However, detailed design should initiate with the 2014 priority sites.

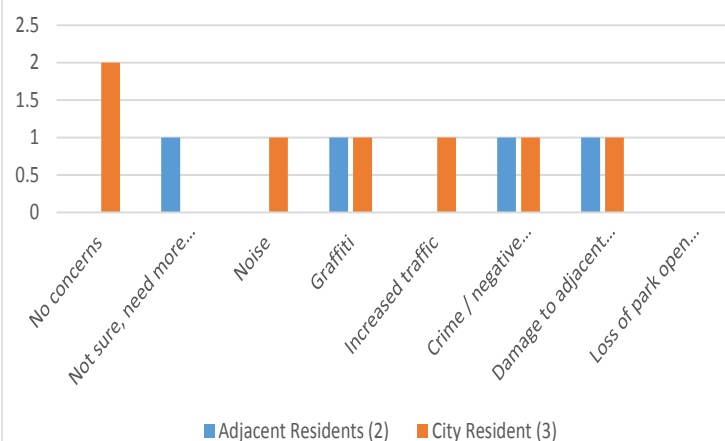
Survey Respondents that Live Closest to New Brighton



New Brighton
Level of Agreement with Proposed Location



Citizen Main Concerns with
New Brighton Skatepark Facility



Note: Due to incomplete online submissions there may be minor discrepancies between pie chart respondent totals and bar graph response levels.

3

PROPOSED SITE

3.9 QUARRY PARK - QUARRY COMMUNITY CENTRE

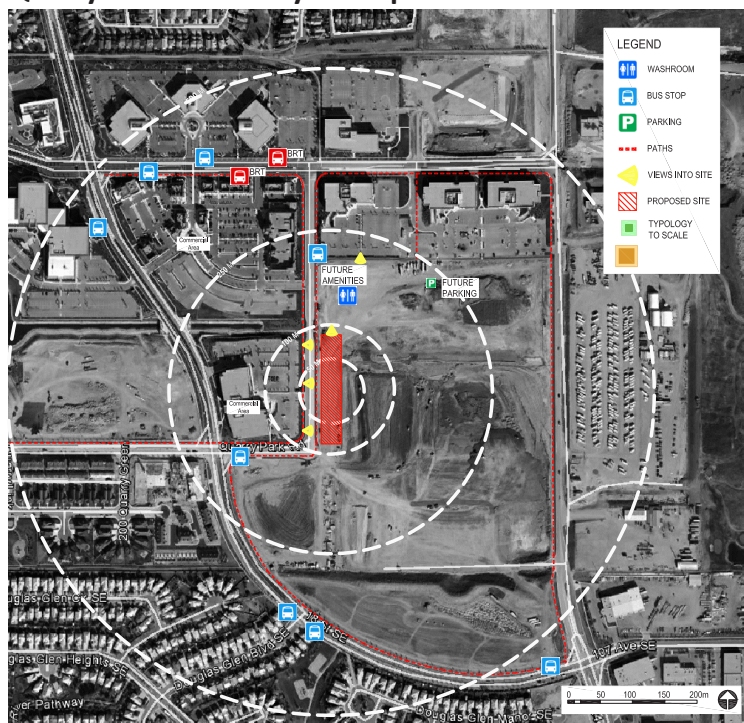
LOCATION

Quarry Park is currently under construction and will be located at Quarry Park Blvd SE and 24th Street SE.

The Quarry Park Recreation Centre promises to be an expansive state of the art sport and leisure facility designed to serve a large collection of South East Calgary communities. The immediate context of the recreation centre is unique as it is comprised of a mixture of commercial office buildings and retail outlets.



Quarry Park Site Analysis Map



Site Specific Citizen Comments

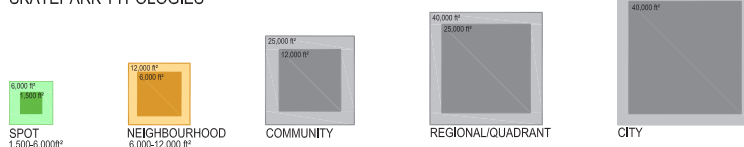
A resident suggested that associated food vending and picnic benches would complement the skatepark.

A skateboarder mentioned there are a lot of skateboarders in the Riverbend/Lynwood/Quarry Park area. While they are unlikely to fill out a survey they would find more productive activities at a skatepark.

"All the good skateparks are too far away. We need some closer to south calgary"

Supportive Survey Comments: 5
Opposing Survey Comments: 0
Opposing Letters/Emails: 0

SKATEPARK TYPOLOGIES



Discussion of Survey Results

Quarry Park received a low level of interest with 15 survey respondents amounting to 4% of all survey respondents. (See pie chart right). This low level may have to do with the location in the centre of an emerging neighbourhood.

Local skateboarders and residents are very supportive of the proposed location with no residents opposed to the location (See Bar Graph right).

Adjacent resident concerns are minimal but touch on graffiti, Crime/negative user group and Damage to adjacent park features (See Bar Graph right).

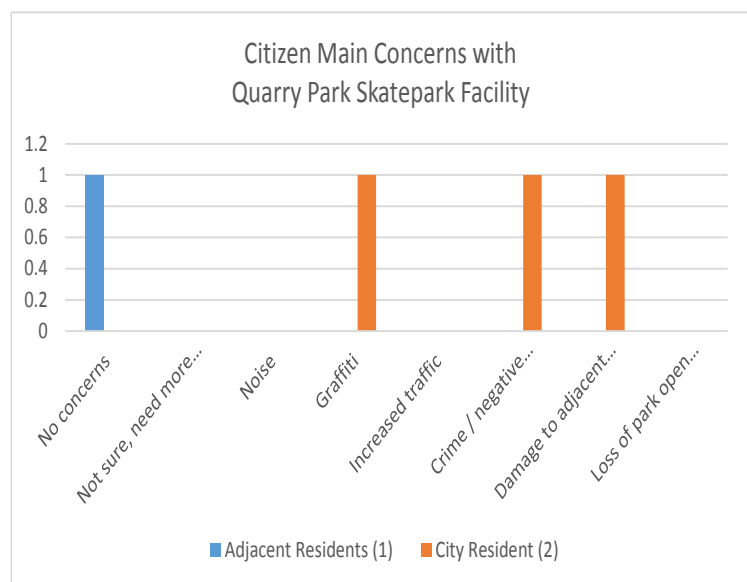
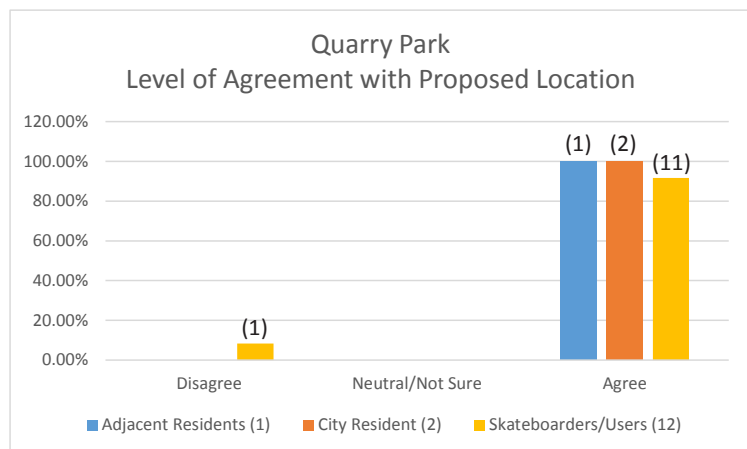
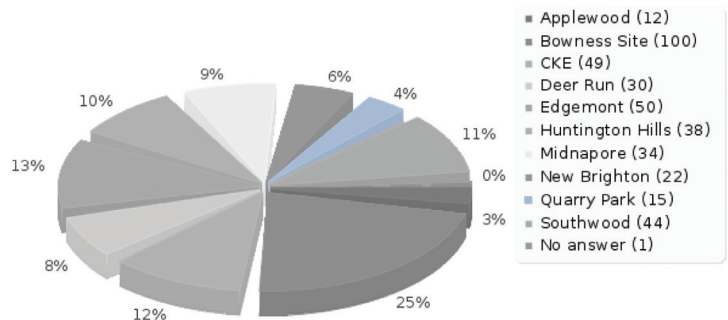
Conclusion

This is a suitable location with an easily developable site. The local skateboarder support is low to modest. This site will put a park in the City's SouthEast neighbourhoods which will benefit the City's overall skatepark network.

Recommendations

Due to uncertainty with the future community centre development, this site will be delayed until a future development phase. Due to the lack of adjacent residents this park should consider local adjacent businesses during design, which should focus on creating an urban skate plaza.

Survey Respondents that Live Closest to Quarry Park



PROPOSED SITE

3.10 SOUTHWOOD

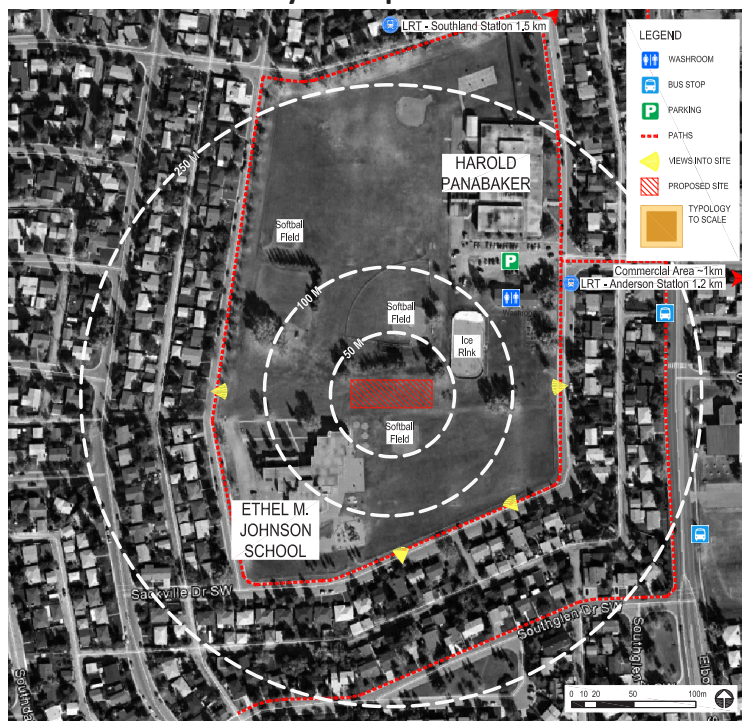
LOCATION

Southwood Alternate site is located at Sackville Drive SW and Sabrina Road SW

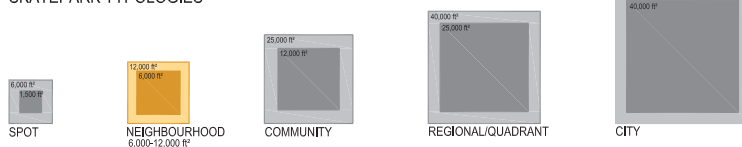
This site is located in the heart of the Southwood neighbourhood between two schools with baseball diamonds and outdoor ice rink. It is also just over a kilometre from the Southwood C-Train station.



Southwood Site Analysis Map



SKATEPARK TYPOLOGIES



Site Specific Citizen Comments

Citizens raised concerns regarding noise, graffiti, undesirable behaviour/gangs and on-street parking being taken to capacity.

Other concerns related to providing adequate amenities, such as, washrooms and garbage collection.

It was noted that the baseball diamond to the south of the proposed skatepark site may pose a safety hazard as foul balls are common.

"Thank You very much for considering on adding new skate parks in Calgary. My son and his friends love to Board, and the one downtown is too far, when most of them don't have any money. Would be awesome to get one in Southwood area."

"I am fully supportive of this initiative. My young children may grow into skateboarders, scooter users, etc. it adds to my community. As a community resident and board member, I plan festivals and events and this will be a great addition to possibly"

bring in different events to the community.”

“A skatepark would provide youth in our area a place to engage in physical activity in a contained local environment. There are limited such amenities close to Southwood.”

Supportive Survey Comments: 16

Opposing Survey Comments: 1

Opposing Letters/Emails: 2

Discussion of Survey Results

Southwood received a modest level of interest with 44 survey respondents amounting to 11% of all survey respondents. (See pie chart right).

Local skateboarders and residents are generally very supportive of the proposed location (See Bar Graph right).

Adjacent resident concerns are minimal but touch on graffiti, increased traffic, Crime/negative user group and Damage to adjacent park features (See Bar Graph right).

Conclusion

This is a suitable location with an easily developable site and a high level of local skateboarder support.

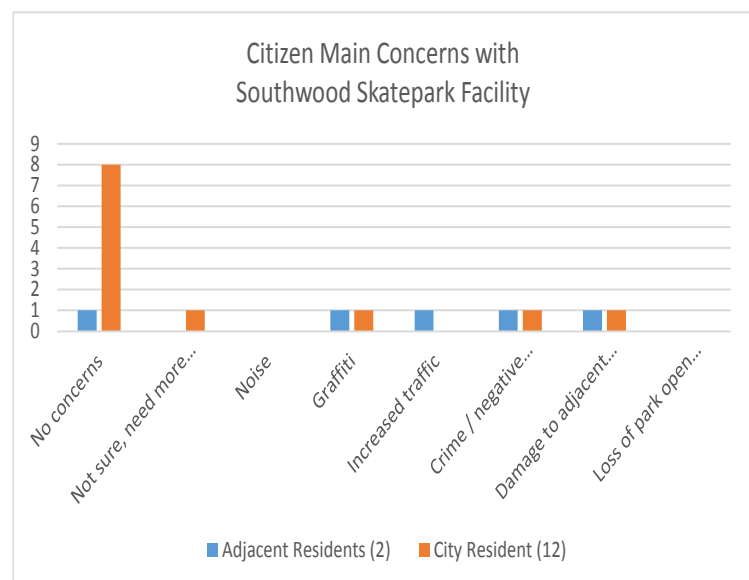
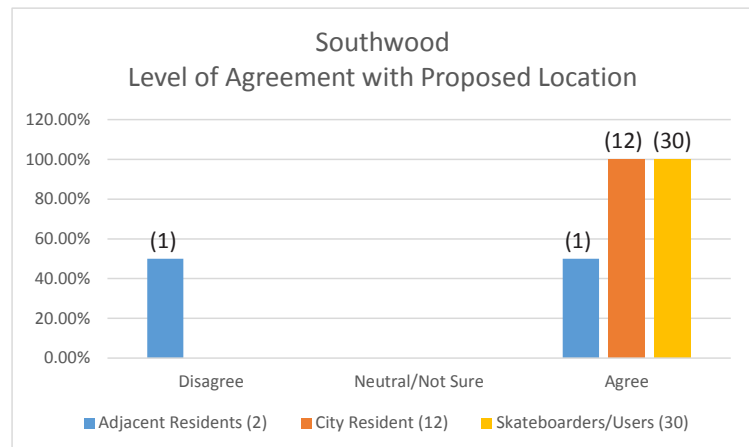
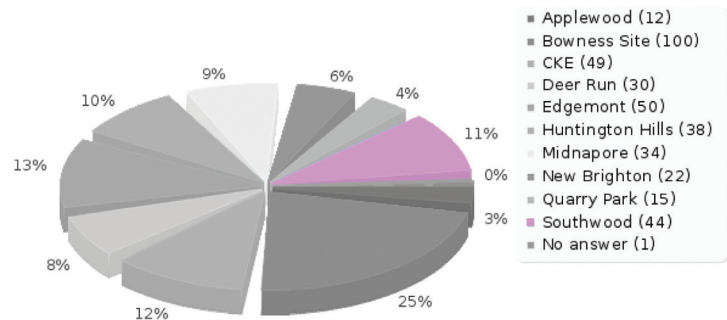
Recommendations

Due to its South Central location in the Network, Southwood is an excellent location to demonstrate a neighbourhood level skatepark.

Work to mitigate any concerns through design. This may include ensuring good sightlines to the skatepark, or proposing an enhanced backstop for the adjacent baseball diamond.

Move forward with the design of a neighbourhood scale skatepark to be implemented in the first phase of skatepark development.

Survey Respondents that Live Closest to Southwood



4. Conclusions

1. Recommend that the below parks be selected for immediate implementation and progression to design phase:

2014 Priorities	Typology
Bowness	Neighbourhood/Community
Chinook Park, Kelvin Grove & Eagle Ridge	Spot (Small end of range ~ 2,000ft ²)
Deer Run	Neighbourhood
Edgemont	Neighbourhood/Community
Huntington Hills	Spot/Neighbourhood
Midnapore	Neighbourhood
New Brighton	Neighbourhood
Southwood	Neighbourhood

2. Recommend that the below parks be re-evaluated in future development phases:

2015 - Reconsider	Typology
Applewood	Spot
Quarry Park	Spot/Neighbourhood

City Project Manager

Hayden Kowel
 Sport Development Advisor & Alberta Games Consultant
 Sport and Partnership Development
 City of Calgary | Recreation | Mail code: #76
 T 403.268.1357 | F 403.268.5252 | C 403.620.0792
 P.O Box 2100, Stn. M, #76
 Calgary, AB, Canada T2P 2M5
 Location: 2808 Spiller Road SE

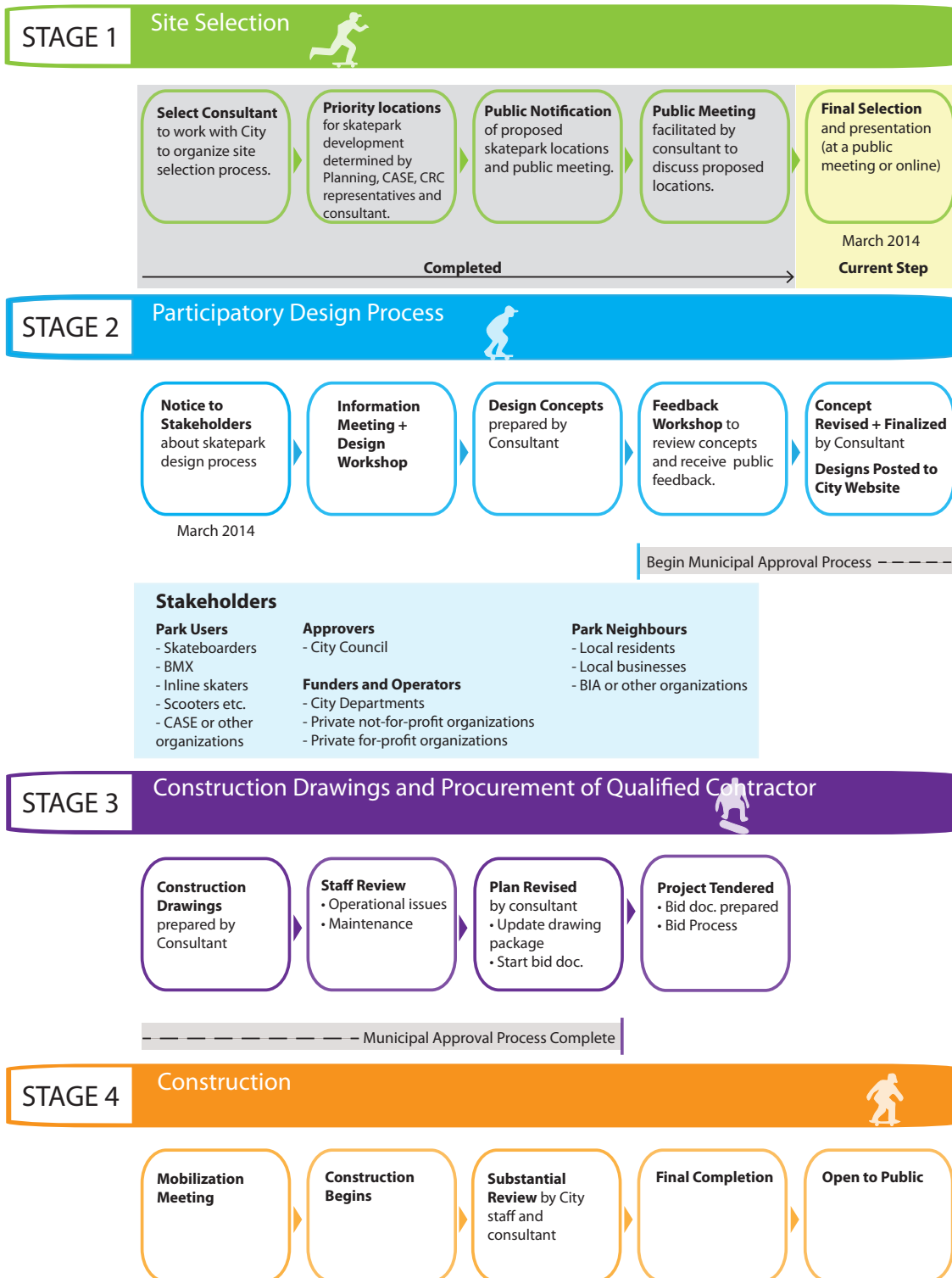
5. Next Steps

The sites that are approved by project staff for implementation will immediately begin the Stage 2: Participatory Design Process. See Process Flowchart (right) for all steps from design through construction.

It is anticipated that a few skateparks may be completed in the Autumn 2014, with with the majority of skateparks completed in 2015.

Phase 2 site selection for additional Network development will begin this summer. (2014)

Process Flowchart



5