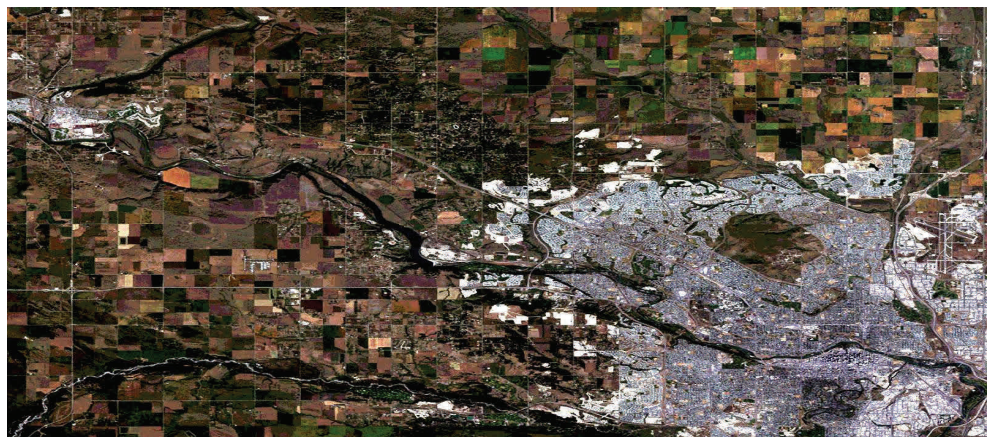




4th Quarter 2013 Statistical Report

Compiled by: Centralized Analysis Unit
CIAS, Strategic Services Division
© Calgary Police Service 2014



The Calgary Police Service provides this information in good faith but it provides no warranty, nor accepts any liability arising from any incorrect, incomplete or misleading information.



Table of Contents

| | |
|--|-----------------|
| <i>Calgary Crime Statistics – Static Numbers.....</i> | <i>1</i> |
| <i> Person Crimes – Static Numbers.....</i> | <i>2</i> |
| <i> Property Crimes – Static Numbers.....</i> | <i>3</i> |
| <i> Other Criminal Code Crimes – Static Numbers.....</i> | <i>4</i> |
| <i> Selected Other Crimes – Static Numbers.....</i> | <i>5</i> |
| <i>Calgary Disorder Statistics – Calls for Service.....</i> | <i>6</i> |
| <i>Domestic Related – Static Numbers.....</i> | <i>7</i> |
| <i>Youth Related – Static Numbers.....</i> | <i>8</i> |

REPORT NOTES

Most of the statistical data in this report is derived from the Police Information Management System (PIMS) and compiled by the Centralized Analysis Unit. Using static numbers allows us to compare crime levels at a specific point in time and make an accurate determination of increases or decreases. Unless otherwise stated, previous years' data contained in this report reflect the number of offences reported in the original publication. Although late reporting may occur, and offences may continue to be cleared as time passes, these new events are not taken into account when preparing this statistical report. It is important to note that cases are often cleared months and sometimes years later. Cases "cleared by charge" and those "cleared otherwise" are included in these totals.



Calgary Crime Statistics - Static Numbers

The static crime numbers in this page are derived from historical Calgary Police Service statistical reports. These statistics are used in order to make a fair comparison using data which has not been allowed to increase due to late reporting of crime. Using static numbers allows us to compare crime levels at a specific point in time and make an accurate determination of increases or decreases.

4TH QUARTER 2013

| | 4th Quarter | | | | Year to Date | | | | |
|---|--------------------|--------------|-------------------------|----------------------|--------------------|--------------|-------------------------|----------------------|-------------------|
| | Number of Offences | | 5yr Ave (2008to2012) | % Change (5 Year) | Number of Offences | | 5yr Ave (2008to2012) | % Change (5 Year) | % Cleared 2013 |
| 2012 | 2013 | 2012 | | | 2013 | | | | |
| PERSON CRIMES | | | | | | | | | |
| Homicide | 5 | 5 | 4.4 | 13.6% | 18 | 22 | 18.8 | 17.0% | 86.4% |
| Other Offences Causing Death | 0 | 0 | 0.2 | N/A | 0 | 0 | 0.6 | N/A | N/A |
| Attempted Homicide | 3 | 2 | 7.8 | -74.4% | 11 | 13 | 22.0 | -40.9% | N/A |
| Sex Offences | 130 | 140 | 146.6 | -4.5% | 804 | 779 | 761.2 | 2.3% | 31.5% |
| Robbery: | | | | | | | | | |
| Financial | 7 | 7 | 11.0 | -36.4% | 26 | 34 | 45.8 | -25.8% | 58.8% |
| Commercial | 52 | 85 | 81.6 | 4.2% | 202 | 207 | 285.2 | -27.4% | 34.8% |
| Person | 132 | 131 | 162.2 | -19.2% | 606 | 588 | 720.8 | -18.4% | 21.8% |
| Home Invasion | 9 | 11 | 14.8 | -25.7% | 39 | 44 | 62.8 | -29.9% | 22.7% |
| Total Robbery | 200 | 234 | 269.6 | -13.2% | 873 | 873 | 1114.6 | -21.7% | 26.3% |
| Assault: | | | | | | | | | |
| Level 3 - Aggravated | 28 | 22 | 27.0 | -18.5% | 108 | 110 | 109.6 | 0.4% | 73.6% |
| Level 2 - Weapon/Bodily Harm | 289 | 333 | 333.4 | -0.1% | 1295 | 1427 | 1436.0 | -0.6% | 58.5% |
| Level 1 - Common Assault | 883 | 868 | 919.4 | -5.6% | 3680 | 3621 | 3865.8 | -6.3% | 68.4% |
| Assault Police Officer | 45 | 54 | 74.6 | -27.6% | 238 | 218 | 312.2 | -30.2% | 97.7% |
| Discharge Firearm with Intent | 1 | 4 | 7.0 | -42.9% | 13 | 14 | 13.8 | 1.4% | 57.1% |
| Other Assaults | 7 | 6 | 9.6 | -37.5% | 29 | 19 | 43.0 | -55.8% | 89.5% |
| Total Assault | 1253 | 1287 | 1371.0 | -6.1% | 5363 | 5409 | 5780.4 | -6.4% | 67.1% |
| Misc Person Crimes | 111 | 95 | 110.2 | -13.8% | 502 | 461 | 518.6 | -11.1% | 59.9% |
| TOTAL PERSON CRIMES | 1702 | 1763 | 1909.8 | -7.7% | 7571 | 7557 | 8216.2 | -8.0% | 58.4% |
| PROPERTY CRIMES | | | | | | | | | |
| Break and Enter: | | | | | | | | | |
| Residential B&E | 577 | 700 | 621.0 | 12.7% | 2554 | 2479 | 2563.8 | -3.3% | 15.8% |
| Commercial B&E | 580 | 511 | 589.8 | -13.4% | 2121 | 2022 | 2546.4 | -20.6% | 13.5% |
| Other B&E | 230 | 223 | 171.6 | 30.0% | 862 | 1045 | 755.0 | 38.4% | 8.8% |
| Unlawfully in Residence | 7 | 13 | 9.4 | 38.3% | 40 | 38 | 51.8 | -26.6% | 78.9% |
| Total Break and Enter | 1395 | 1447 | 1392.0 | 4.0% | 5578 | 5584 | 5917.2 | -5.6% | 14.1% |
| Theft | 4134 | 4533 | 4712.2 | -3.8% | 19180 | 19667 | 21216.2 | -7.3% | 22.0% |
| Vehicle Theft (including attempts) | 1138 | 1339 | 1205.0 | 11.1% | 4441 | 5137 | 5118.8 | 0.4% | 8.6% |
| Fraud Related | 500 | 506 | 497.2 | 1.8% | 2427 | 2547 | 2576.8 | -1.2% | 45.2% |
| Other Property Crimes | 1542 | 1664 | 1885.6 | -11.8% | 7597 | 7058 | 8648.6 | -18.4% | 25.5% |
| TOTAL PROPERTY CRIMES | 8709 | 9489 | 9692.0 | -2.1% | 39223 | 39993 | 43477.6 | -8.0% | 21.2% |
| OTHER CRIMINAL CODE | | | | | | | | | |
| Vice | 1 | 36 | 40.0 | -10.0% | 66 | 132 | 156.4 | -15.6% | 98.5% |
| Gaming | 0 | 0 | 0.4 | N/A | 1 | 1 | 4.4 | -77.3% | N/A |
| Weapon Related | 247 | 198 | 287.6 | -31.2% | 1059 | 943 | 1313.2 | -28.2% | 98.8% |
| Misc | 1519 | 1430 | 1612.2 | -11.3% | 6428 | 6047 | 7324.6 | -17.4% | 90.9% |
| TOTAL OTHER CRIMINAL CODE | 1767 | 1664 | 1976.6 | -15.8% | 7554 | 7123 | 8798.6 | -19.0% | 92.1% |
| TOTAL OVERALL CRIMINAL CODE | 12178 | 12916 | 13470.5 | -4.1% | 54348 | 54673 | 60499.0 | -9.6% | 35.6% |
| (excluding traffic) | | | | | | | | | |
| SELECTED OTHER | | | | | | | | | |
| Criminal Code Traffic | 813 | 726 | 832.8 | -12.8% | 3462 | 2944 | 3473.2 | -15.2% | 0.0% |
| Drugs | 369 | 409 | 397.2 | 3.0% | 1760 | 1732 | 1938.0 | -10.6% | 0.0% |
| Selected Non Criminal Code | | | | | | | | | |
| Accidental/Sudden Death | 213 | 206 | 182.0 | 13.2% | 745 | 734 | 653.8 | 12.3% | N/A |
| Missing Persons | 756 | 583 | 723.2 | -19.4% | 3163 | 2832 | 3166.4 | -10.6% | N/A |
| Court Order | 275 | 270 | 237.0 | 13.9% | 1105 | 1231 | 961.6 | 28.0% | N/A |
| Domestic Information | 3174 | 3203 | 2978.2 | 7.5% | 12667 | 13120 | 11739.2 | 11.8% | N/A |
| Domestic Standby | 210 | 184 | 176.2 | 4.4% | 876 | 886 | 765.8 | 15.7% | N/A |
| Total Selected Non Criminal Code | 4628 | 4446 | 4266.6 | 4.2% | 18556 | 18803 | 17286.8 | 8.8% | N/A |
| Statutes (Federal/Provincial/Municipal) | 206 | 156 | 205.4 | -24.1% | 942 | 811 | 961.4 | -15.6% | 99.5% |
| TOTAL SELECTED OTHER | 6016 | 5737 | 5702.0 | 0.6% | 24720 | 24290 | 23659.4 | 2.7% | 14.7% |

Source: Static Data: (PIMS: January 2009 - January 2014)



Person Crime - Static Numbers

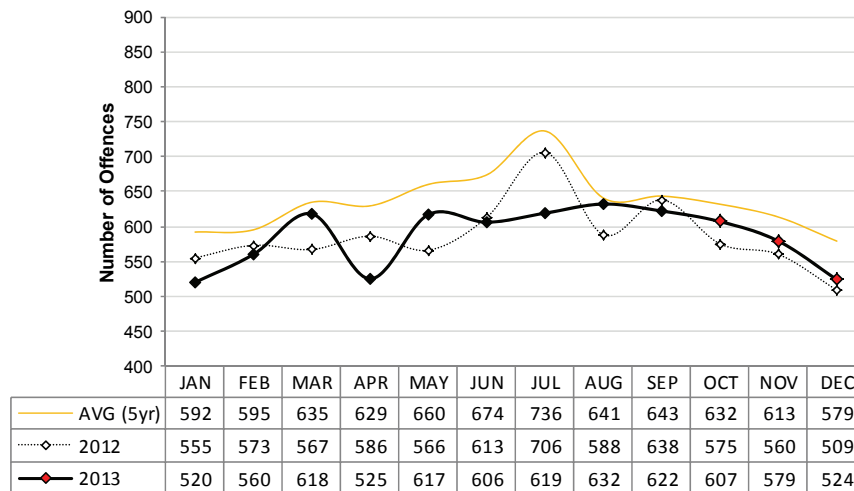
The static crime numbers in this page are derived from historical Calgary Police Service statistical reports. These statistics are used in order to make a fair comparison using data which has not been allowed to increase due to late reporting of crime. Using static numbers allows us to compare crime levels at a specific point in time and make an accurate determination of increases or decreases.

4TH QUARTER 2013

| | 4th Quarter Number of Offences | | | | Year to Date Number of Offences | | | | |
|-------------------------------|-----------------------------------|-------------|-------------------------|----------------------|------------------------------------|-------------|-------------------------|----------------------|-------------------|
| | 2012 | 2013 | 5yr Ave (2008to2012) | % Change (5 Year) | 2012 | 2013 | 5yr Ave (2008to2012) | % Change (5 Year) | % Cleared 2013 |
| PERSON CRIMES | | | | | | | | | |
| Homicide | 5 | 5 | 4.4 | 13.6% | 18 | 22 | 18.8 | 17.0% | 86.4% |
| Other Offences Causing Death | 0 | 0 | 0.2 | N/A | 0 | 0 | 0.6 | N/A | N/A |
| Attempted Homicide | 3 | 2 | 7.8 | -74.4% | 11 | 13 | 22.0 | -40.9% | N/A |
| Sex Offences | 130 | 140 | 146.6 | -4.5% | 804 | 779 | 761.2 | 2.3% | 31.5% |
| Robbery: | | | | | | | | | |
| Financial | 7 | 7 | 11.0 | -36.4% | 26 | 34 | 45.8 | -25.8% | 58.8% |
| Commercial | 52 | 85 | 81.6 | 4.2% | 202 | 207 | 285.2 | -27.4% | 34.8% |
| Person | 132 | 131 | 162.2 | -19.2% | 606 | 588 | 720.8 | -18.4% | 21.8% |
| Home Invasion | 9 | 11 | 14.8 | -25.7% | 39 | 44 | 62.8 | -29.9% | 22.7% |
| Total Robbery | 200 | 234 | 269.6 | -13.2% | 873 | 873 | 1114.6 | -21.7% | 26.3% |
| Assault: | | | | | | | | | |
| Level 3 - Aggravated | 28 | 22 | 27.0 | -18.5% | 108 | 110 | 109.6 | 0.4% | 73.6% |
| Level 2 - Weapon/Bodily Harm | 289 | 333 | 333.4 | -0.1% | 1295 | 1427 | 1436.0 | -0.6% | 58.5% |
| Level 1 - Common Assault | 883 | 868 | 919.4 | -5.6% | 3680 | 3621 | 3865.8 | -6.3% | 68.4% |
| Assault Police Officer | 45 | 54 | 74.6 | -27.6% | 238 | 218 | 312.2 | -30.2% | 97.7% |
| Discharge Firearm with Intent | 1 | 4 | 7.0 | -42.9% | 13 | 14 | 13.8 | 1.4% | 57.1% |
| Other Assaults | 7 | 6 | 9.6 | -37.5% | 29 | 19 | 43.0 | -55.8% | 89.5% |
| Total Assault | 1253 | 1287 | 1371.0 | -6.1% | 5363 | 5409 | 5780.4 | -6.4% | 67.1% |
| Misc Person Crimes | 111 | 95 | 110.2 | -13.8% | 502 | 461 | 518.6 | -11.1% | 59.9% |
| TOTAL PERSON CRIMES | 1702 | 1763 | 1909.8 | -7.7% | 7571 | 7557 | 8216.2 | -8.0% | 58.4% |

Source: Static Data (PIMS: January 2009 - January 2014)

Person Crime-Static Numbers
YTD Jan 01 to Dec 31 2013





Property Crime - Static Numbers

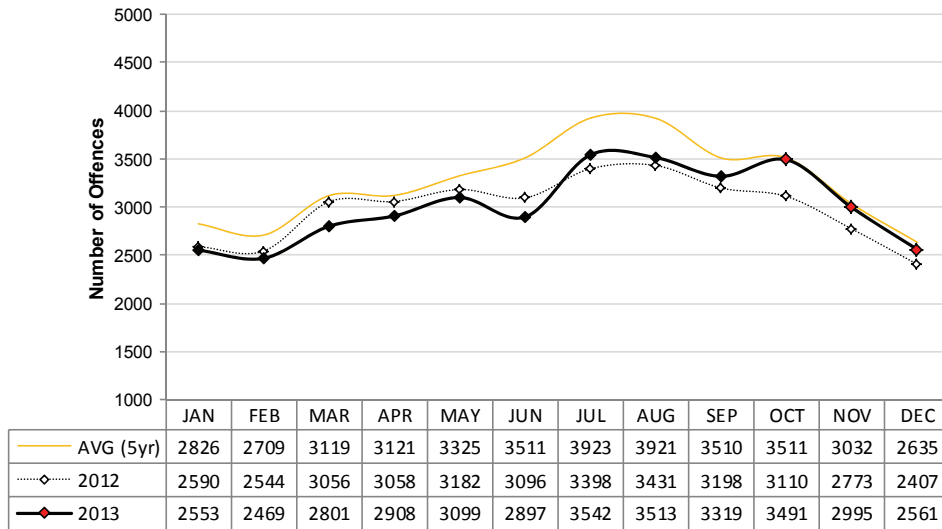
The static crime numbers in this page are derived from historical Calgary Police Service statistical reports. These statistics are used in order to make a fair comparison using data which has not been allowed to increase due to late reporting of crime. Using static numbers allows us to compare crime levels at a specific point in time and make an accurate determination of increases or decreases.

4TH QUARTER 2013

| | 4th Quarter Number of Offences | | | | Year to Date Number of Offences | | | | |
|------------------------------------|-----------------------------------|-------------|--------------------------|----------------------|------------------------------------|--------------|--------------------------|----------------------|-------------------|
| | 2012 | 2013 | 5yr Avge (2008to2012) | % Change (5 Year) | 2012 | 2013 | 5yr Avge (2008to2012) | % Change (5 Year) | % Cleared 2013 |
| PROPERTY CRIMES | | | | | | | | | |
| Break and Enter: | | | | | | | | | |
| Residential B&E | 577 | 700 | 621.0 | 12.7% | 2554 | 2479 | 2563.8 | -3.3% | 15.8% |
| Commercial B&E | 580 | 511 | 589.8 | -13.4% | 2121 | 2022 | 2546.4 | -20.6% | 13.5% |
| Other B&E | 230 | 223 | 171.6 | 30.0% | 862 | 1045 | 755.0 | 38.4% | 8.8% |
| Unlawfully in Residence | 7 | 13 | 9.4 | 38.3% | 40 | 38 | 51.8 | -26.6% | 78.9% |
| Break and Enter Firearms | 1395 | 1447 | 1392.0 | 4.0% | 5578 | 5584 | 5917.2 | -5.6% | 14.1% |
| Total Break and Enter | 1395 | 1447 | 1392.0 | 4.0% | 5578 | 5584 | 5917.2 | -5.6% | 14.1% |
| Theft | 4134 | 4533 | 4712.2 | -3.8% | 19180 | 19667 | 21216.2 | -7.3% | 22.0% |
| Vehicle Theft (including attempts) | 1138 | 1339 | 1205.0 | 11.1% | 4441 | 5137 | 5118.8 | 0.4% | 8.6% |
| Fraud Related | 500 | 506 | 497.2 | 1.8% | 2427 | 2547 | 2576.8 | -1.2% | 45.2% |
| Other Property Crimes | 1542 | 1664 | 1885.6 | -11.8% | 7597 | 7058 | 8648.6 | -18.4% | 25.5% |
| TOTAL PROPERTY CRIMES | 8709 | 9489 | 9692.0 | -2.1% | 39223 | 39993 | 43477.6 | -8.0% | 21.2% |

Source: Static Data (PIMS: January 2009 - January 2014)

Property Crime-Static Numbers
YTD Jan 01 to Dec 31 2013





Other CC Crime - Static Numbers

The static crime numbers in this page are derived from historical Calgary Police Service statistical reports. These statistics are used in order to make a fair comparison using data which has not been allowed to increase due to late reporting of crime. Using static numbers allows us to compare crime levels at a specific point in time and make an accurate determination of increases or decreases.

4TH QUARTER 2013

| OTHER CRIMINAL CODE | 4th Quarter Number Of Offences | | | | Year to Date Number of Offences | | | | |
|----------------------------------|-----------------------------------|-------------|-------------------------|----------------------|------------------------------------|-------------|-------------------------|----------------------|-------------------|
| | 2012 | 2013 | 5yr Ave (2008to2012) | % Change (5 Year) | 2012 | 2013 | 5yr Ave (2008to2012) | % Change (5 Year) | % Cleared 2013 |
| | | | | | | | | | |
| Vice | 1 | 36 | 40.0 | -10.0% | 66 | 132 | 156.4 | -15.6% | 98.5% |
| Gaming | 0 | 0 | 0.4 | N/A | 1 | 1 | 4.4 | -77.3% | N/A |
| Weapon Related | 247 | 198 | 287.6 | -31.2% | 1059 | 943 | 1313.2 | -28.2% | 98.8% |
| Misc | 1519 | 1430 | 1612.2 | -11.3% | 6428 | 6047 | 7324.6 | -17.4% | 90.9% |
| TOTAL OTHER CRIMINAL CODE | 1767 | 1664 | 1976.6 | -15.8% | 7554 | 7123 | 8798.6 | -19.0% | 92.1% |

Source: Static Data (PIMS: January 2009 - January 2014)

WEAPONS & INTIMIDATION USAGE IN VIOLENT CRIME (MOST SERIOUS WEAPON PRESENT)

| WEAPON TYPE | 4th Quarter Number of Incidents | | | | Year to Date Number of Incidents | | | |
|--------------------|------------------------------------|-------------|-------------------------|----------------------|-------------------------------------|-------------|-------------------------|----------------------|
| | 2012 | 2013 | 5yr Ave (2008to2012) | % Change (5 Year) | 2012 | 2013 | 5yr Ave (2008to2012) | % Change (5 Year) |
| | | | | | | | | |
| Firearm | 49 | 65 | 57.6 | 12.8% | 197 | 211 | 240.2 | -12.2% |
| Edged Weapon | 111 | 171 | 150.2 | 13.8% | 476 | 601 | 601.2 | 0.0% |
| OC Spray | 47 | 44 | 31.2 | 41.0% | 162 | 191 | 109.0 | 75.2% |
| Club/Blunt Object | 22 | 17 | 30.4 | -44.1% | 114 | 90 | 132.8 | -32.2% |
| Other | 88 | 114 | 109.6 | 4.0% | 398 | 457 | 463.2 | -1.3% |
| Verbal Threat | 103 | 118 | 120.4 | -2.0% | 3305 | 3241 | 3516.6 | -7.8% |
| Physical Force | 995 | 954 | 1075.6 | -11.3% | 1354 | 1275 | 1475.0 | -13.6% |
| None Used | 73 | 62 | 72.8 | -14.8% | 345 | 312 | 343.0 | -9.0% |
| Unknown/Not Stated | 87 | 81 | 84.6 | -4.3% | 336 | 343 | 353.4 | -2.9% |
| TOTAL | 1575 | 1626 | 1732.4 | -6.1% | 6687 | 6721 | 7234.4 | -7.1% |

Source: Static Data. (PIMS: January 2009 - January 2014)

Unit of Count: Incident Count. Most serious weapon present per incident where at least one violent offence occurred.

Previous years' data will not match with this statistical report due to changes implemented to conform with Statistics Canada Uniform Crime Reporting rules.

2013 INJURY LEVEL OF VICTIMS BY WEAPON TYPE (MOST SERIOUS WEAPON USED)

| WEAPON TYPE | 4th Quarter Injury Level | | | | | Weapon Type | Year to Date Injury Level | | | | | Weapon Type |
|----------------------|-----------------------------|-----------|------------|-------------------------|------------|----------------|------------------------------|------------|-------------|-------------------------|-------------|----------------|
| | Death | Major | Minor | Unknown / Not Stated | No Injury | | Death | Major | Minor | Unknown / Not Stated | No Injury | |
| | | | | | | | | | | | | |
| Firearm | 2 | 5 | 8 | 0 | 4 | 19 | 3 | 15 | 38 | 0 | 10 | 66 |
| Edged Weapon | 2 | 27 | 45 | 1 | 3 | 78 | 13 | 78 | 177 | 1 | 19 | 288 |
| OC Spray | 0 | 1 | 69 | 0 | 0 | 70 | 0 | 1 | 278 | 1 | 1 | 281 |
| Club/Blunt Object | 1 | 1 | 12 | 0 | 2 | 16 | 1 | 10 | 64 | 0 | 4 | 79 |
| Other | 0 | 6 | 57 | 1 | 9 | 73 | 1 | 26 | 257 | 1 | 31 | 316 |
| Physical Force | 0 | 20 | 615 | 9 | 52 | 696 | 2 | 116 | 2753 | 24 | 246 | 3141 |
| Unknown/Not Stated | 0 | 7 | 13 | 202 | 741 | 963 | 2 | 15 | 51 | 745 | 2835 | 3648 |
| TOTAL INJURED | 5 | 67 | 819 | 213 | 811 | 1915 | 22 | 261 | 3618 | 772 | 3146 | 7819 |

Source: Static Data. (PIMS: January 2009 - January 2014)

Unit of Count: Victim injury level, in all violent offences.

¹ "Edged weapon" includes weapons classified as cutting and piercing instruments.

² "Other" weapons include any physical object not classified otherwise, such as fire, vehicle, body fluids, beverages and their containers, strangulation/ligature instruments, etc.



Selected Other Crime - Static Numbers

The static crime numbers in this page are derived from historical Calgary Police Service statistical reports. These statistics are used in order to make a fair comparison using data which has not been allowed to increase due to late reporting of crime. Using static numbers allows us to compare crime levels at a specific point in time and make an accurate determination of increases or decreases.

4TH QUARTER 2013

| | 4th Quarter Number of Offences | | | | Year to Date Number of Offences | | | | |
|---|-----------------------------------|-------------|-------------------------|----------------------|------------------------------------|--------------|-------------------------|----------------------|--------------|
| | 2012 | 2013 | 5yr Ave (2008to2012) | % Change (5 Year) | 2012 | 2013 | 5yr Ave (2008to2012) | % Change (5 Year) | % Cleared |
| | | | | | | | | | 2013 |
| SELECTED OTHER | | | | | | | | | |
| Criminal Code Traffic | 813 | 726 | 832.8 | -12.8% | 3462 | 2944 | 3473.2 | -15.2% | 0.0% |
| Drugs | 369 | 409 | 397.2 | 3.0% | 1760 | 1732 | 1938.0 | -10.6% | 0.0% |
| Selected Non Criminal Code ¹ | 4628 | 4446 | 4266.6 | 4.2% | 18556 | 18803 | 17286.8 | 8.8% | N/A |
| Statutes (Fed/Prov/Municipal) | 206 | 156 | 205.4 | -24.1% | 942 | 811 | 961.4 | -15.6% | 99.5% |
| TOTAL SELECTED OTHER | 6016 | 5737 | 5702.0 | 0.6% | 24720 | 24290 | 23659.4 | 2.7% | 14.7% |

Source: Static Data (PIMS: January 2009 - January 2014)

TRAFFIC COLLISIONS AND OFFENCES

| | 4th Quarter Number of Offences | | | | Year to Date Number of Offences | | | |
|--|-----------------------------------|--------------|-------------------------|----------------------|------------------------------------|--------------|-------------------------|----------------------|
| | 2012 | 2013 | 5yr Ave (2008to2012) | % Change (5 Year) | 2012 | 2013 | 5yr Ave (2008to2012) | % Change (5 Year) |
| | | | | | | | | |
| TRAFFIC | | | | | | | | |
| Fatalities ² | 8 | 11 | 8.0 | 37.5% | 34 | 40 | 28.8 | 38.9% |
| Fatal Collisions ³ | 8 | 9 | 7.4 | 21.6% | 32 | 37 | 26.8 | 38.1% |
| Injury Collisions | 704 | 729 | 686.4 | 6.2% | 2694 | 2790 | 2658.4 | 5.0% |
| Property Damage Collisions | 9252 | 11577 | 11168.6 | 3.7% | 36408 | 40368 | 42042.2 | -4.0% |
| E-Collision ⁴ Reports | 147 | 1581 | 68.8 | - | 446 | 2100 | 185.2 | - |
| Total Collisions | 10111 | 13896 | 11931.2 | 16.5% | 39580 | 45295 | 44912.6 | 0.9% |
| Total Parking Lot Collisions | 1483 | 1933 | 2290.6 | -15.6% | 7468 | 8555 | 9838.8 | -13.0% |
| Total Reportable Collisions⁵ | 8628 | 11963 | 9640.6 | 24.1% | 32112 | 36740 | 35073.8 | 4.8% |
| CC Traffic Offences | | | | | | | | |
| Impaired Operation | 779 | 696 | 797.8 | -12.8% | 3322 | 2800 | 3302.4 | -15.2% |
| Dangerous Driving | 34 | 30 | 35.0 | -14.3% | 140 | 144 | 170.8 | -15.7% |
| TOTAL CRIMINAL CODE | 813 | 726 | 832.8 | -12.8% | 3462 | 2944 | 3473.2 | -15.2% |

Source: Static data (PIMS: January 2009 - 2011, January 2014) and cumulative data (PIMS: January 2012 - January 2013). All CC traffic offences data is static.

NUMBER OF DRUG OFFENCES YEAR TO DATE

| | 2012 | 2013 | 5yr Ave (2008to2012) | % Change (5 Year) | % Cleared 2013 | 5yr Trend 2009-2013 |
|--------------------|-------------|-------------|-------------------------|----------------------|-------------------|------------------------|
| DRUGS | | | | | | |
| Demand | 1013 | 1037 | 975.7 | 6.3% | 100.0% | |
| Supply | 747 | 695 | 928.0 | -25.1% | 100.0% | |
| Total | 1760 | 1732 | 1903.7 | -18.8% | 100.0% | |
| Drug Type | | | | | | |
| Cocaine/Crack | 576 | 526 | 720.5 | -27.0% | 100.0% | |
| Cannabis | 1021 | 1037 | 1034.2 | 0.3% | 100.0% | |
| All Other Drugs | 163 | 169 | 149.0 | 13.4% | 100.0% | |
| TOTAL DRUGS | 1760 | 1732 | 1903.7 | -13.3% | 100.0% | |

Source: Static Data (PIMS: January 2009 - January 2014)

¹ Selected Non Criminal Code include: accidental/sudden death, missing persons, court order, domestic information, and domestic information standby.

² This number denotes the number of people killed as a result of a traffic collision.

³ The number of fatal collisions has been adjusted to adhere to Alberta Transportation guidelines governing motor vehicle collisions.

⁴ E-collision is a provincial data collection system which became operational in July 2009. At the time of printing of this report, a number of collision reports submitted into this system have yet to be downloaded into the CPS collision system where they can be classified based on severity and where it can be determined if they occurred in a parking lot and are thus excluded from the reportable number. E-collision reports are being downloaded to the CPS system daily which results in fluctuating counts of e-collision reports each quarter.

⁵ Total Reportable Collisions exclude collisions along private roadways or public parking lots.



Disorder Statistics - Calls for Service

The static crime numbers in this page are derived from historical Calgary Police Service statistical reports. These statistics are used in order to make a fair comparison using data which has not been allowed to increase due to late reporting of crime. Using static numbers allows us to compare crime levels at a specific point in time and make an accurate determination of increases or decreases.

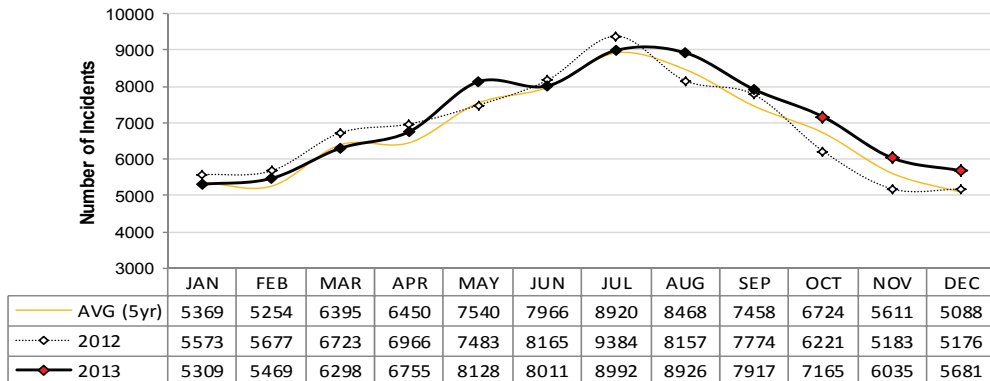
Calgary Disorder Statistics – CALLS FOR SERVICE

In addition to monitoring crime levels, the Calgary Police Service uses a range of incident types to record levels of "Social & Physical Disorder". The incident types selected for this disorder index are those which can have a negative impact on citizens' quality of life and perception of safety, particularly in public places. These incidents do not tend to be represented well in "traditional" crime statistics which have a propensity to focus more on person and property crime.

4TH QUARTER 2013 - PUBLIC GENERATED CALLS FOR SERVICE

| | 4th Quarter | | | | | | | Year To Date | | | | | | |
|--------------------------------|---------------------|--------------|--------------|----------------|--------------|-------------------|---------------|---------------------|--------------|--------------|----------------|---------------|-------------------|---------------|
| | Number Of Incidents | | | Change | | | | Number Of Incidents | | | Change | | | |
| | 2012 | 2013 | 5YR AVG | 2012-2013 N | % | 5YR AVG-2013 N | % | 2012 | 2013 | 5YR AVG | 2012-2013 N | % | 5YR AVG-2013 N | % |
| SOCIAL DISORDER | | | | | | | | | | | | | | |
| Disturbance | 2155 | 2213 | 2002 | 58 | 2.7% | 211 | 10.5% | 10126 | 10079 | 8831 | -47 | -0.5% | 1248 | 14.1% |
| Drugs | 417 | 464 | 452 | 47 | 11.3% | 12 | 2.7% | 2350 | 2291 | 2261 | -59 | -2.5% | 30 | 1.3% |
| Indecent Act | 77 | 103 | 100 | 26 | 33.8% | 3 | 3.0% | 591 | 594 | 581 | 3 | 0.5% | 13 | 2.2% |
| Intoxicated Person | 1124 | 1320 | 1097 | 196 | 17.4% | 223 | 20.3% | 5675 | 6044 | 5002 | 369 | 6.5% | 1042 | 20.8% |
| Juvenile Complaint | 217 | 244 | 428 | 27 | 12.4% | -184 | -42.9% | 1946 | 1550 | 2668 | -396 | -20.3% | -1118 | -41.9% |
| Landlord Tenant | 533 | 554 | 501 | 21 | 3.9% | 53 | 10.6% | 2287 | 2487 | 2076 | 200 | 8.7% | 411 | 19.8% |
| Mental Health Concern | 607 | 710 | 495 | 103 | 17.0% | 215 | 43.3% | 2481 | 2835 | 1951 | 354 | 14.3% | 884 | 45.3% |
| Neighbour Dispute | 343 | 417 | 316 | 74 | 21.6% | 101 | 31.9% | 1918 | 1896 | 1659 | -22 | -1.1% | 237 | 14.3% |
| Noise Complaint | 1185 | 1109 | 1346 | -76 | -6.4% | -237 | -17.6% | 6691 | 6163 | 7232 | -528 | -7.9% | -1069 | -14.8% |
| Party Complaint | 309 | 322 | 391 | 13 | 4.2% | -69 | -17.6% | 2493 | 2062 | 2522 | -431 | -17.3% | -460 | -18.2% |
| Possible Gunshots | 104 | 112 | 142 | 8 | 7.7% | -30 | -21.2% | 766 | 768 | 890 | 2 | 0.3% | -122 | -13.7% |
| Prostitution | 50 | 62 | 79 | 12 | 24.0% | -17 | -21.9% | 370 | 374 | 455 | 4 | 1.1% | -81 | -17.7% |
| Prowler | 85 | 132 | 80 | 47 | 55.3% | 52 | 65.4% | 456 | 555 | 346 | 99 | 21.7% | 209 | 60.2% |
| Speeder | 89 | 93 | 103 | 4 | 4.5% | -10 | -9.4% | 676 | 666 | 584 | -10 | -1.5% | 82 | 14.0% |
| Suspicious Auto | 1681 | 1907 | 1800 | 226 | 13.4% | 107 | 6.0% | 8018 | 8322 | 7895 | 304 | 3.8% | 427 | 5.4% |
| Suspicious Person | 2713 | 3224 | 3046 | 511 | 18.8% | 178 | 5.8% | 14549 | 15106 | 14485 | 557 | 3.8% | 621 | 4.3% |
| Threats | 715 | 676 | 692 | -39 | -5.5% | -16 | -2.3% | 3036 | 2873 | 2936 | -163 | -5.4% | -63 | -2.1% |
| Unwanted Guest | 2321 | 3255 | 2098 | 934 | 40.2% | 1157 | 55.1% | 8873 | 11826 | 8674 | 2953 | 33.3% | 3152 | 36.3% |
| TOTAL SOCIAL DISORDER | 14725 | 16917 | 15168 | 2192 | 14.9% | 1749 | 11.5% | 73302 | 76491 | 71048 | 3189 | 4.4% | 5443 | 7.7% |
| PHYSICAL DISORDER | | | | | | | | | | | | | | |
| Abandoned Auto | 84 | 120 | 100 | 36 | 42.9% | 20 | 19.8% | 296 | 359 | 353 | 63 | 21.3% | 6 | 1.8% |
| Fire | 407 | 465 | 489 | 58 | 14.3% | -24 | -4.9% | 2048 | 2028 | 2166 | -20 | -1.0% | -138 | -6.4% |
| Property Damage* | 1364 | 1379 | 1666 | 15 | 1.1% | -287 | -17.2% | 6836 | 5808 | 7675 | -1028 | -15.0% | -1867 | -24.3% |
| TOTAL PHYSICAL DISORDER | 1855 | 1964 | 2255 | 109 | 5.9% | -291 | -12.9% | 9180 | 8195 | 10194 | -985 | -10.7% | -1999 | -19.6% |
| TOTAL DISORDER | 16580 | 18881 | 17423 | 2301 | 13.9% | 1458 | 8.4% | 82482 | 84686 | 81242 | 2204 | 2.7% | 3444 | 4.2% |

Public Generated Disorder Calls for Service
YTD Jan 01 to Dec 31 2013



***Data Notes:**

- 1) Dispatched, Advised, Call Back and Web Calls are included.
- 2) 689 calls in current quarter were reported at district front counters (walkins) and are excluded from this dataset.
- 3) Current Quarter: In addition to the 18,881 public generated calls, officers proactively generated 3,911 calls (these are not included in this report).
- 4) *The majority of Property Damage calls result in criminal code reports which are counted under Other Property Crimes in this report.



Domestic-Related Statistics - Static Numbers

The static crime numbers in this page are derived from historical Calgary Police Service statistical reports. These statistics are used in order to make a fair comparison using data which has not been allowed to increase due to late reporting of crime. Using static numbers allows us to compare crime levels at a specific point in time and make an accurate determination of increases or decreases.

4TH QUARTER 2013

| | 4th Quarter Number Of Offences | | | | Year to Date Number of Offences | | | |
|-------------------------------------|-----------------------------------|-------------|--------------------------|----------------------|------------------------------------|-------------|--------------------------|----------------------|
| | 2012 | 2013 | 5yr Avge (2008to2012) | % Change (5 Year) | 2012 | 2013 | 5yr Avge (2008to2012) | % Change (5 Year) |
| DOMESTIC CRIMES | | | | | | | | |
| PERSON CRIMES | | | | | | | | |
| <i>Homicide</i> | 2 | 1 | 1.7 | -40.0% | 2 | 7 | 3.8 | 82.6% |
| <i>Other Offences Causing Death</i> | 0 | 0 | 0.0 | 0.0% | 0 | 0 | 0.0 | N/A |
| <i>Attempted Homicide</i> | 1 | 0 | 1.2 | -100.0% | 2 | 3 | 2.0 | 50.0% |
| <i>Sex Offences</i> | 46 | 42 | 40.4 | 4.0% | 170 | 135 | 132.3 | 2.0% |
| <i>Robbery</i> | 3 | 0 | 2.8 | -100.0% | 4 | 2 | 8.5 | -76.5% |
| <i>Assault</i> | 522 | 521 | 558.0 | -6.6% | 2151 | 2151 | 2296.7 | -6.3% |
| <i>Miscellaneous¹</i> | 59 | 52 | 62.5 | -16.8% | 244 | 188 | 248.2 | -24.2% |
| TOTAL PERSON CRIMES | 633 | 616 | 666.5 | -8.9% | 2573 | 2486 | 2691.5 | -9.0% |
| PROPERTY CRIMES | | | | | | | | |
| <i>Break & Enter</i> | 28 | 23 | 31.5 | -27.0% | 125 | 120 | 145.0 | -17.2% |
| <i>Theft</i> | 62 | 49 | 79.2 | -38.1% | 231 | 246 | 318.3 | -22.7% |
| <i>Fraud</i> | 32 | 14 | 21.3 | -34.4% | 82 | 63 | 78.3 | -19.6% |
| <i>Other Property</i> | 147 | 123 | 132.5 | -7.2% | 531 | 491 | 532.2 | -7.7% |
| TOTAL PROPERTY CRIMES | 269 | 209 | 931.0 | -24.2% | 969 | 920 | 1073.8 | -16.7% |
| TOTAL OTHER CC² | 284 | 246 | 313.7 | -21.6% | 1180 | 1091 | 1343.3 | -18.8% |
| TOTAL DOMESTIC INCIDENTS | 1186 | 1071 | 1911.2 | -16.3% | 4722 | 4497 | 5108.7 | -14.0% |

Source: Static Data (PIMS: January 2009 - January 2014)

Unit of Count: incident (property crime and other criminal code), victim (person crimes)

| | 4th Quarter Number of Incidents | | | | Year to Date Number of Incidents | | | |
|-----------------------------|------------------------------------|-------------|--------------------------|----------------------|-------------------------------------|--------------|--------------------------|----------------------|
| | 2012 | 2013 | 5yr Avge (2008to2012) | % Change (5 Year) | 2012 | 2013 | 5yr Avge (2008to2012) | % Change (5 Year) |
| DOMESTIC INCIDENTS | | | | | | | | |
| Domestic Information | 3174 | 3203 | 2978.2 | 7.5% | 12667 | 13120 | 11969.3 | 9.6% |
| Domestic Standby | 210 | 184 | 176.2 | 4.4% | 876 | 886 | 785.8 | 12.7% |
| TOTAL | 3384 | 3387 | 3107.8 | 9.0% | 13543 | 14006 | 12505.0 | 12.0% |

Source: Static Data (PIMS: January 2009 - January 2014)

Homicide statistics includes: 1st degree homicide, 2nd degree homicide, manslaughter and infanticide. Other offences causing death include criminal negligence. Attempted homicide includes: attempted murder and conspiracy to commit.

¹ Miscellaneous person crime consists of: kidnapping/abduction, forcible confinement, extortion, criminal harassment, indecent/harrassing calls

² Other CC offences mainly consist of: uttering threats and failing to comply with court orders



Youth-Related Statistics - Static Numbers

The static crime numbers in this page are derived from historical Calgary Police Service statistical reports. These statistics are used in order to make a fair comparison using data which has not been allowed to increase due to late reporting of crime. Using static numbers allows us to compare crime levels at a specific point in time and make an accurate determination of increases or decreases.

| 4TH QUARTER 2013 | | | | | | | | |
|------------------------------------|------------------------------------|------------|-------------------------|----------------------|-------------------------------------|-------------|-------------------------|----------------------|
| | 4th Quarter Number of Offenders | | | | Year to Date Number of Offenders | | | |
| | 2012 | 2013 | 5yr Ave (2008to2012) | % Change (5 Year) | 2012 | 2013 | 5yr Ave (2008to2012) | % Change (5 Year) |
| | YOUTH OFFENDERS | | | | | | | |
| PERSON CRIMES | | | | | | | | |
| Homicide | 0 | 0 | 0.4 | N/A | 0 | 1 | 0.4 | 150.0% |
| Other Offences Causing Death | 0 | 0 | 0.0 | N/A | 0 | 0 | 0.0 | N/A |
| Attempted Homicide | 0 | 0 | 0.4 | N/A | 0 | 0 | 0.6 | N/A |
| Sex Offences | 5 | 0 | 4.6 | -100.0% | 18 | 13 | 18.4 | -29.3% |
| Robbery | 23 | 17 | 26.8 | -36.6% | 83 | 53 | 106.2 | -50.1% |
| Assault | 92 | 84 | 119.6 | -29.8% | 403 | 337 | 490.4 | -31.3% |
| Miscellaneous | 3 | 5 | 5.0 | 0.0% | 10 | 16 | 14.2 | 12.7% |
| TOTAL YOUTH PERSON CRIMES | 123 | 106 | 156.8 | -32.4% | 514 | 420 | 630.2 | -33.4% |
| PROPERTY CRIMES | | | | | | | | |
| Break & Enter | 25 | 5 | 31.8 | -84.3% | 141 | 45 | 135.2 | -66.7% |
| Theft | 224 | 161 | 343.8 | -53.2% | 1016 | 759 | 1473.8 | -48.5% |
| Fraud | 7 | 7 | 11.0 | -36.4% | 21 | 16 | 41.4 | -61.4% |
| Other Property | 57 | 48 | 65.8 | -27.1% | 262 | 160 | 280.2 | -42.9% |
| TOTAL YOUTH PROPERTY CRIMES | 313 | 221 | 452.4 | -51.1% | 1440 | 980 | 1930.6 | -49.2% |
| OTHER CRIMES | | | | | | | | |
| Other CC ¹ | 78 | 82 | 130.2 | -37.0% | 404 | 340 | 514.0 | -33.9% |
| CC Traffic | 4 | 5 | 5.0 | 0.0% | 17 | 15 | 18.0 | -16.7% |
| Drugs | 59 | 52 | 60.4 | -13.9% | 228 | 198 | 231.0 | -14.3% |
| YCJA | 35 | 23 | 36.4 | -36.8% | 171 | 118 | 160.4 | -26.4% |
| TOTAL YOUTH OTHER CRIMES | 176 | 162 | 232.0 | -30.2% | 820 | 671 | 923.4 | -27.3% |
| TOTAL YOUTH CRIMES | 612 | 489 | 841.2 | -41.9% | 2774 | 2071 | 3484.2 | -40.6% |

Source: Static Data (PIMS: January 2014)

Unit of Count: Most serious violation per accused. Calculations are based on offences cleared. Youth offenders are between the ages of 12 and 17 years.

| YOUTH VICTIMS | | | | | | | | |
|-------------------------------------|------------------------------------|------------|-------------------------|----------------------|-------------------------------------|-------------|-------------------------|----------------------|
| | 4th Quarter Number of Offenders | | | | Year to Date Number of Offenders | | | |
| | 2012 | 2013 | 5yr Ave (2008to2012) | % Change (5 Year) | 2012 | 2013 | 5yr Ave (2008to2012) | % Change (5 Year) |
| | YOUTH VICTIMS | | | | | | | |
| PERSON CRIMES | | | | | | | | |
| Homicide | 1 | 0 | 0.4 | N/A | 1 | 1 | 2.0 | -50.0% |
| Other Offences Causing Death | 0 | 0 | 0.0 | N/A | 0 | 0 | 0.0 | N/A |
| Attempted Homicide | 0 | 0 | 0.2 | N/A | 0 | 0 | 1.4 | N/A |
| Sex Offences | 60 | 37 | 56.4 | -34.4% | 250 | 321 | 233.0 | 37.8% |
| Robbery | 48 | 29 | 58.4 | -50.3% | 199 | 138 | 235.4 | -41.4% |
| Assault | 132 | 117 | 160.4 | -27.1% | 576 | 573 | 656.6 | -12.7% |
| Miscellaneous | 17 | 7 | 12.0 | -41.7% | 64 | 50 | 55.6 | -10.1% |
| TOTAL YOUTH PERSON VICTIMS | 258 | 190 | 287.8 | -34.0% | 1090 | 1083 | 1184.0 | -8.5% |
| PROPERTY CRIMES | | | | | | | | |
| Break & Enter | 13 | 25 | 13.0 | 92.3% | 64 | 84 | 50.6 | 66.0% |
| Theft | 145 | 160 | 151.4 | 5.7% | 618 | 620 | 593.0 | 4.6% |
| Fraud | 8 | 5 | 4.0 | 25.0% | 20 | 21 | 11.6 | 81.0% |
| Other Property | 6 | 19 | 12.6 | 50.8% | 43 | 58 | 54.6 | 6.2% |
| TOTAL YOUTH PROPERTY VICTIMS | 172 | 209 | 181.0 | 15.5% | 745 | 783 | 709.8 | 10.3% |
| OTHER CRIMES | | | | | | | | |
| Other CC ¹ | 43 | 25 | 40.8 | -38.7% | 129 | 134 | 149.6 | -10.4% |
| CC Traffic | 2 | 1 | 1.4 | -28.6% | 4 | 1 | 7.0 | -85.7% |
| Drugs | 0 | 0 | 0.0 | 0.0% | 0 | 0 | 0.0 | 0.0% |
| Youth Criminal Justice Act (YCJA) | 0 | 0 | 0.0 | 0.0% | 0 | 0 | 0.0 | 0.0% |
| TOTAL YOUTH OTHER VICTIMS | 45 | 26 | 42.2 | -38.4% | 133 | 135 | 156.6 | -13.8% |
| TOTAL YOUTH VICTIMS | 475 | 425 | 511.0 | -16.8% | 1968 | 2001 | 2050.4 | -2.4% |

Source: Static Data (PIMS: January 2014)

Unit of Count: Most Serious Violation per Victim. Youth victims are victims aged 0 to 17 years.

¹ Other CC includes offences in categories of miscellaneous Criminal Code, explosives/w/ weapons, vice and gaming-related offences.