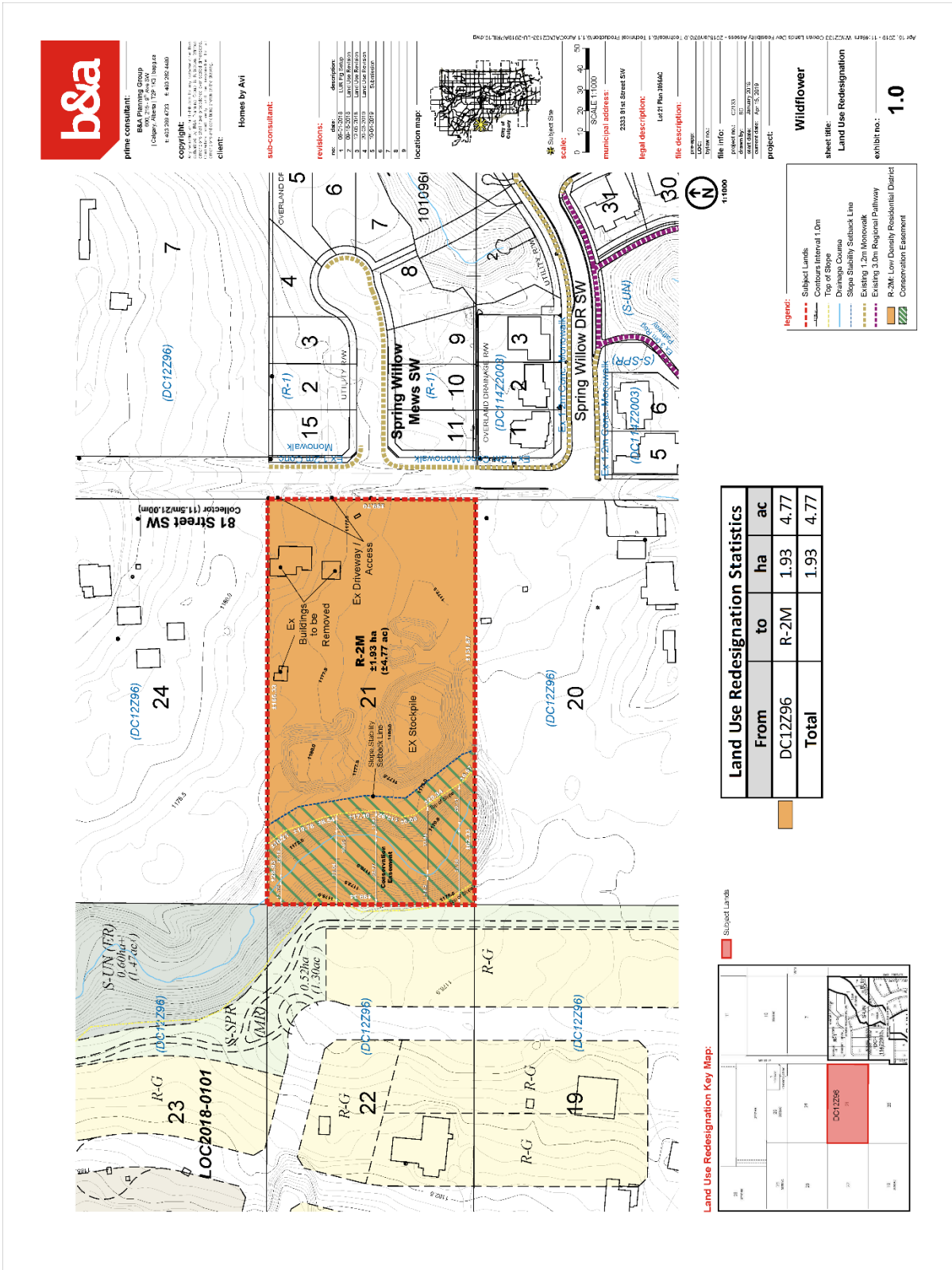


Land Use Plan



prime consultant:
B&A Planning Group
1 Calgary Avenue 15th Floor
Calgary, Alberta T2P 1K3 Canada
T: 403.291.4232 F: 403.292.4480

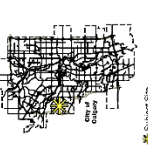
copyright:
© 2019 B&A Planning Group

client:
Homes by Avi

sub-consultant:

- revisions:**
- | NO. | DATE | DESCRIPTION |
|-----|------------|------------------|
| 1 | 2019-07-15 | ISSUE FOR PERMIT |
| 2 | 2019-07-20 | LAND USE DESIGN |
| 3 | 2019-07-25 | LAND USE DESIGN |
| 4 | 2019-08-01 | LAND USE DESIGN |
| 5 | 2019-08-05 | LAND USE DESIGN |
| 6 | 2019-08-10 | LAND USE DESIGN |
| 7 | 2019-08-15 | LAND USE DESIGN |
| 8 | 2019-08-20 | LAND USE DESIGN |
| 9 | 2019-08-25 | LAND USE DESIGN |
| 10 | 2019-09-01 | LAND USE DESIGN |
| 11 | 2019-09-05 | LAND USE DESIGN |
| 12 | 2019-09-10 | LAND USE DESIGN |
| 13 | 2019-09-15 | LAND USE DESIGN |
| 14 | 2019-09-20 | LAND USE DESIGN |
| 15 | 2019-09-25 | LAND USE DESIGN |
| 16 | 2019-10-01 | LAND USE DESIGN |
| 17 | 2019-10-05 | LAND USE DESIGN |
| 18 | 2019-10-10 | LAND USE DESIGN |
| 19 | 2019-10-15 | LAND USE DESIGN |
| 20 | 2019-10-20 | LAND USE DESIGN |
| 21 | 2019-10-25 | LAND USE DESIGN |
| 22 | 2019-11-01 | LAND USE DESIGN |
| 23 | 2019-11-05 | LAND USE DESIGN |
| 24 | 2019-11-10 | LAND USE DESIGN |
| 25 | 2019-11-15 | LAND USE DESIGN |
| 26 | 2019-11-20 | LAND USE DESIGN |
| 27 | 2019-11-25 | LAND USE DESIGN |
| 28 | 2019-12-01 | LAND USE DESIGN |
| 29 | 2019-12-05 | LAND USE DESIGN |
| 30 | 2019-12-10 | LAND USE DESIGN |
| 31 | 2019-12-15 | LAND USE DESIGN |
| 32 | 2019-12-20 | LAND USE DESIGN |
| 33 | 2019-12-25 | LAND USE DESIGN |
| 34 | 2020-01-01 | LAND USE DESIGN |

location map:



SCALE:
0 10 20 30 40 50
SCALES: 1:1000

MUNICIPAL ADDRESS:
2333 81st Street SW

LEGAL DESCRIPTION:
Lot 21 Plan 2956AC

FILE DESCRIPTION:

PROJECT:
Wildflower
Land Use Redesignation

sheet title:
Land Use Redesignation

exhibit no.:
1.0

- Legend:**
- Subject Lands
 - Contours Interval 1.0m
 - Top of Slope
 - Drainage Course
 - Slope Stability Subback Line
 - Existing 1.2m Monowalk
 - Existing 3.0m Regional Pathway
 - R-2M Low Density Residential District
 - Conservation Easement

Land Use Redesignation Statistics

From	to	ha	ac
DC12Z96	R-2M	1.93	4.77
Total		1.93	4.77

