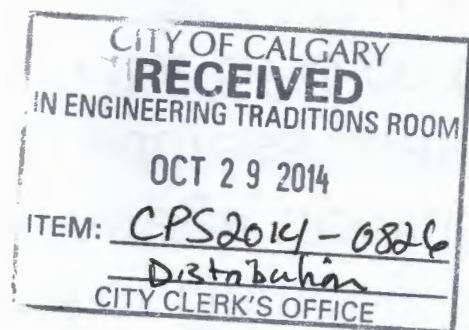


Addressing Operating Challenges with Bottle Depots

CPS2014-0826

City Wide Planning Functions



2014 October 29

Helpful, Equitable, Accurate, Responsive. This is our Customer Promise.

Onward/ We will promote site and building design that contributes to high-quality living environments and attractive, walkable, diverse neighborhoods and communities.

calgary.ca | call 3-1-1

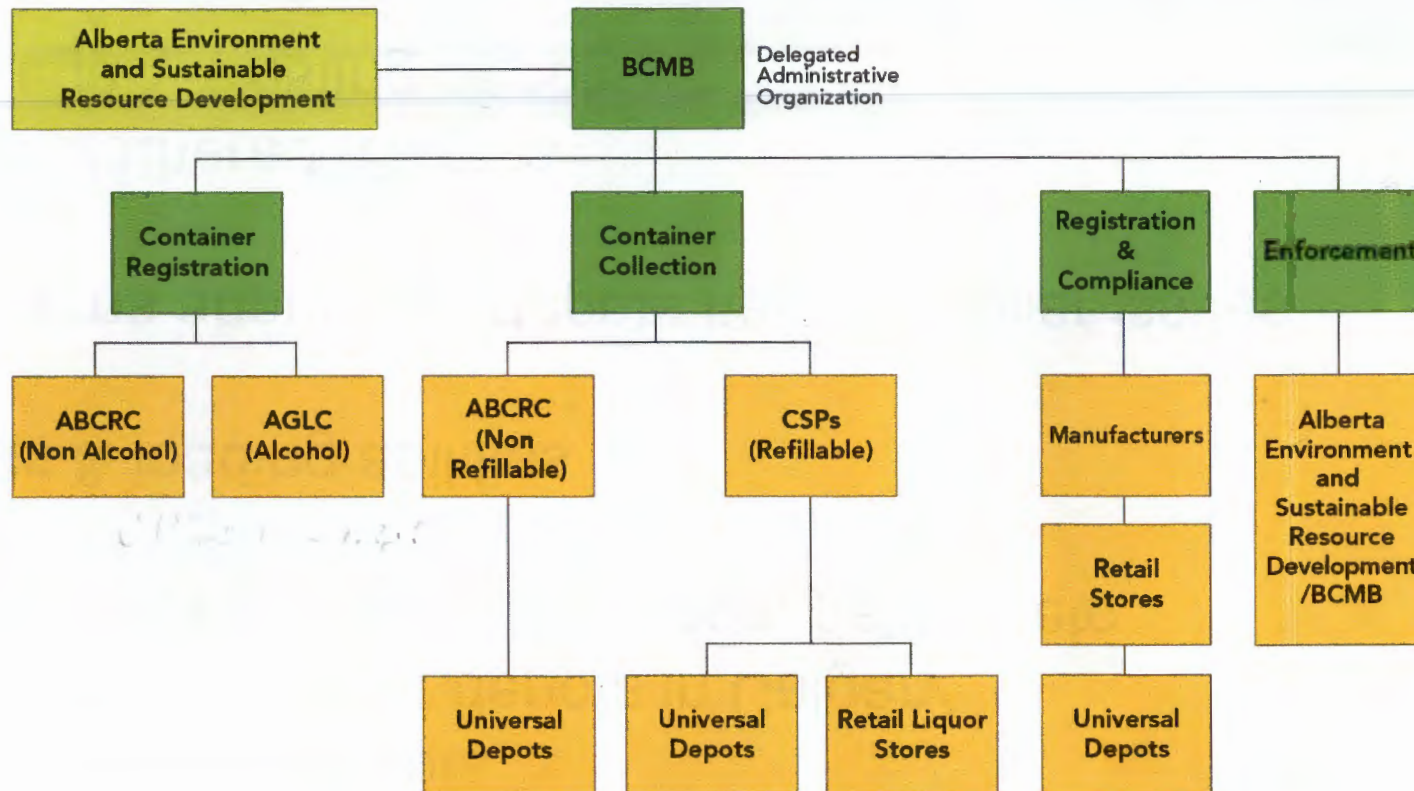


THE CITY OF
CALGARY
DEVELOPMENT &
BUILDING APPROVALS

Direction

At the 2014 May 26 Regular Meeting of Council, a motion arising was Moved by Councillor Pootmans, Seconded by Councillor Demong, which directed Administration to work with the Beverage Container Management Board (BCMB) on how best to address operating challenges, and return to Council through the SPC on Community and Protective Services, no later than 2014 December 10.

Background



BCMB = Beverage Container Management Board
 ABCRC = Alberta Beverage Container Recycling Corporation
 AGLC = Alberta Gaming & Liquor Commission
 CSP = Collection Service Provider

Issues

- Over-capacity depots
 - Under-supply of depots in Calgary
 - Outdoor Storage – Garbage, pallets, etc
- Carts & loading abilities
- Concerns about new depots having similar issues
- “Grandfathered” Depots
 - Legally existing depots

Solutions

- Administration has been working with the BCMB and individual depots

The BCMB has committed to dealing with operating issues of all Calgary depots, existing and new.

- Inspections
- Written notices
- Warning
- Supplementary visits

Land Use Bylaw Amendments

1. Amend the current definition of “Beverage Container Drop-Off Depot”
2. Add the use to additional districts and change the use from discretionary to a permitted use within existing buildings in C-COR3 and C-R3
3. Create a new use “Beverage Container Quick Drop Facility”

Recommendations

That the SPC on Community and Protective Services recommend that council receive this report for information.