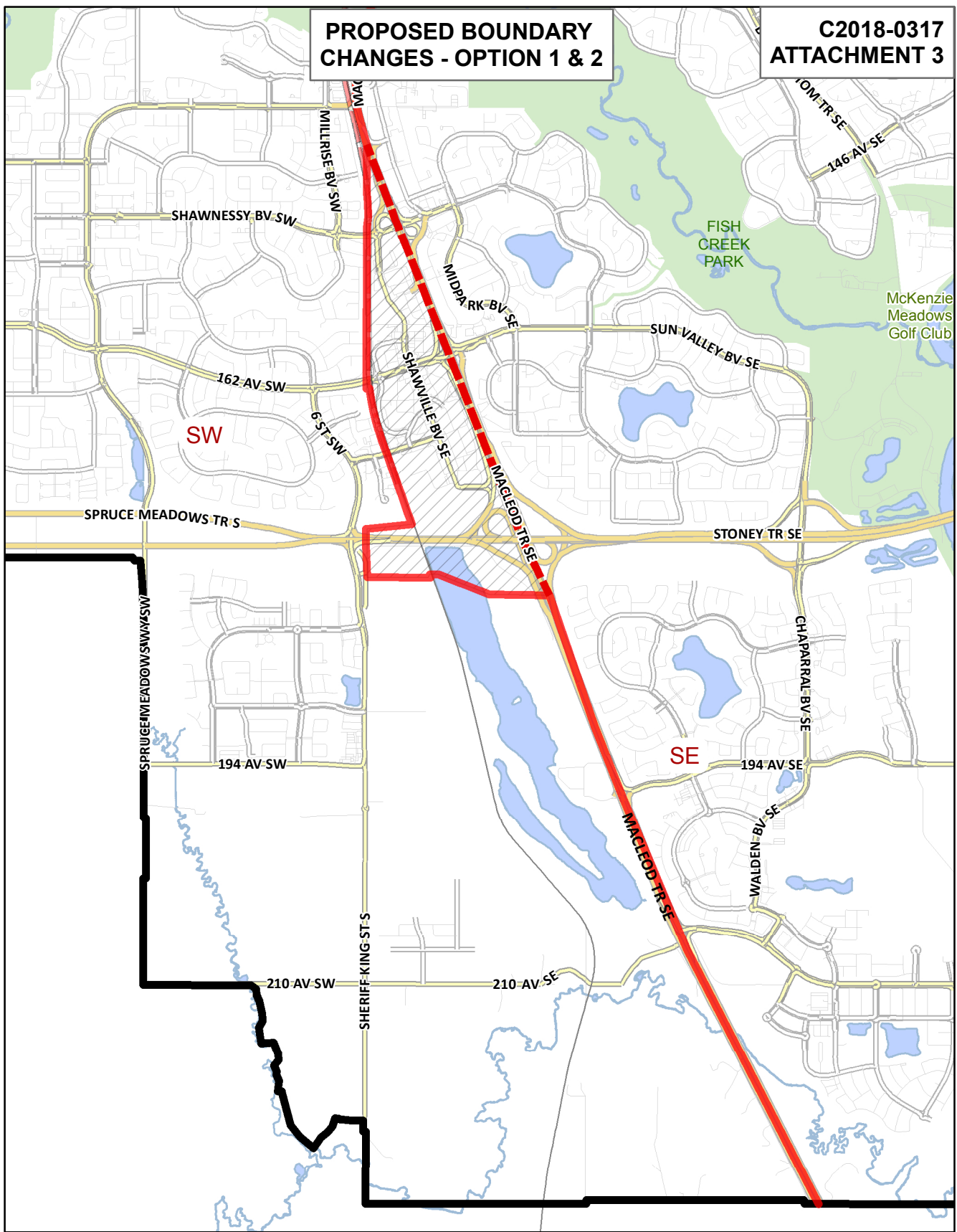


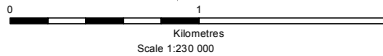
PROPOSED BOUNDARY CHANGES - OPTION 1 & 2

C2018-0317 ATTACHMENT 3



- Proposed Quadrant Alignment
- - - Potential - McLeod Tr Alignment
- Recommended Area for Inclusion
- City Limit

as of 2018 FEBRUARY 28



COPYRIGHT © 2017 The City of Calgary
 All rights reserved. No parts of this map may be reproduced in any form or by any means without the written consent of The City of Calgary and appropriate licence agreement. The City of Calgary provides this information in good faith, but provides no warranty nor accepts any liability arising from incorrect, incomplete or misleading information or its improper use. This information is maintained on a regular basis.

Corporate Analytics & Innovation

Projection: 3TM 114° WGS84
 Data: The City of Calgary