

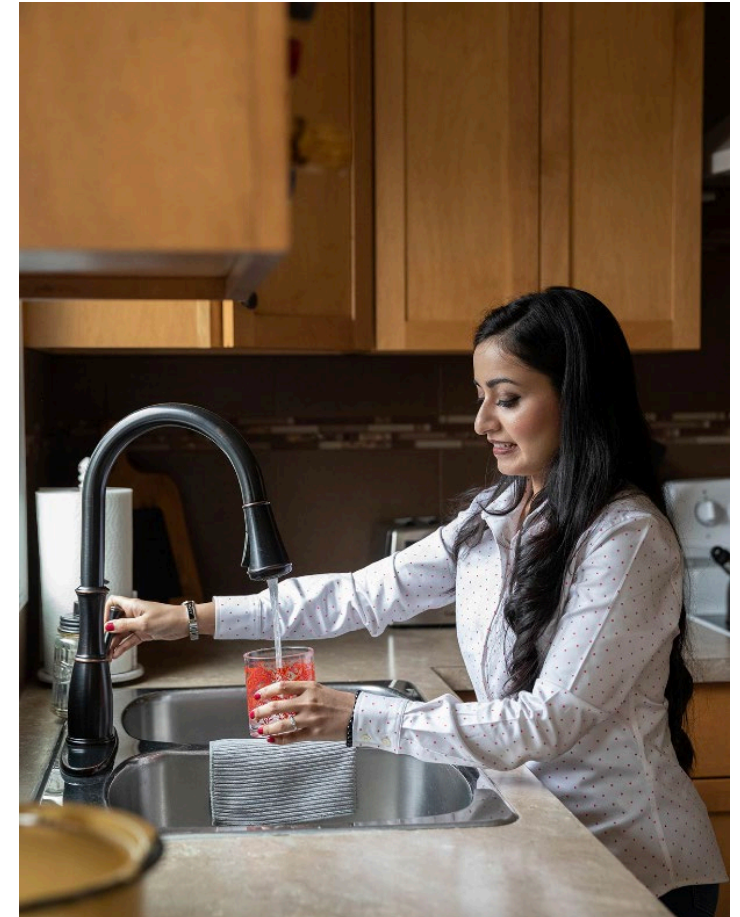


Service Name	Service Director	General Manager
<b>Bylaw Education &amp; Compliance</b>	Iain Bushell	Katie Black
<b>Calgary 9-1-1</b> • Increasing 9-1-1 capacity to dispatch Transit Peace Officers for emergency calls	Iain Bushell	
<b>Emergency Management &amp; Business Continuity</b>	Iain Bushell	
<b>Fire &amp; Emergency Response</b> • Aligning emergency response capabilities to meet rising service demand	Steve Dongworth	
<b>Fire Inspection &amp; Enforcement</b>	Steve Dongworth	
<b>Fire Safety Education</b>	Steve Dongworth	
<b>Pet Ownership &amp; Licensing</b>	Iain Bushell	





Service Name	Service Director	General Manager
<b>Climate &amp; Environmental Management</b> <ul style="list-style-type: none"> <li>Clean Energy Improvement Program</li> </ul>	Carolyn Bowen	Debra Hamilton
<b>Stormwater Management</b> <ul style="list-style-type: none"> <li>Drainage Facilities &amp; Network (Program 897)</li> </ul>	Nancy Mackay	Doug Morgan
<b>Urban Forestry</b> <ul style="list-style-type: none"> <li>Sustain tree service levels in response to significant grant to increase the urban canopy</li> </ul>	Kyle Ripley	
<b>Waste &amp; Recycling</b> <ul style="list-style-type: none"> <li>Waste &amp; Recycling Services (Program 256 – Landfill/Treatment Infrastructure)</li> <li>Waste &amp; Recycling Services (Program 258 – Facilities &amp; Equipment)</li> </ul>	Julie Radke	
<b>Wastewater Collection &amp; Treatment</b> <ul style="list-style-type: none"> <li>Wastewater Treatment Plants (Program 894)</li> <li>Wastewater Collection Network (Program 895)</li> </ul>	Nancy Mackay	
<b>Water Treatment &amp; Supply</b> <ul style="list-style-type: none"> <li>Water Treatment Plant (Program 891)</li> <li>Water Distribution Network (Program 892)</li> </ul>	Nancy Mackay	



Service Name	Service Director	General Manager
<b>Social Programs and Services</b>		
<b>Affordable Housing</b>	Jeff Chase	Katie Black
<b>Community Strategies</b> <ul style="list-style-type: none"> <li>Continuing to fund The City's Equity Program to advance equitable delivery of City services</li> <li>Implementing the recommendations from the Downtown Safety Leadership Table</li> </ul>	Erendira Cervantes-Altamirano	
<b>Neighbourhood Support</b>	Erendira Cervantes-Altamirano	
<b>Social Programs</b>	Heather Johnson	
<b>Parks, Recreation and Culture</b>		
<b>Arts &amp; Culture</b> <ul style="list-style-type: none"> <li>Film Friendly Program Sustainment</li> </ul>	Kay Choi	Katie Black
<b>City Cemeteries</b>	Kyle Ripley	Doug Morgan
<b>Library Services</b>	Kay Choi	Katie Black
<b>Parks &amp; Open Spaces</b> <ul style="list-style-type: none"> <li>Playground and Amenity Safety Inspections and Sustainment</li> <li>Cowboys Park Capital Upgrade</li> </ul>	Kyle Ripley	Doug Morgan
<b>Recreation Opportunities</b>	Heather Johnson	Katie Black

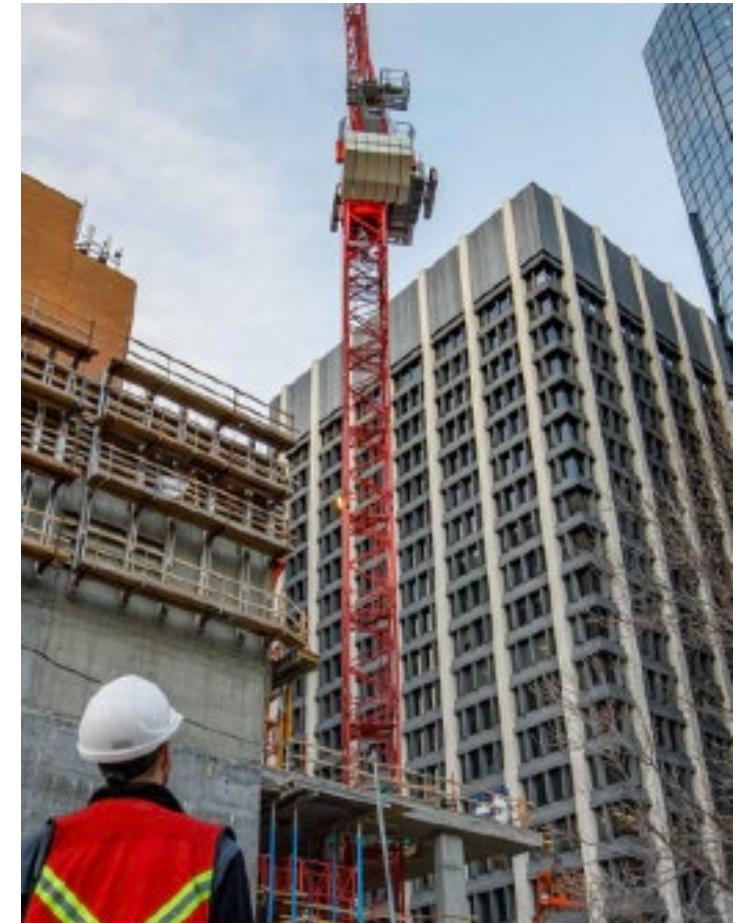




Service Name	Service Director	General Manager
<b>Parking</b>	Troy McLeod	Doug Morgan
<b>Public Transit</b> <ul style="list-style-type: none"> <li>Preparing for Green Line Operations</li> <li>Public Transit Revenue Shortfall</li> <li>Low Income Transit Pass Program Sustainment</li> <li>Belvedere related Infrastructure including design for Max Purple</li> <li>Blue Line – Additional Design and early works</li> </ul>	Sharon Fleming	
<b>Sidewalks &amp; Pathways</b> <ul style="list-style-type: none"> <li>Additional 5A Network Improvement</li> <li>Timber Stair Replacement Program</li> <li>Public realm investments in Established Areas</li> </ul>	Troy McLeod	
<b>Specialized Transit</b> <ul style="list-style-type: none"> <li>Eligibility Resources for Calgary Transit Access</li> </ul>	Sharon Fleming	
<b>Streets</b> <ul style="list-style-type: none"> <li>Improving Pavement Quality and the 5A Network</li> <li>Beaverdam Flats Slope Stability Project</li> <li>MacEwan Park View NW Slope Project</li> <li>Enmax High Risk Task Transformer Relay Replacement</li> <li>Retaining Wall Replacement Program</li> <li>Improving Pavement Quality on High-Speed Roads</li> <li>Country Hills Widening (Barlow Tr to 36 St SE)</li> <li>Belvedere related Infrastructure including a Stoney/Memorial flyover</li> </ul>	Troy McLeod	
<b>Taxi, Limousine &amp; Vehicles-for-Hire</b>	Iain Bushell	Katie Black



Service Name	Service Director	General Manager
Appeals & Tribunals	Kate Martin	Jill Floen
Building Safety	Brenda Desjardins	
Business Licensing	Brenda Desjardins	
<b>City Planning &amp; Policy</b> <ul style="list-style-type: none"> <li>• A Data Foundation for City Building: Exploring a New Civic Census</li> <li>• Transit Oriented Design – Design &amp; Infrastructure Study</li> <li>• Prairiesong Growth Application Operating Costs</li> <li>• Belvedere (Liberty) Growth Application Operating Costs</li> <li>• Hotchkiss Growth Application Operating Costs</li> </ul>	Kathy Davies Murphy	
<b>Development Approvals</b> <ul style="list-style-type: none"> <li>• Rezoning for Housing Resources</li> </ul>	Teresa Goldstein	
<b>Economic Development &amp; Tourism</b>	Kay Choi	Katie Black
<b>Land Development &amp; Sales</b> <ul style="list-style-type: none"> <li>• City-Wide Transit Oriented Development</li> </ul>	Campbell Berry	Michael Thompson
<b>Real Estate</b>	Campbell Berry	





Service Name	Service Director	General Manager
<b>Tax and Property Assessment</b>		
Property Assessment	Eddie Lee	Les Tochor (Acting)
Taxation	Eddie Lee	
<b>Information and Communication</b>		
Citizen Engagement & Insights	Jennifer McMurtry	Chris Arthurs
Citizen Information & Services	Jennifer McMurtry	
Records Management, Access & Privacy	Kate Martin	Jill Floen
Strategic Marketing & Communications	Jennifer McMurtry	Chris Arthurs





Service Name	Service Director	General Manager
<b>Corporate Governance</b>	Paul G. Taylor	Chris Arthurs
<b>Corporate Security</b>	Michael Tillotson	Jill Floen
<b>Council &amp; Committee Support</b> • Policy framework for the Remuneration and reimbursement of Expenses for Boards, Commissions and Committees	Kate Martin	
<b>Data, Analytics &amp; Information Access</b>	Rick Ciezki	Chris Arthurs
<b>Executive Leadership</b>	David Duckworth	David Duckworth
<b>Facility Management</b>	Ian Fleming	Doug Morgan
<b>Financial Support</b>	Les Tochor	Les Tochor (Acting)
<b>Fleet Management</b>	Majid Asefi	Doug Morgan
<b>Human Resource Support</b>	Greg Juliano	Chris Arthurs
<b>Infrastructure &amp; Engineering</b> • Bridge Management System • Plus 15 Program Management (Inspections) • Capital Cost Escalation Fund • Reinvesting In Our Annual Investment Programs	Ryan Vanderputten	Michael Thompson
<b>Insurance &amp; Claims</b>	Lynne Davies	Jill Floen
<b>IT Solutions &amp; Support</b>	Jan Bradley	Chris Arthurs
<b>Legal Services</b>	Lynne Davies	Jill Floen
<b>Municipal Elections</b> • Bill 20 - Local Authorities Election Act Changes for Municipal Elections	Kate Martin	
<b>Organizational Health, Safety &amp; Wellness</b>	Christopher Collier	Chris Arthurs
<b>Procurement &amp; Warehousing</b>	Amit Patil	Les Tochor (Acting)
<b>Common Revenue</b>		
<b>Corporate Costs &amp; Debt Servicing</b> • Corporate Inflationary Pressures		

